

Reach	Trap	Species	Lat	Long
1	4	Coho	61.29750342	-149.7083226
19	1	Coho	61.298824	-149.713565
36	3	Coho	61.29726746	-149.7106713
39	7	Coho	61.3060705	-149.6974711
48	1	Coho	61.305836	-149.685812
65	7	Coho	61.30867093	-149.687697
79	5	Coho	61.299566	-149.6959419
80	1	Coho	61.299182	-149.695491
84	3	Coho	61.29743576	-149.6990892
6	3	Chinook	61.29814026	-149.7030745
7	2	Chinook	61.2984095	-149.7016941
19	4	Chinook	61.29891898	-149.713174
51	1	Chinook	61.30601	-149.689504
79	5	Chinook	61.299566	-149.6959419
2	7	Sockeye	61.29719821	-149.7061885
8	1	Sockeye	61.297884	-149.700506
19	2	Sockeye	61.29882824	-149.7134062
36	9	Sockeye	61.29768083	-149.7109374
48	2	Sockeye	61.30593	-149.68585
65	2	Sockeye	61.3084289	-149.6867995
83	3	Sockeye	61.29765327	-149.6982795
1	4	DV	61.29750342	-149.7083226
7	2	DV	61.2984095	-149.7016941
14	10	DV	61.29940538	-149.7076357
34	8	DV	61.29879743	-149.7125895

Highest in AWC unit; 2 or more caught

Second highest in reach; single fish caught above

ANCHORAGE B-8

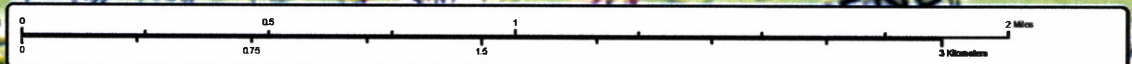
~ADD new species life-phase CHINOOK and SOCKEYE salmon REARING to existing AWC Stream #247-50-10110-2010 "Otter Creek".

-Please update using most recent .GDB with line, point, lake, polygon and barrier features located in O:\DSF\5\AWC\Draft2026\GIS\Data\AWC2026_WrkingV1_7April2025.gdb

****Important** Process Nom #25-629 first****

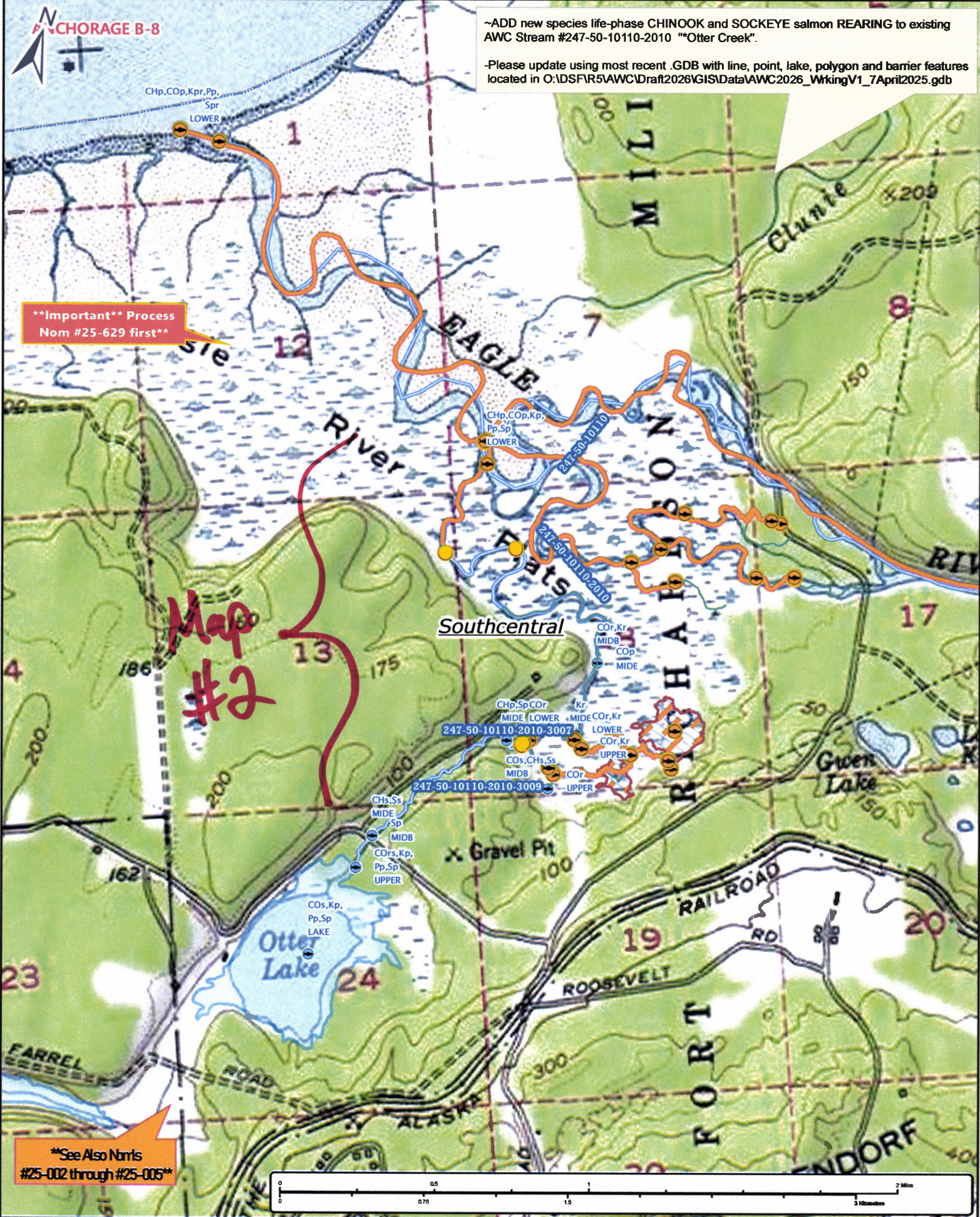
Map #2

****See Also NrrIs #25-002 through #25-005****



Nom #25-006

Map #1



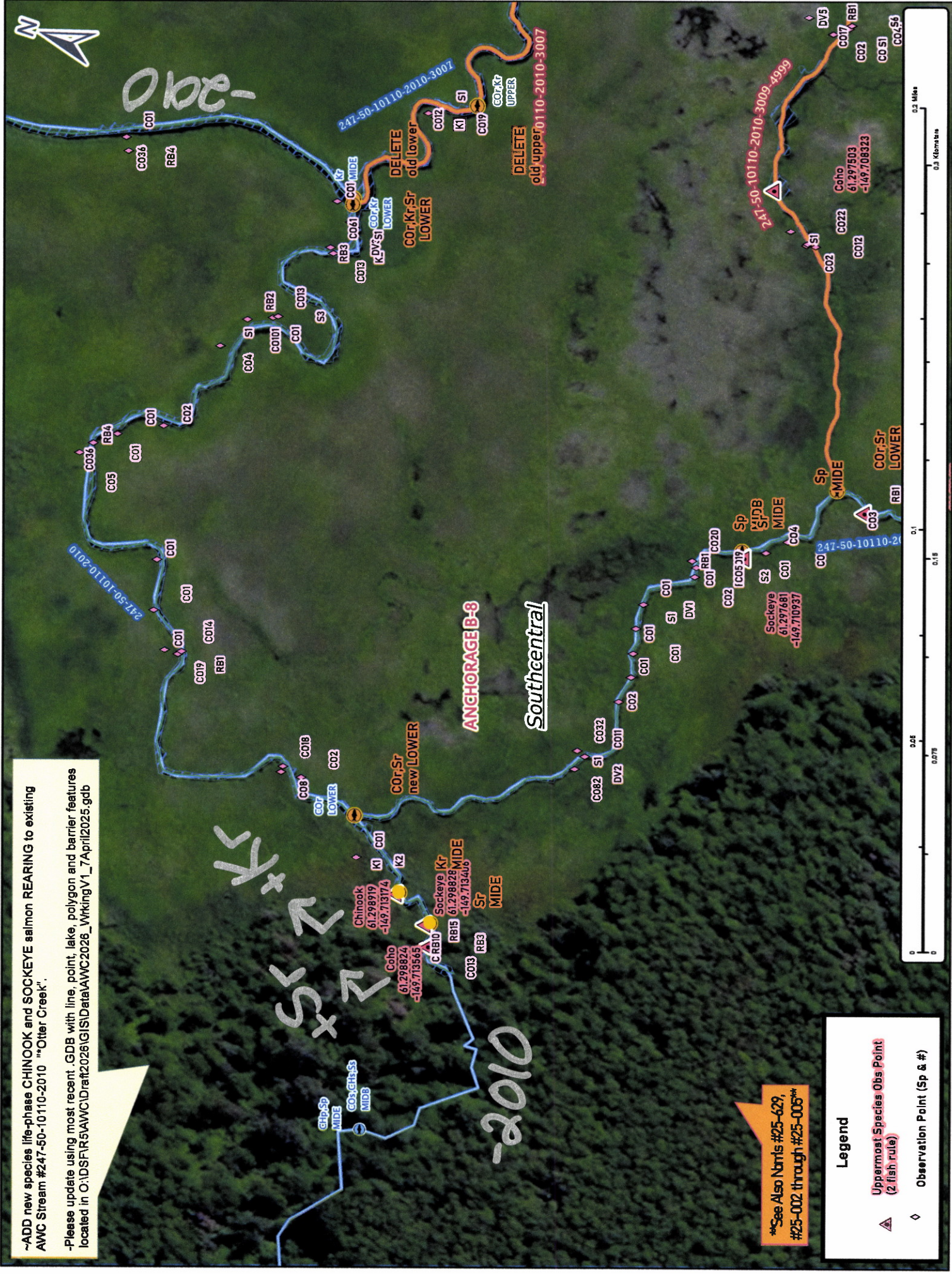
~ADD new species life-phase CHINOOK and SOCKEYE salmon REARING to existing AWC Stream #247-50-10110-2010 "Otter Creek".

-Please update using most recent .GDB with line, point, lake, polygon and barrier features located in O:\DS\FR5\AWC\Drat2026\GIS\Data\AWC2026_WrkingV1_7April2025.gdb

See Also Norris #25-629, #25-002 through #25-006

Legend

- ▲ Uppermost Species Obs Point (2 fish rule)
- ◆ Observation Point (Sp & #)



Map #3

Dom #25-006