



**State of Alaska  
Department of Fish and Game  
Sportfish Division**

**Nomination Form  
Anadromous Waters Catalog**

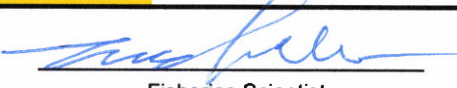
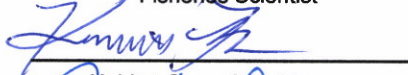
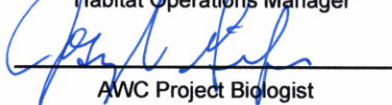

Region Southcentral USGS Quad(s) SEWARD D-8, D-7

Anadromous Waters Catalog Number of Water Body 247-60-10150 (-2025), (-2028)

Name of Water Body Resurrection Creek, Palmer Creek  USGS Name  Local Name

Addition  Deletion  Correction  Backup Information

**For Office Use**

Nomination #	<u>25-507</u>		<u>1/20/2026</u>
Revision Year:	<u>2026</u>	Fisheries Scientist	Date
Revision to:	<input checked="" type="checkbox"/> Atlas <input checked="" type="checkbox"/> Catalog		<u>1/9/26</u>
		Habitat Operations Manager	Date
Revision Code:	<u>C-9, B-1, F-1</u>		<u>29 Dec 2025</u>
		AWC Project Biologist	Date
			<u>1/22/2026</u>
		GIS Analyst	Date

**OBSERVATION INFORMATION**

Species	Date(s) Observed	Spawning	Rearing	Present	Anadromous
sockeye salmon	03/03/2021	✓	✓	✓	✓

**-UPDATE/ADJUST middle hydrography of existing AWC Stream #247-60-10150 "Resurrection Creek".**  
**-UPDATE/ADJUST hydrography of existing AWC Stream #247-60-10150-2025 "Palmer Creek".**  
**-UPDATE/ADJUST hydrography of existing AWC Stream #247-60-10150-2028.**  
**-ADD new species SOCKEYE salmon SPAWNING and PRESENT to existing AWC Stream #247-60-10150 "Resurrection Creek".**

**Comments:**

The USFS has been conducting streambank fish counts on Resurrection Creek starting in 2005. From 2005-2013 we counted 153 individual sockeye in Resurrection Creek over a 3 mile stretch. This data was collected in field notebooks and has very coarse georeferencing data. From 2020-2024 we used ESRI field maps for data collection, we counted 168 individual sockeye and mapped 4 sockeye redds. This set of data has better georeferencing. A 2007 smolt survey in the same area (exact locations would require further examination) caught 40 Sockeye smolt between 36mm and 57 mm in three off-channel habitat areas. Attached is a map of sockeye observed from 2020-2024, filtered survey data from the 2020-2024 surveys, and filtered smolt data from 2007.  
 Coordinates (Lat,Long): Upper(60.8498222,-149.6354308) Lower(60.921418,-149.645468)

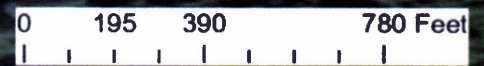
Name of Observer (please print): David Pearson  
 Signature: 10.231.39.10 (Web Nomination) Date: 11/13/2024  
 Agency: \_\_\_\_\_  
 Address: 33599 Ranger Station Spur  
Seward, AK 99664

This certifies that in my best professional judgment and belief the above information is evidence that this waterbody should be included in or deleted from the Anadromous Waters Catalog.

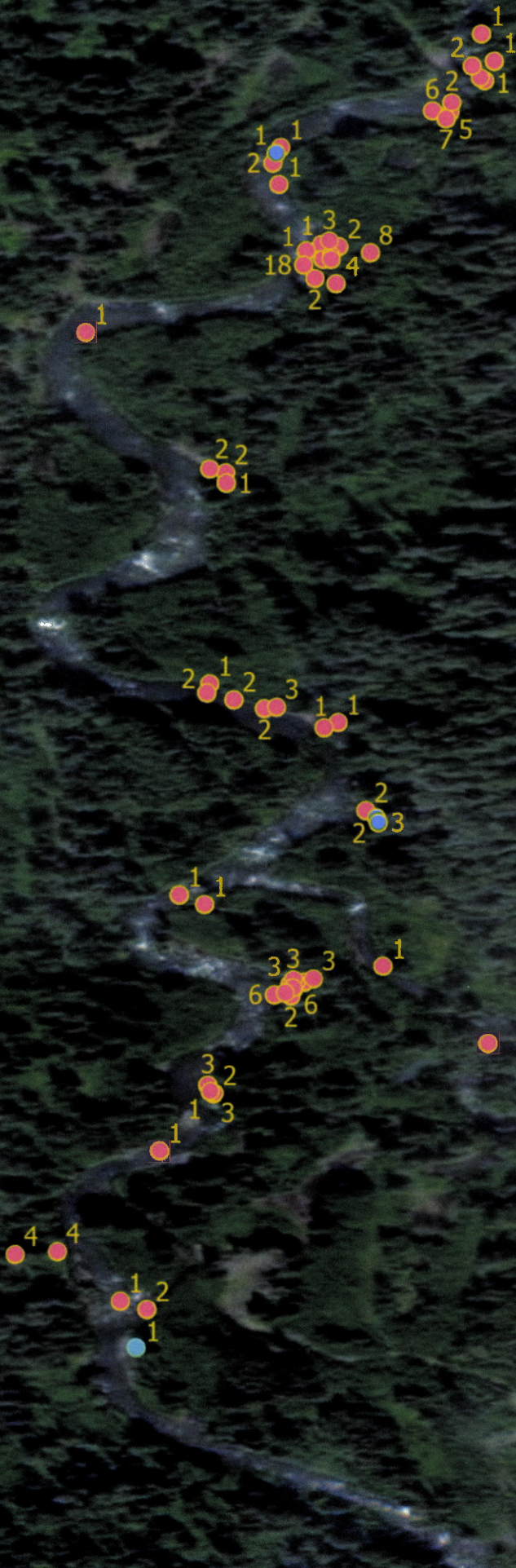
Signature of Area Biologist: \_\_\_\_\_ Date: \_\_\_\_\_ Revision 3/16  
 Name of Area Biologist (please print): \_\_\_\_\_

**\*\*Observations in this nomination also provide supporting information for juvenile Sockeye salmon rearing, however the data provided was collected in 2007 and does not meet the time frame necessary for AWC additions (observations made within the preceding 10 years). More contemporary observations are necessary to update the AWC.**

# Resurrection Creek, Hope AK



- Sockeye Redds
- Sockeye Counts



# Sockeye Surveys (adult) 2020-2024

What date and time	Is there an offset if so...	What Species	What are the fish doing	How many adults	How many redds	Notes	Long	Lat
08/05/2020 19:55:38.925	moved point on GPS	Sockeye	Holding	1	0		-149.6341032	60.85795123
07/26/2021 19:16:03	moved point on GPS	Sockeye	Holding	1	0		-149.6344035	60.85866624
07/26/2021 19:15:30	moved point on GPS	Sockeye	Holding	6	0		-149.6342942	60.8524553
08/02/2021 19:13:33	moved point on GPS	Sockeye	Holding	1	0		-149.6342151	60.85790228
08/02/2021 19:13:19	moved point on GPS	Sockeye	Holding	2	0		-149.6347994	60.8562603
08/02/2021 19:12:49	moved point on GPS	Sockeye	Holding	1	0		-149.6339746	60.85442504
08/02/2021 19:12:07	moved point on GPS	Sockeye	Holding	4	0		-149.6342151	60.85250919
08/02/2021 19:11:17	moved point on GPS	Sockeye	Holding	1	0		-149.6354308	60.84982221
8/9/2021 21:05	moved point on GPS	Sockeye	Holding	2			-149.6337702	60.85377461
8/9/2021 21:26	moved point on GPS	Sockeye	Holding	4			-149.6342741	60.85249842
8/9/2021 21:47	moved point on GPS	Sockeye	Spawning	4			-149.6360054	60.85052494
08/16/2021 19:06:50	moved point on GPS	Sockeye	Holding	2	0		-149.6339788	60.85793501
08/16/2021 19:05:11	moved point on GPS	Sockeye	Holding	6	0		-149.6344314	60.85241515
08/23/2021 19:02:52	moved point on GPS	Sockeye	Holding	1	0		-149.6329434	60.85950565
08/23/2021 19:02:38	moved point on GPS	Sockeye	Holding	8	0		-149.6337473	60.85789067
08/23/2021 19:02:23	moved point on GPS	Sockeye	Holding	2	0		-149.6349149	60.85628633
08/23/2021 18:38:10	moved point on GPS	Sockeye	Holding	3	0		-149.6343186	60.8524882
08/23/2021 18:37:35	moved point on GPS	Sockeye	Holding	1	0		-149.6355467	60.85016125
08/30/2021 19:29:03.483	moved point on GPS	Sockeye	Holding	1			-149.6328492	60.85930444
08/30/2021 19:49:34.848	moved point on GPS	Sockeye	Holding	4			-149.6339979	60.85766184
8/30/2021 21:03	moved point on GPS	Sockeye	Holding	2			-149.6347342	60.85458899
08/30/2021 21:21:33.228	moved point on GPS	Sockeye	Holding	1			-149.6351272	60.85314865
08/30/2021 21:33:40.370	moved point on GPS	Sockeye	Holding	3			-149.6341482	60.85253346
08/30/2021 21:41:05.494	moved point on GPS	Sockeye	Holding	3			-149.6348741	60.85168559
08/30/2021 21:54:24.556	moved point on GPS	Sockeye	Holding	2			-149.6353524	60.85010057
09/07/2021 21:31:18.834	moved point on GPS	Sockeye	Holding	1			-149.6352613	60.85126532
09/07/2021 21:36:14.245	moved point on GPS	Sockeye	Spawning	4			-149.6363135	60.85050324
9/8/2021 8:00	moved point on GPS	Sockeye	Holding	1		0 collected in Restored program instead of HMC	-149.6373624	60.89104726
9/8/2021 21:39	moved point on GPS	Sockeye	Holding	1		0 collected in Restored program instead of HMC	-149.6342236	60.88229714
09/08/2021 21:50:02.220	moved point on GPS	Sockeye	Holding	2		0 collected in Restored program instead of HMC	-149.6355859	60.88069845
09/14/2021 19:55:23.489	moved point on GPS	Sockeye	Holding	1			-149.6347948	60.85618285
9/14/2021 8:00	moved point on GPS	Sockeye	Spawning	2			-149.6348696	60.85169208
09/21/2021 22:17:08.093	moved point on GPS	Sockeye	Holding	1	0		-149.6336406	60.85262901
8/1/2022 22:41	moved point on GPS	Sockeye	Holding	2	0		-149.6344602	60.85855502
08/08/2022 19:48:57.761	moved point on GPS	Sockeye	Holding	1			-149.6329196	60.8591635
08/08/2022 19:58:16.348	moved point on GPS	Sockeye	Holding	5			-149.6331715	60.85893088
08/08/2022 20:19:27.915	moved point on GPS	Sockeye	Holding	4			-149.6340926	60.85784063
08/08/2022 21:00:02.671	moved point on GPS	Sockeye	Holding	2			-149.6345103	60.85452521
8/15/2022 19:46	moved point on GPS	Sockeye	Holding	6			-149.6332998	60.85894138
8/15/2022 20:14	moved point on GPS	Sockeye	Holding	18			-149.6342343	60.8577978
08/15/2022 20:33:59.108	moved point on GPS	Sockeye	Moving	1			-149.6358175	60.85729212
08/15/2022 21:46:24.998	moved point on GPS	Sockeye	Holding	3			-149.6342926	60.85252591
8/22/2022 19:10	moved point on GPS	Sockeye	Holding	7			-149.6331199	60.85888275
08/22/2022 19:30:41.613	moved point on GPS	Sockeye	Holding	2			-149.6341523	60.85769964
	moved point on GPS	Sockeye	Holding	2			-149.6343112	60.85240765
08/29/2022 20:13:50.133	moved point on GPS	Sockeye	Holding	5			-149.6340345	60.85786744
8/29/2022 20:56	moved point on GPS	Sockeye	Holding	3			-149.6344239	60.85453564
08/29/2022 21:29:16.900	moved point on GPS	Sockeye	Moving	1			-149.6349426	60.85307983
08/29/2022 21:48:15.541	moved point on GPS	Sockeye	Holding	1			-149.6342972	60.85246372
9/6/2022 18:37	moved point on GPS	Sockeye	Spawning	1			-149.6344163	60.85839421
9/6/2022 20:07	moved point on GPS	Sockeye	Holding	2	0		-149.6343531	60.85242772
9/12/2022 19:27	moved point on GPS	Sockeye	Holding	1			-149.6329507	60.8591832
9/12/2022 20:36	moved point on GPS	Sockeye	Holding	1			-149.634076	60.85438536
10/3/2022 21:34	moved point on GPS	Sockeye	Holding	1			-149.6349108	60.85470546
10/3/2022 22:08	moved point on GPS	Sockeye	Holding	2			-149.633158	60.85900156
8/22/2023 22:00	moved point on GPS	Sockeye	Holding	3			-149.6349154	60.8517503
8/22/2023 22:03	moved point on GPS	Sockeye	Holding	1			-149.6348969	60.85170332
8/31/2023 20:48	moved point on GPS	Sockeye	Holding	2			-149.6330098	60.85926851
8/31/2023 21:01	moved point on GPS	Sockeye	Spawning	3			-149.6340478	60.85797558
8/31/2023 21:41	moved point on GPS	Sockeye	Holding	2	1		-149.6336927	60.85372324
8/31/2023 22:34	moved point on GPS	Sockeye	Holding				-149.6328739	60.85206387
9/5/2023 20:47	See Notes	Sockeye	Spawning	1	1		-149.6344364	60.85862376
9/5/2023 20:57	No I am atop of Redd	Sockeye	Holding	1			-149.6340356	60.85783999
9/5/2023 21:31	No I am atop of Redd	Sockeye	Spawning	3	2		-149.6336793	60.85368713
8/15/2024 20:12	moved point on GPS	Sockeye	Holding	2	0		-149.6349318	60.85463875



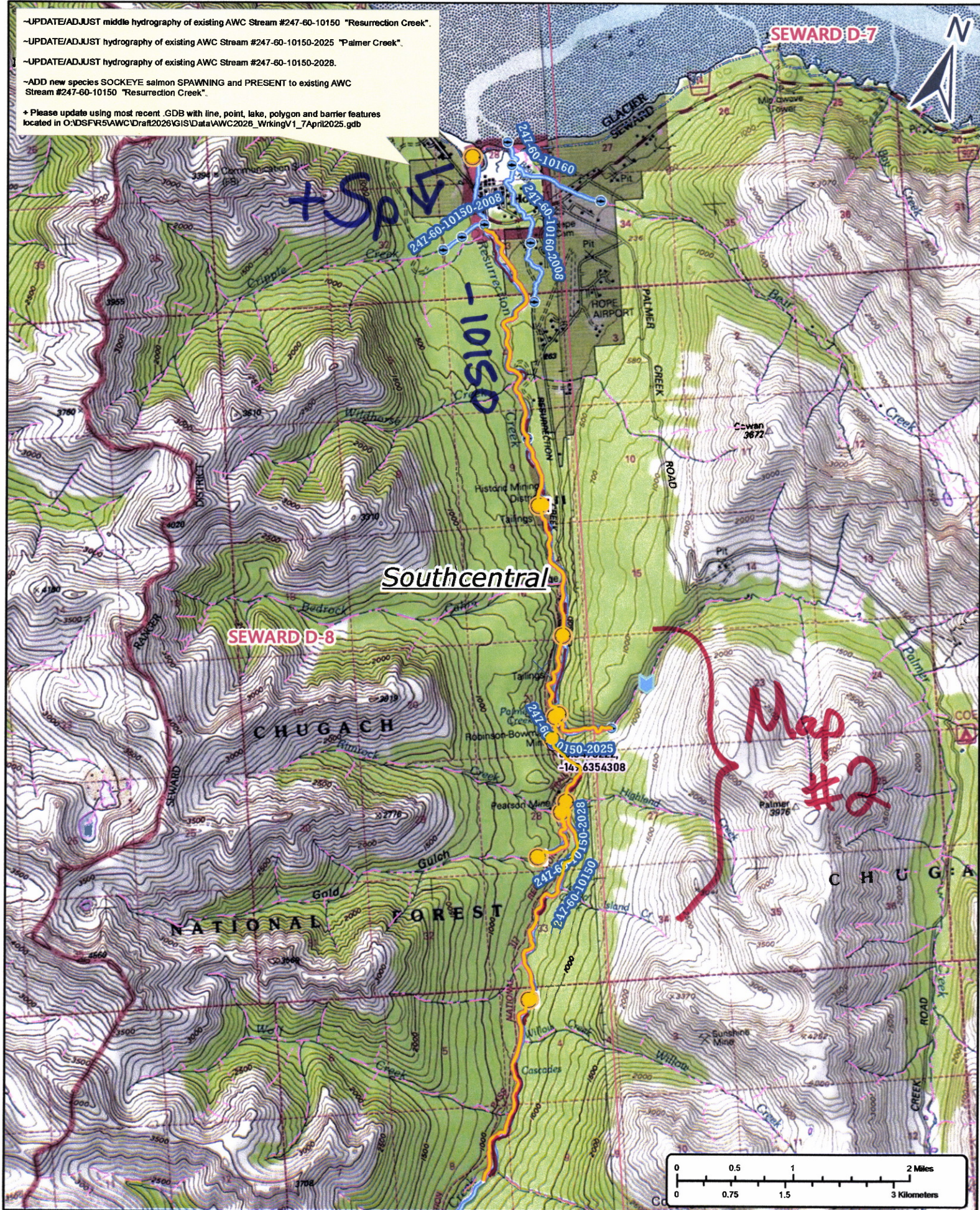
-UPDATE/ADJUST middle hydrography of existing AWC Stream #247-60-10150 "Resurrection Creek".

-UPDATE/ADJUST hydrography of existing AWC Stream #247-60-10150-2025 "Palmer Creek".

-UPDATE/ADJUST hydrography of existing AWC Stream #247-60-10150-2028.

-ADD new species SOCKEYE salmon SPAWNING and PRESENT to existing AWC Stream #247-60-10150 "Resurrection Creek".

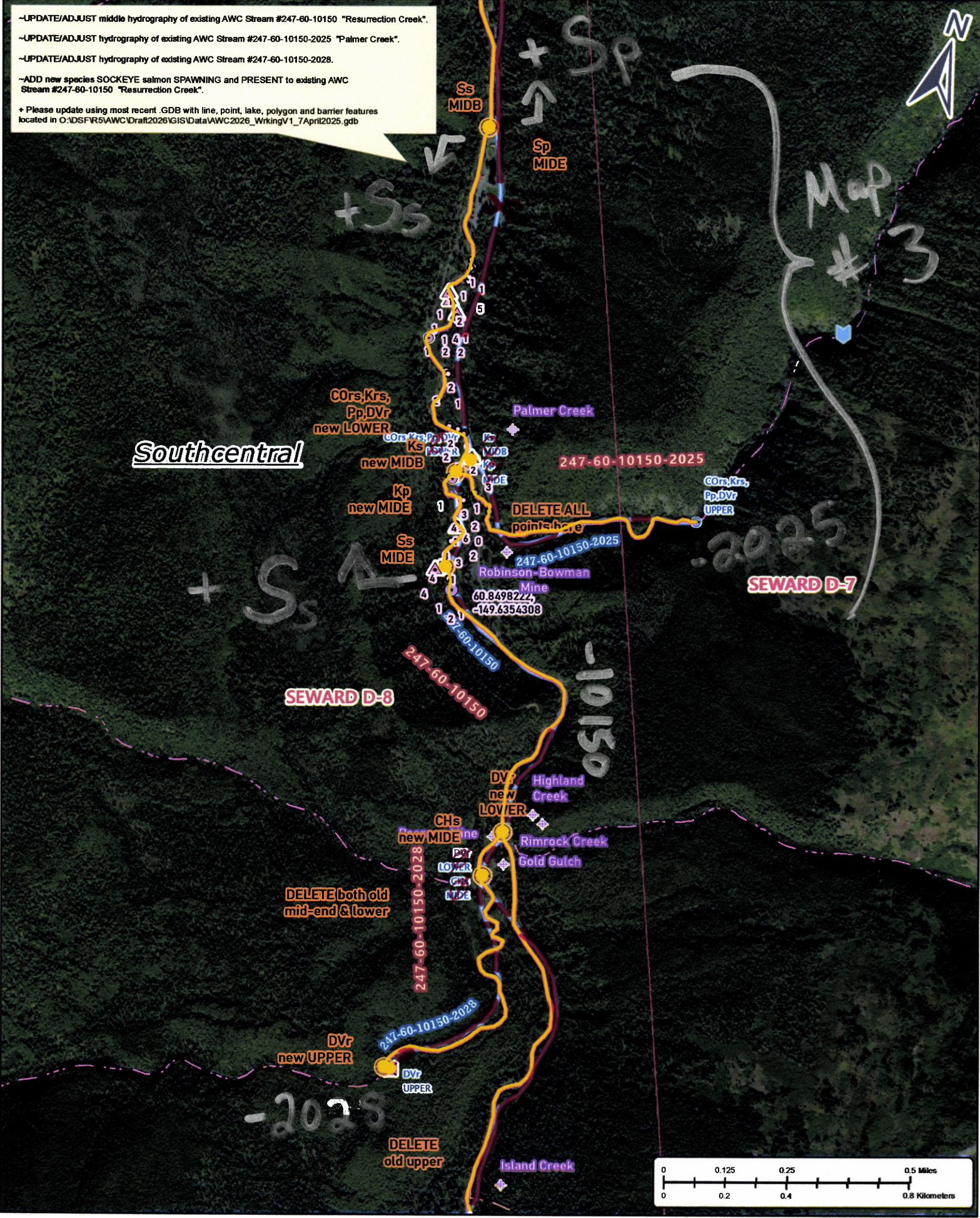
+ Please update using most recent .GDB with line, point, lake, polygon and barrier features located in O:\DSFR5AWC\Draft2026\GIS\Data\AWC2026\_WorkingV1\_7\_April2025.gdb



Num # 25-507

Map # 1

-UPDATE/ADJUST middle hydrography of existing AWC Stream #247-60-10150 "Resurrection Creek".  
 -UPDATE/ADJUST hydrography of existing AWC Stream #247-60-10150-2025 "Palmer Creek".  
 -UPDATE/ADJUST hydrography of existing AWC Stream #247-60-10150-2028.  
 -ADD new species SOCKEYE salmon SPAWNING and PRESENT to existing AWC Stream #247-60-10150 "Resurrection Creek".  
 + Please update using most recent .GDB with line, point, lake, polygon and barrier features located in O:\DSFR5\AWC\Draft2026\GIS\Data\AWC2026\_WrkingV1\_7April2025.gdb



Nom # 25-507

Map # 2

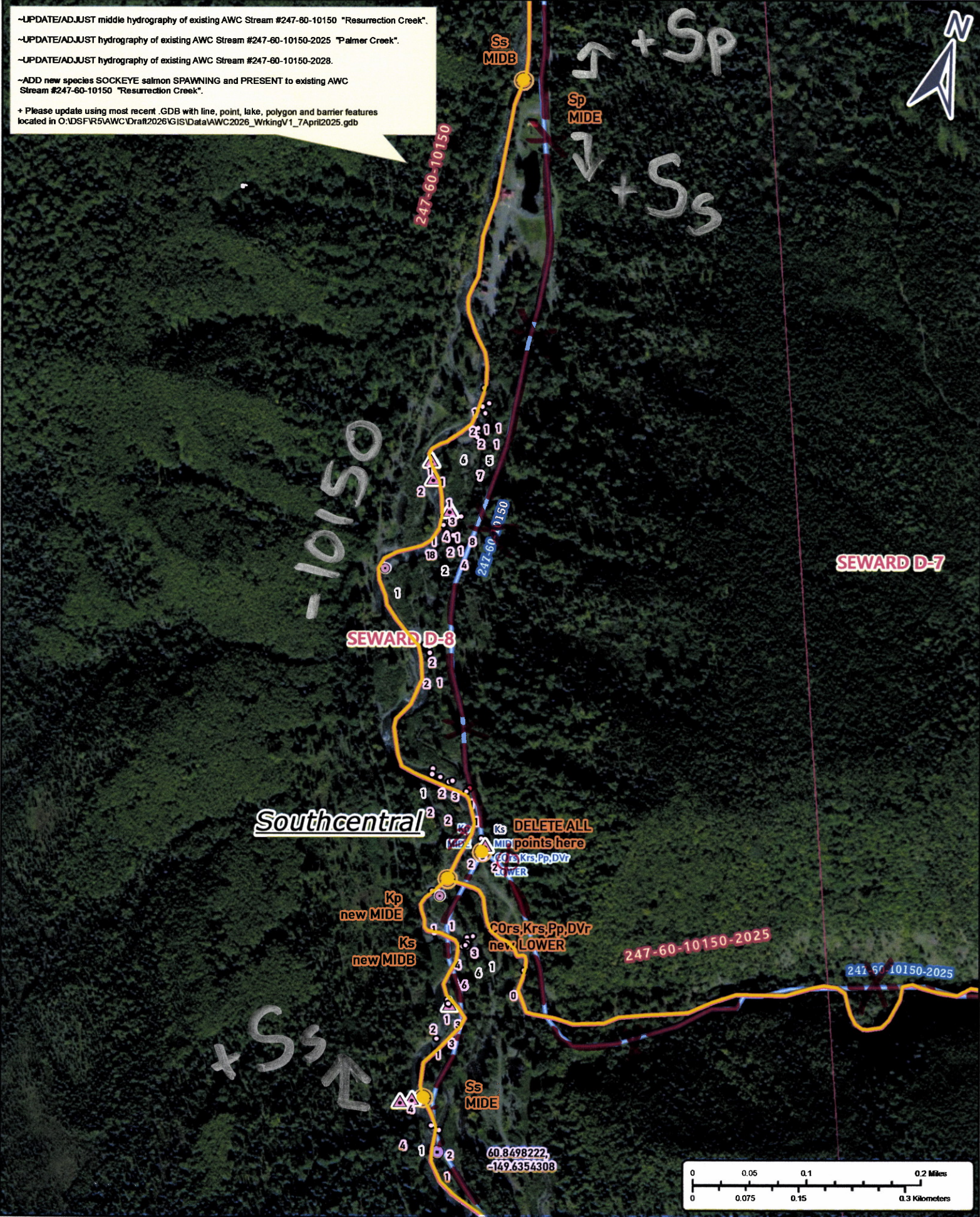
-UPDATE/ADJUST middle hydrography of existing AWC Stream #247-60-10150 "Resurrection Creek".

-UPDATE/ADJUST hydrography of existing AWC Stream #247-60-10150-2025 "Palmer Creek".

-UPDATE/ADJUST hydrography of existing AWC Stream #247-60-10150-2028.

-ADD new species SOCKEYE salmon SPAWNING and PRESENT to existing AWC Stream #247-60-10150 "Resurrection Creek".

+ Please update using most recent .GDB with line, point, lake, polygon and barrier features located in O:\DSFR5AWC\Draft2026\GISData\AWC2026\_WrkingV1\_7April2025.gdb



-10150-

+Sp  
Sp MIDE  
+Ss

SEWARD D-8

SEWARD D-7

Southcentral

DELETE ALL  
MP points here

Kp  
new MIDE  
Ks  
new MIDE

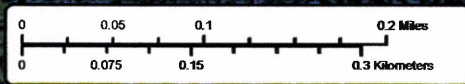
COrs, Krs, Pp, DVr  
new LOWER

247-60-10150-2025

247-60-10150-2025

+Ss  
Ss  
↑

60.8498222,  
-149.6354308



Nom # 25-507

Map #3