

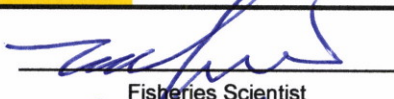
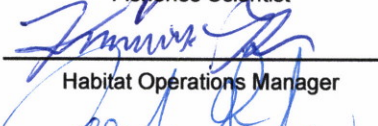
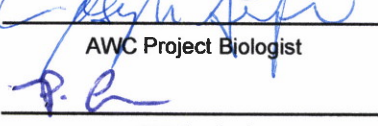
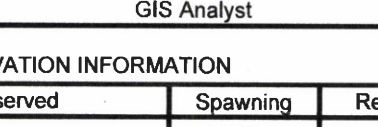


**State of Alaska  
Department of Fish and Game  
Sportfish Division**

**Nomination Form  
Anadromous Waters Catalog**

Region Southcentral USGS Quad(s) ANCHORAGE B-7, B-8  
 Anadromous Waters Catalog Number of Water Body 247-50-10110 (-2010); (-2070)  
 Name of Water Body Eagle River; South Fork Eagle River; \*Otter Creek  USGS Name  Local Name  
 Addition  Deletion  Correction  Backup Information

**For Office Use**

Nomination # <u>25-629</u>	 Fisheries Scientist	<u>8/11/2025</u> Date
Revision Year: <u>2026</u>	 Habitat Operations Manager	<u>8/11/25</u> Date
Revision to: <input checked="" type="checkbox"/> Atlas <input checked="" type="checkbox"/> Catalog	 AWC Project Biologist	<u>13 June 2025</u> Date
Revision Code: <u>C-9</u>	 GIS Analyst	<u>8/15/2025</u> Date

**OBSERVATION INFORMATION**

Species	Date(s) Observed	Spawning	Rearing	Present	Anadromous

-UPDATE/ADJUST lower hydrography segment and corresponding stream points of existing AWC Stream #247-50-10110 "Eagle River".  
 -UPDATE/ADJUST lower hydrography segment and corresponding stream points of existing AWC Stream #247-50-10110-2010 "Otter Creek".  
 -UPDATE/ADJUST hydrography and corresponding stream points of existing AWC Stream #247-50-10110-2070 "South Fork Eagle River".  
 \*\*See also - Nom's #25-002 through #25-006

Update hydrography of existing AWC stream #247-50-10110 "Eagle River" and tributary confluences with 247-50-10110-2070 "South Fork Eagle River" and 247-50-10110-2010 "Otter Creek" in conjunction with nominations from JBER Biologist Colette Brandt & USFWS Biologist Mitch Paisker for the area around "Otter Creek" (see Noms' #25-002 through #25-006)

Name of Observer (please print): Joe Giefer  
 Signature: 10.231.39.10 (Web Nomination) Date: 06/13/2025  
 Agency: \_\_\_\_\_  
 Address: ADF&G Division of Sport Fish 333 Raspberry Rd  
Anchorage, AK 99518

This certifies that in my best professional judgment and belief the above information is evidence that this waterbody should be included in or deleted from the Anadromous Waters Catalog.  
 Signature of Area Biologist: \_\_\_\_\_ Date: \_\_\_\_\_ Revision 3/16  
 Name of Area Biologist (please print): \_\_\_\_\_



- UPDATE/ADJUST lower hydrography segment and corresponding stream points of existing AWC Stream #247-50-10110 "Eagle River".
- UPDATE/ADJUST lower hydrography segment and corresponding stream points of existing AWC Stream #247-50-10110-2010 "Other Creek".
- UPDATE/ADJUST hydrography and corresponding stream points of existing AWC Stream #247-50-10110-2070 "South Fork Eagle River".

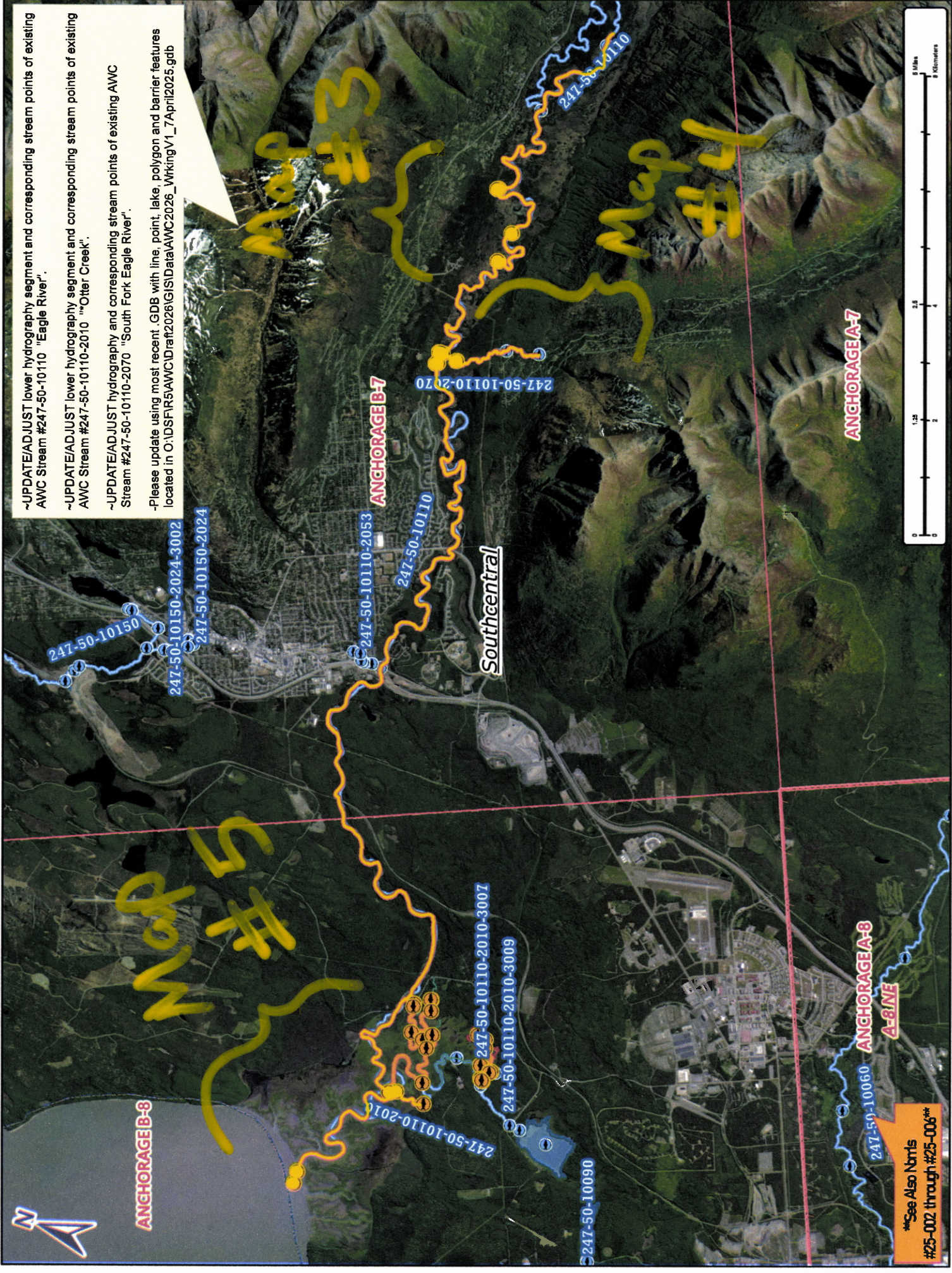
-Please update using most recent .GDB with line, point, lake, polygon and barrier features located in O:\DSF\5AWC\IDraft2026\GISData\AWC2026\_WrkingV1\_7April2025.gdb

\*\*See Also Nbrts #25-002 through #25-006\*\*

Map # 1

Nov # 25-629

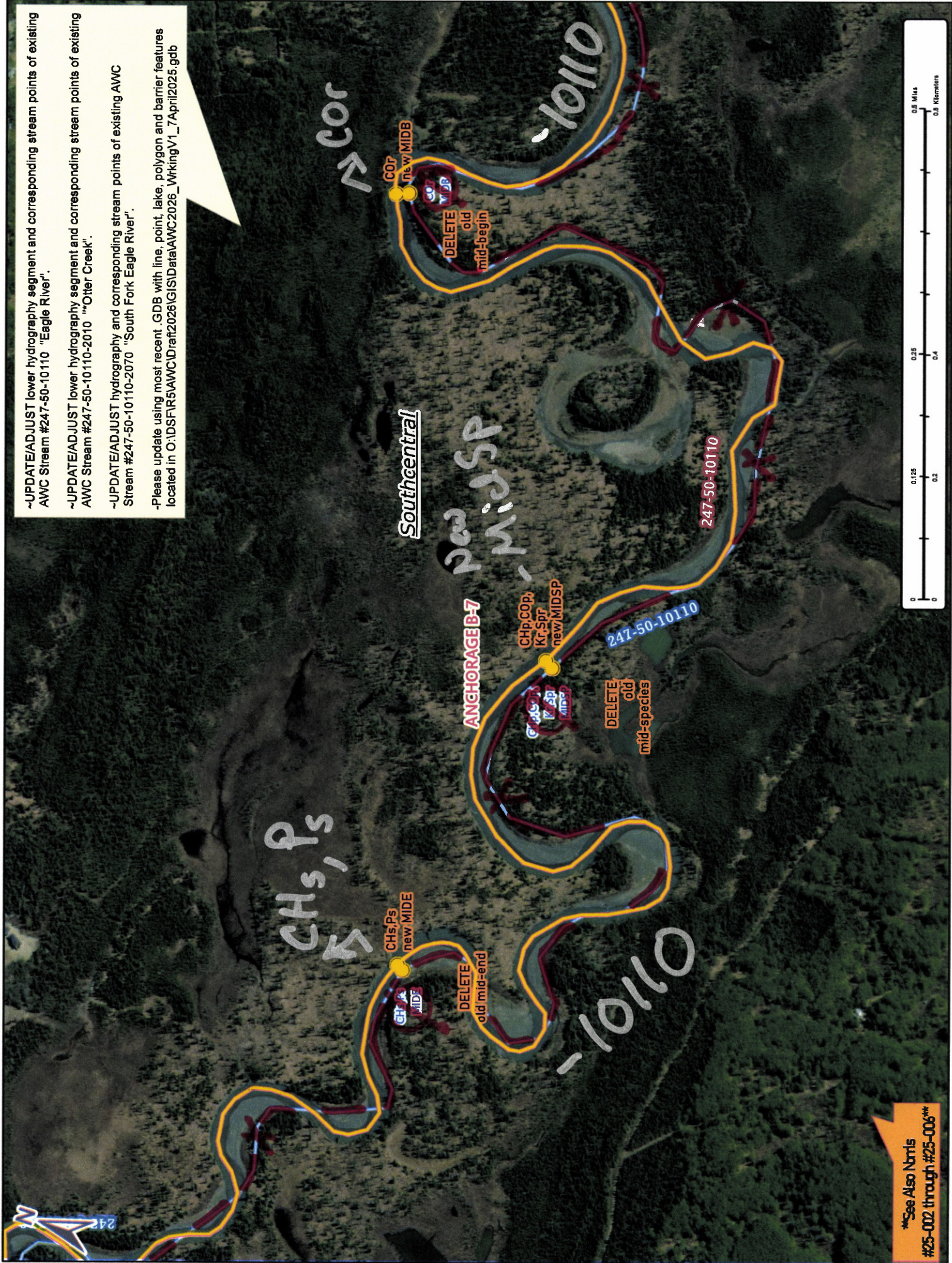
- UPDATE/ADJUST lower hydrography segment and corresponding stream points of existing AWC Stream #247-50-10110 "Eagle River".
  - UPDATE/ADJUST lower hydrography segment and corresponding stream points of existing AWC Stream #247-50-10110-2010 "w/Other Creek".
  - UPDATE/ADJUST hydrography and corresponding stream points of existing AWC Stream #247-50-10110-2070 "South Fork Eagle River".
- Please update using most recent GDB with line, point, lake, polygon and barrier features located in O:\DS\FIR5\AWC\Draft\2026\GIS\DATA\AWC2026\_WrkingV1\_7\April2025.gdb



\*\*See Also Nmnts #25-002 through #25-006\*\*

Map # 25-629  
Map #2

- UPDATE/ADJUST lower hydrography segment and corresponding stream points of existing AWC Stream #247-50-10110 "Eagle River".
  - UPDATE/ADJUST lower hydrography segment and corresponding stream points of existing AWC Stream #247-50-10110-2010 "Other Creek".
  - UPDATE/ADJUST hydrography and corresponding stream points of existing AWC Stream #247-50-10110-2070 "South Fork Eagle River".
- Please update using most recent GDB with line, point, lake, polygon and barrier features located in O:\DS\FIR5\AWC\Draft\2026\GIS\IData\AWC2026\_WrkingV1\_7Apr12025.gdb

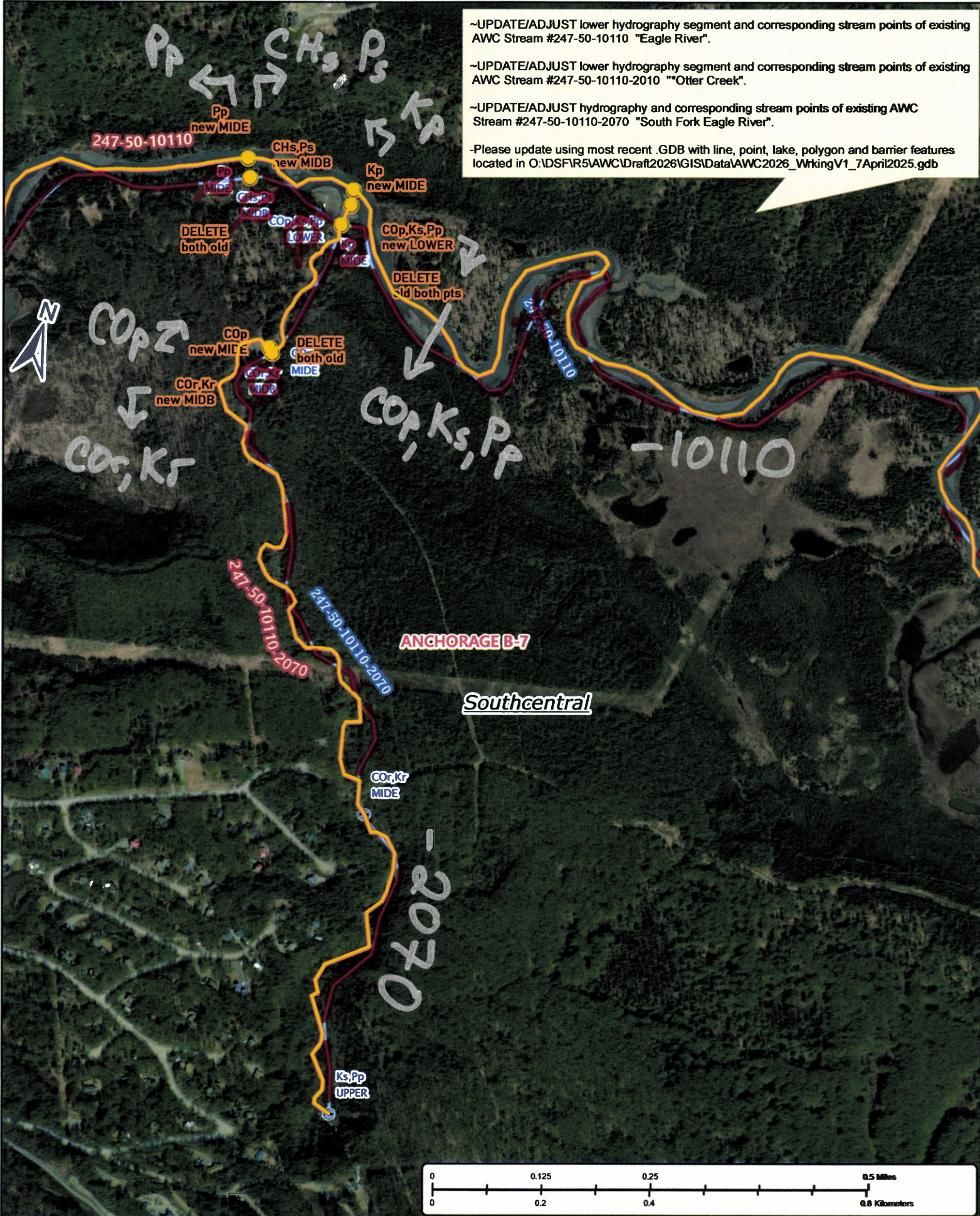


\*\*See Also Nbrs #25-002 through #25-006\*\*

Map # 3

Dom # 25-629

- UPDATE/ADJUST lower hydrography segment and corresponding stream points of existing AWC Stream #247-50-10110 "Eagle River".
- UPDATE/ADJUST lower hydrography segment and corresponding stream points of existing AWC Stream #247-50-10110-2010 "Otter Creek".
- UPDATE/ADJUST hydrography and corresponding stream points of existing AWC Stream #247-50-10110-2070 "South Fork Eagle River".
- Please update using most recent .GDB with line, point, lake, polygon and barrier features located in O:\DSFR5\AWC\Draft2026\GIS\Data\AWC2026\_WrkingV1\_7April2025.gdb



Now # 25-629

Map # 4

**ANCHORAGE B-8**

- UPDATE/ADJUST lower hydrography segment and corresponding stream points of existing AWC Stream #247-50-10110 "Eagle River".
- UPDATE/ADJUST lower hydrography segment and corresponding stream points of existing AWC Stream #247-50-10110-2010 "'Otter Creek'".
- UPDATE/ADJUST hydrography and corresponding stream points of existing AWC Stream #247-50-10110-2070 "South Fork Eagle River".
- Please update using most recent .GDB with line, point, lake, polygon and barrier features located in O:\DSFR5\AWC\Draft2026\GIS\Data\AWC2026\_WrkingV1\_7April2025.gdb



Nome # 25-629

Map # 5