



State of Alaska
Department of Fish and Game
Sportfish Division

Nomination Form
Anadromous Waters Catalog

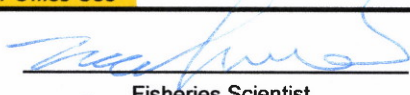
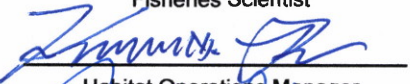
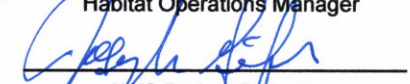
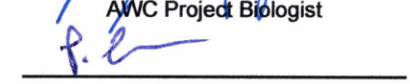
Region Southcentral USGS Quad(s) TALKEETNA B-1

Anadromous Waters Catalog Number of Water Body 247-41-10200-2081-3100-4136-5027 (-6009)

Name of Water Body _____ USGS Name Local Name

Addition Deletion Correction Backup Information

For Office Use

Nomination #	<u>25-637</u>		<u>Sept 05 / 2025</u>
		Fisheries Scientist	Date
Revision Year:	<u>2026</u>		<u>7/5/25</u>
		Habitat Operations Manager	Date
Revision to:	<input checked="" type="checkbox"/> Atlas <input checked="" type="checkbox"/> Catalog		<u>22 Aug 2025</u>
		AWC Project Biologist	Date
Revision Code:	<u>B-2, F-1</u>		<u>9/23/2025</u>
		GIS Analyst	Date

OBSERVATION INFORMATION

Species	Date(s) Observed	Spawning	Rearing	Present	Anadromous
coho salmon	06/10/2019			✓	✓
coho salmon	06/29/2023			✓	✓
chinook salmon	06/30/2023			✓	✓

~ADD new species life-phase COHO salmon REARING to existing AWC Stream #247-41-10200-2081-3100-4136-5027.

*Observations in this nomination also provide back-up supporting information for Chinook salmon rearing in existing AWC Stream #247-41-10200-2081-3100-4136-5027 and Coho salmon rearing in existing AWC Stream #247-41-10200-2081-3100-4136-5027-6009.
***See Noms #25-631 through #25-641

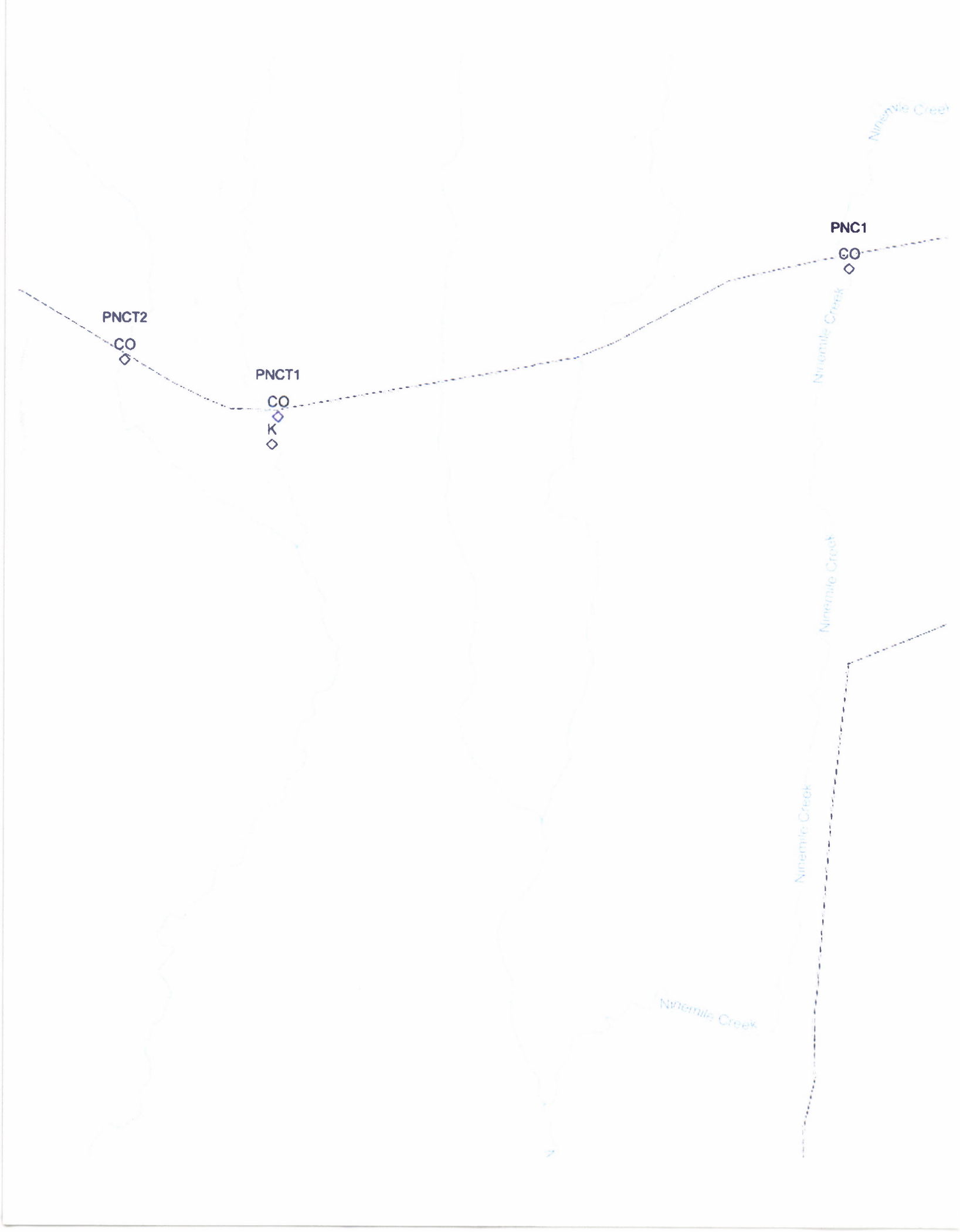
Comments:
Please note additional attachments as data in online nomination may not be complete. Site ID: PNCT1, PNCT2
Project Description: To supplement limited knowledge of juvenile salmon thermal requirements and habitat availability, USFWS performed comprehensive monitoring and modeling efforts—including habitat, temperature, and streamflow data collection—to define thermal niches for Chinook and Coho salmon.
Methods: Ten minnow traps were baited with salmon roe and deployed along each designated stream reach along 100 meter transects, and data including stream flow, temperature, and habitat observations were collected. After one hour, traps were pulled to ID, measure, weigh, and document juvenile salmon and other miscellaneous species.

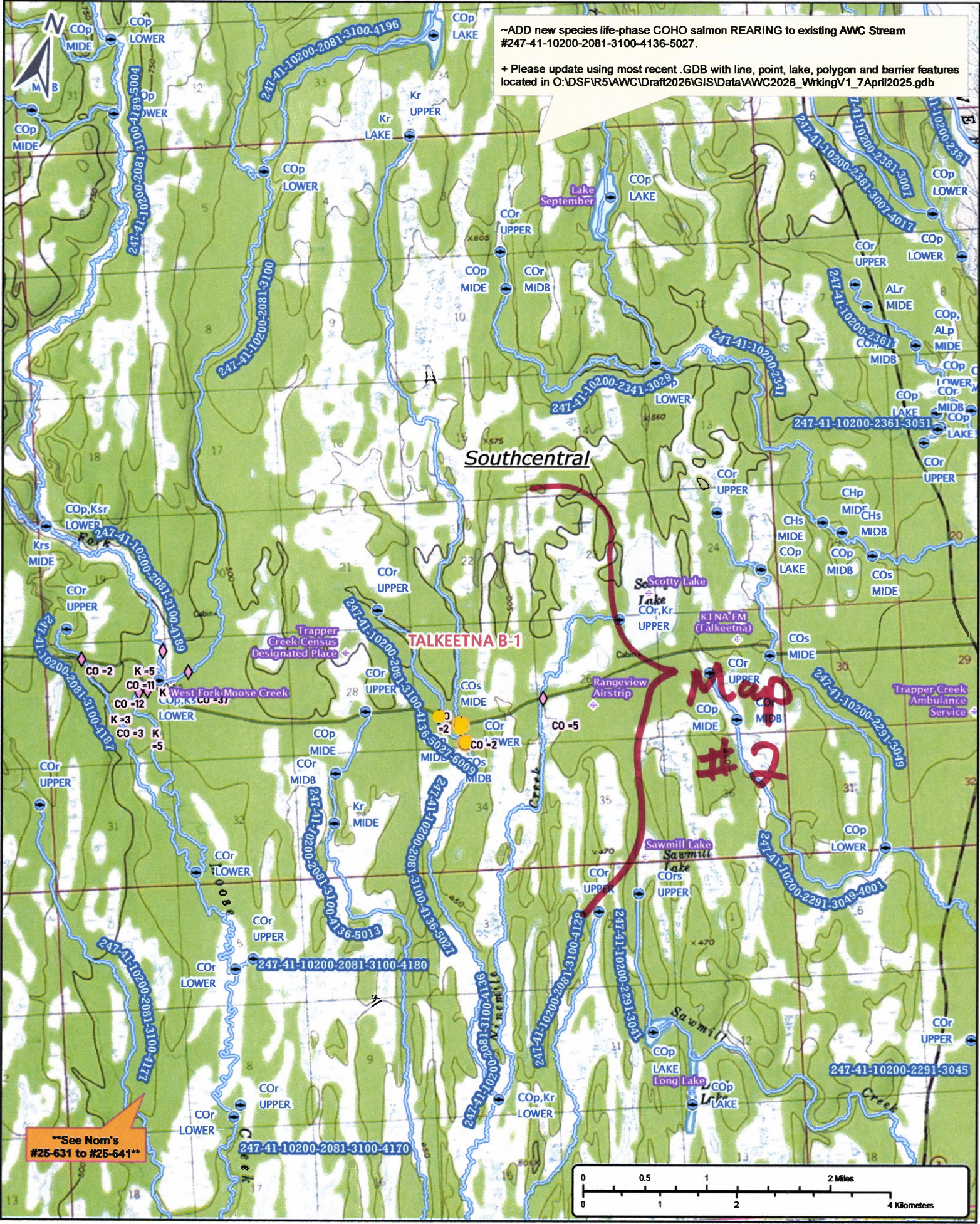
Name of Observer (please print): Emma Craig
Signature: 10.231.39.10 (Web Nomination) Date: 06/30/2025
Agency: _____
Address: 4700 BLM Rd
Anchorage, AK 99507

This certifies that in my best professional judgment and belief the above information is evidence that this waterbody should be included in or deleted from the Anadromous Waters Catalog.

Signature of Area Biologist: _____ Date: _____ Revision 3/16
Name of Area Biologist (please print): _____

Species	Site	Trap #	# Fish	Lat	Long	AWC Code	River Name	Region	Date Observed	Group #
CO	PTC1	3	1	62.35422	-150.664343	247-41-10200-2081-3181	Twentymile Creek	SCN	6/18/2024	1
CO	PKC1	1	38	62.348134	-150.622206	247-41-10200-2081	Kroto Creek	SCN	6/19/2019	2
CO	KrotoIU	2	3	62.31729	-150.64178	247-41-10200-2081	Kroto Creek	SCN	8/6/2019	2
CO	PKC72	1	7	62.346693	-150.649437	247-41-10200-2081-3197	Kroto Creek Tributary	SCN	7/9/2020	2
K	KrotoIT	9	1	62.31639	-150.64259	247-41-10200-2081	Kroto Creek	SCN	8/6/2019	2
K	PKC1	2	2	62.348134	-150.622206	247-41-10200-2081	Kroto Creek	SCN	6/30/2023	2
CO	PKC71	9	1	62.340046	-150.60626	247-41-10200-2081-3196	Kroto Creek Tributary	SCN	6/18/2019	3
CO	PSM1	1	3	62.337125	-150.574021	247-41-10200-2081-3194	Seventeenmile Creek	SCN	6/15/2022	4
CO	PSM2	1	11	62.333784	-150.56621	247-41-10200-2081-3194	Seventeenmile Creek	SCN	6/21/2024	4
CO	PSM71	1	4	62.336678	-150.564283	247-41-10200-2081-3194-4016	Seventeenmile Creek Tributary	SCN	6/22/2024	4
CO	PGC1	1	10	62.326171	-150.522439	247-41-10200-2081-3100-4167	Gate Creek	SCN	6/14/2019	5
CO	PGC2	1	13	62.323712	-150.519428	247-41-10200-2081-3100-4167	Gate Creek	SCN	6/13/2019	5
CO	PGC72	1	65	62.324777	-150.537098	247-41-10200-2081-3100-4167-5043	Gate Creek Tributary	SCN	6/17/2019	5
CO	PGC71	1	7	62.326224	-150.518549	247-41-10200-2081-3100-4167-5044	Gate Creek Tributary	SCN	7/15/2020	5
K	PGC1	3	3	62.326032	-150.521674	247-41-10200-2081-3100-4167	Gate Creek	SCN	6/16/2022	5
K	PGC2	2	1	62.323712	-150.519428	247-41-10200-2081-3100-4167	Gate Creek	SCN	8/10/2022	5
CO	PMCT1	1	2	62.319746	-150.463058	247-41-10200-2081-3100-4187	Moose Creek Tributary	SCN	6/13/2019	6
CO	PMMC1	1	11	62.320233	-150.442443	247-41-10200-2081-3100-4189	West Fork Moose Creek	SCN	6/11/2019	6
CO	MooseID	1	12	62.31551	-150.449	247-41-10200-2081-3100	Moose Creek	SCN	6/17/2019	6
CO	PMC1	1	37	62.317608	-150.436347	247-41-10200-2081-3100	Moose Creek	SCN	7/8/2020	6
CO	PMC2	1	3	62.3157	-150.446772	247-41-10200-2081-3100	Moose Creek	SCN	6/13/2022	6
K	MooseID	4	3	62.31551	-150.449	247-41-10200-2081-3100	Moose Creek	SCN	6/17/2019	6
K	PMC1	1	4	62.317608	-150.436347	247-41-10200-2081-3100	Moose Creek	SCN	6/16/2022	6
K	PMC2	1	5	62.3157	-150.446772	247-41-10200-2081-3100	Moose Creek	SCN	6/13/2022	6
K	PMMC1	1	5	62.320233	-150.442443	247-41-10200-2081-3100-4189	West Fork Moose Creek	SCN	6/13/2022	6
CO	PNCT1	1	2	62.309835	-150.368252	247-41-10200-2081-3100-4136-5027	Ninemile Creek Tributary	SCN	6/10/2019	7
CO	PNCT2	1	2	62.310813	-150.373878	247-41-10200-2081-3100-4136-5027-6009	Ninemile Creek Tributary	SCN	6/29/2023	7
K	PNCT1	3	2	62.309352	-150.368452	247-41-10200-2081-3100-4136-5027	Ninemile Creek Tributary	SCN	6/30/2023	7
CO	PNCT1	2	5	62.312401	-150.34735	247-41-10200-2081-3100-4136	Ninemile Creek	SCN	6/13/2022	8
CO	OMCT1	1	2	62.237076	-150.440582	247-41-10200-2081-3100-4166	Moose Creek Tributary	SCN	6/30/2023	9
K	OMCT1	1	2	62.237076	-150.440582	247-41-10200-2081-3100-4166	Moose Creek Tributary	SCN	6/19/2019	9
CO	OMCT2	1	5	62.213297	-150.475312	247-41-10200-2081-3100-4155-5008	Moose Creek Tributary	SCN	7/16/2020	10
CO	OMCT4	1	3	62.204341	-150.471837	247-41-10200-2081-3100-4155	Moose Creek Tributary	SCN	7/1/2023	10
CO	OML1	1	2	62.203264	-150.473496	247-41-10200-2081-3100-4155	Whistling Lake Outlet	SCN	7/1/2023	10
CO	OMCT3	1	4	62.204451	-150.476289	247-41-10200-2081-3100-4155-5014	Moose Creek Tributary	SCN	6/30/2023	10
K	OMCT3	6	3	62.204443	-150.475402	247-41-10200-2081-3100-4155-5014	Moose Creek Tributary	SCN	6/20/2019	10
K	OMCT4	5	1	62.204444	-150.471133	247-41-10200-2081-3100-4155	Moose Creek Tributary	SCN	7/1/2023	10
CO	OCC2	1	5	62.072697	-150.584883	247-41-10200-2081-3065	Chijuk Creek	SCN	7/13/2021	11
CO	OCC1	1	5	62.080703	-150.58422	247-41-10200-2081-3065	Chijuk Creek	SCN	7/13/2021	11
CO	OCC71	1	2	62.074882	-150.5877	247-41-10200-2081-3065-4027	Chijuk Creek Tributary	SCN	8/2/2022	11
K	OCC2	5	1	62.072294	-150.58478	247-41-10200-2081-3065	Chijuk Creek	SCN	6/20/2019	11
K	OCC71	3	1	62.074667	-150.587112	247-41-10200-2081-3065-4027	Chijuk Creek Tributary	SCN	7/13/2021	11
K	OCC1	5	1	62.08039	-150.584577	247-41-10200-2081-3065	Chijuk Creek	SCN	6/29/2023	11





~ADD new species life-phase COHO salmon REARING to existing AWC Stream #247-41-10200-2081-3100-4136-5027.

+ Please update using most recent .GDB with line, point, lake, polygon and barrier features located in O:\DSFR5\AWC\Draft2026\GIS\Data\AWC2026_WrkingV1_7April2025.gdb

See Nom's #25-631 to #25-641

Nom #25-637

Map #1

~ADD new species life-phase COHO salmon REARING to existing AWC Stream #247-41-10200-2081-3100-4136-5027.
+ Please update using most recent .GDB with line, point, lake, polygon and barrier features located in O:\DSFR5\AWC\Draft2026\GIS\Data\AWC2026_WrkingV1_7April2025.gdb



COrs
new MIDE

K-2

CO-2

TALKEETNA B-1

Southcentral

COrs

new MIBB

MIBB

COp

MIDE

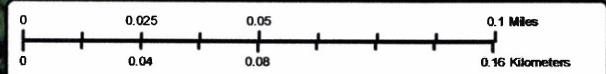
CO

LOWER

247-41-10200-2081-3100-4136-5027-6009

247-41-10200-2081-3100-4136-5027

See Nom's #25-631 to #25-641



Nom #25-637

Map #3