



**State of Alaska
Department of Fish and Game
Sportfish Division**

**Nomination Form
Anadromous Waters Catalog**

Region Southcentral USGS Quad(s) SELDOVIA B-5
 Anadromous Waters Catalog Number of Water Body 241-11-10800 (-2017) (-2020) (-2030)
 Name of Water Body Barabara Creek USGS Name Local Name
 Addition Deletion Correction Backup Information

For Office Use

Nomination #	<u>25-889</u>		<u>12/26/2021</u>
Revision Year:	<u>2026</u>		<u>12/24/25</u>
Revision to:	<input checked="" type="checkbox"/> Atlas <input checked="" type="checkbox"/> Catalog		<u>17 Dec 2025</u>
Revision Code:	<u>C-9, B-1</u>		<u>1/14/2025</u>

OBSERVATION INFORMATION

Species	Date(s) Observed	Spawning	Rearing	Present	Anadromous
Dolly Varden	07/19/2025		✓		✓

~UPDATE/ADJUST lower hydrography of existing AWC Stream #241-11-10800 "Barabara Creek".
 ~UPDATE/ADJUST lower hydrography of existing AWC Stream #241-11-10800-2017.
 ~UPDATE/ADJUST lower hydrography of existing AWC Stream #241-11-10800-2020.
 ~UPDATE/ADJUST hydrography of existing AWC Stream #241-11-10800-2030.
 ~ADD new species Dolly Varden PRESENT & REARING to existing AWC Stream #241-11-10800 "Barabara Creek".

Comments:

See page 2 for observer comments.

Coordinates (Lat,Long): Upper(59.450151,-151.613844) Lower(59.450555,-151.614686)

Name of Observer (please print): Duncan Green
 Signature: 10.231.39.10 (Web Nomination) Date: 10/11/2025
 Agency: ADF&G - Div of SF
 Address: 333 Raspberry Rd.
Anchorage, AK 99518

This certifies that in my best professional judgment and belief the above information is evidence that this waterbody should be included in or deleted from the Anadromous Waters Catalog.

Signature of Area Biologist: _____ Date: _____ Revision 3/16
 Name of Area Biologist (please print): _____



State of Alaska
Department of Fish and Game
Division of Sport Fish

Fish Survey
Nomination Form
Anadromous Waters Catalog

Region: South Central USGS Quad: Seldovia B-5
 Anadromous Waters Catalog Number of Waterway: 241-11-10800 (-2017) (-2020) (-2030)
 Name of Waterway: Barabara Creek USGS Name Local Name
 Addition Deletion For Office Use Correction Backup Information

Nomination # 25-889	Fisheries Scientist	Date
Revision Year: 2026	Habitat Operations Manager	Date
Revision to: Atlas _____ Catalog _____ Both <input checked="" type="checkbox"/>	AWC Project Biologist	Date
Revision Code: C-9, B-1	GIS Analyst	Date

Site Information Station: FSGOA12F09 Date Observed: 7/19/2025 Legal Desc.: Latitude: Longitude: Datum:
 Up Stream 59.45015 -151.61384 WGS84
 Down Stream 59.45056 -151.61469 WGS84

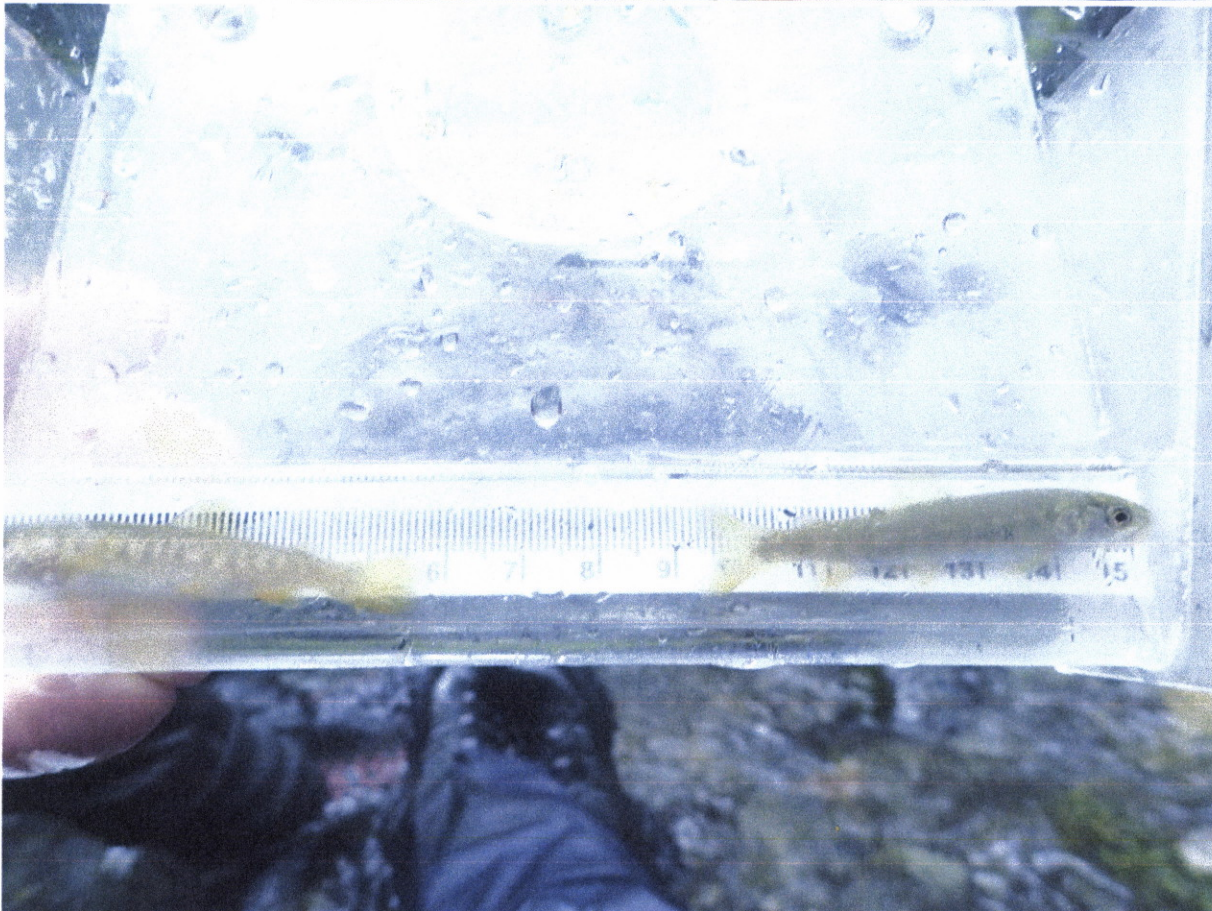
Life History: Anadromous
 Species/LifeStage: Dolly Varden juvenile
 Sampling Method (No. of fish): PEF (11)

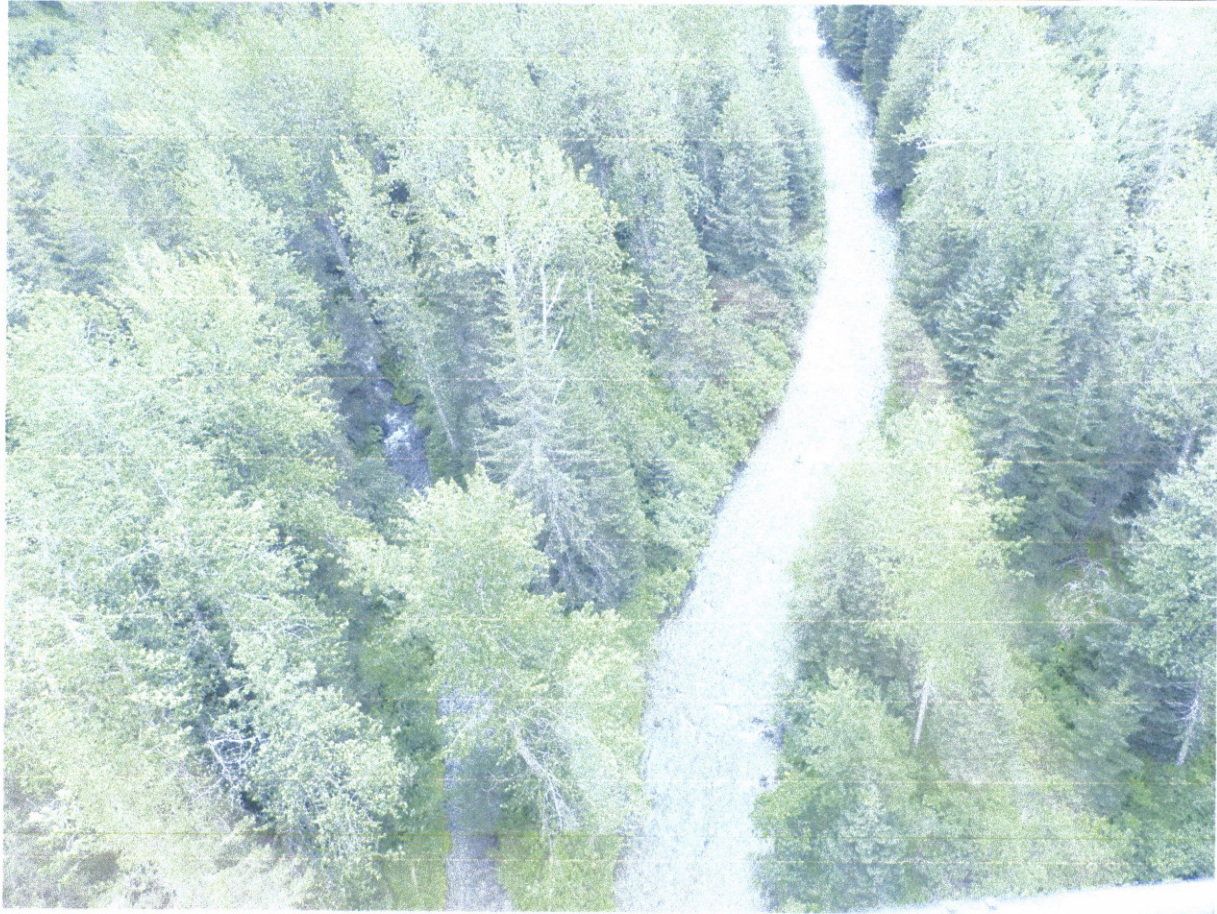
Key to Sample Method
 (PEF) Backpack Electrofisher

Additional Comments: Add Dolly Varden rearing to waypoint 567 (59.450555, -151.614686). Eleven juvenile Dolly Varden were collected via backpack electrofishing at or upstream of that waypoint.

Name of Observer: Jonah Bacon, Fishery Biologist 1 Phone: Date Printed: 10/11/2025
 Signature: _____
 Address: Alaska Department of Fish & Game, Division of Commercial Fisheries
 Homer, AK

This certifies that in my best professional judgment and belief the above information is evidence that this waterbody should be included in or deleted from the Anadromous Waters Catalog
 Signature of Area Biologist: _____ Date: _____





SELDOVIA C-5

SELDOVIA B-5

241-12

241-16

B A Y

KASITSNA BAY

Southcentral



Hesketh Island

17 Herring Island
16 Cronin Island

H E M A

S E L D O V I A

S E L D O V I A

B A Y

Indian Village

CHp,Ps
LOWER

CHr,COs
LOWER

Barbara Pt
CHs,Ps,Sp
LOWER

Pr,Sr
MIDB

Sp
MIDE

CHs
MIDE

CHs,COs,Ps
UPPER

CHp,Ps
LOWER

CHs,COs,Ps
LOWER

CHp,Ps
LOWER

CHp,Ps
LOWER

CHp,Ps
LOWER

CHp,Ps
LOWER

CHp,Ps
LOWER

CHr,COs
LOWER

Ps
MIDE

CHp,Ps
LOWER

CHp,Ps
LOWER

CHp,Ps
LOWER

Pr,Sr
MIDE

Pr,Sr
MIDE

CHs
MIDE

Pp
LOWER

Pp
LOWER

Pp
UPPER

Pp
UPPER

Pp
UPPER

Pp
UPPER

Pp
UPPER

Pp
UPPER

Pp
UPPER

Pp
UPPER

Pp
UPPER

Pp
UPPER

Pp
UPPER

Pp
UPPER

241-11-10800

241-11-10800-2017

241-11-10800-2020

241-11-10800-2030

241-11-10740

241-11-10740-2010

241-11-10740

241-11-10740

241-11-10740

241-11-10740

241-11-10740

241-11-10740

241-11-10740

241-11-10740

241-11-10740

241-11-10740

241-11-10740

241-11-10800

241-11-10800-2017

241-11-10800-2020

241-11-10800-2030

241-11-10740

241-11-10740-2010

241-11-10740

241-11-10740

241-11-10740

241-11-10740

241-11-10740

241-11-10740

241-11-10740

241-11-10740

241-11-10740

241-11-10740

241-11-10740

241-11-10800

241-11-10800-2017

241-11-10800-2020

241-11-10800-2030

241-11-10740

241-11-10740-2010

241-11-10740

241-11-10740

241-11-10740

241-11-10740

241-11-10740

241-11-10740

241-11-10740

241-11-10740

241-11-10740

241-11-10740

241-11-10740

241-11-10800

241-11-10800-2017

241-11-10800-2020

241-11-10800-2030

241-11-10740

241-11-10740-2010

241-11-10740

241-11-10740

241-11-10740

241-11-10740

241-11-10740

241-11-10740

241-11-10740

241-11-10740

241-11-10740

241-11-10740

241-11-10740

241-11-10800

241-11-10800-2017

241-11-10800-2020

241-11-10800-2030

241-11-10740

241-11-10740-2010

241-11-10740

241-11-10740

241-11-10740

241-11-10740

241-11-10740

241-11-10740

241-11-10740

241-11-10740

241-11-10740

241-11-10740

241-11-10740

241-11-10800

241-11-10800-2017

241-11-10800-2020

241-11-10800-2030

241-11-10740

241-11-10740-2010

241-11-10740

241-11-10740

241-11-10740

241-11-10740

241-11-10740

241-11-10740

241-11-10740

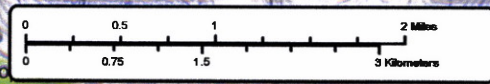
241-11-10740

241-11-10740

241-11-10740

241-11-10740

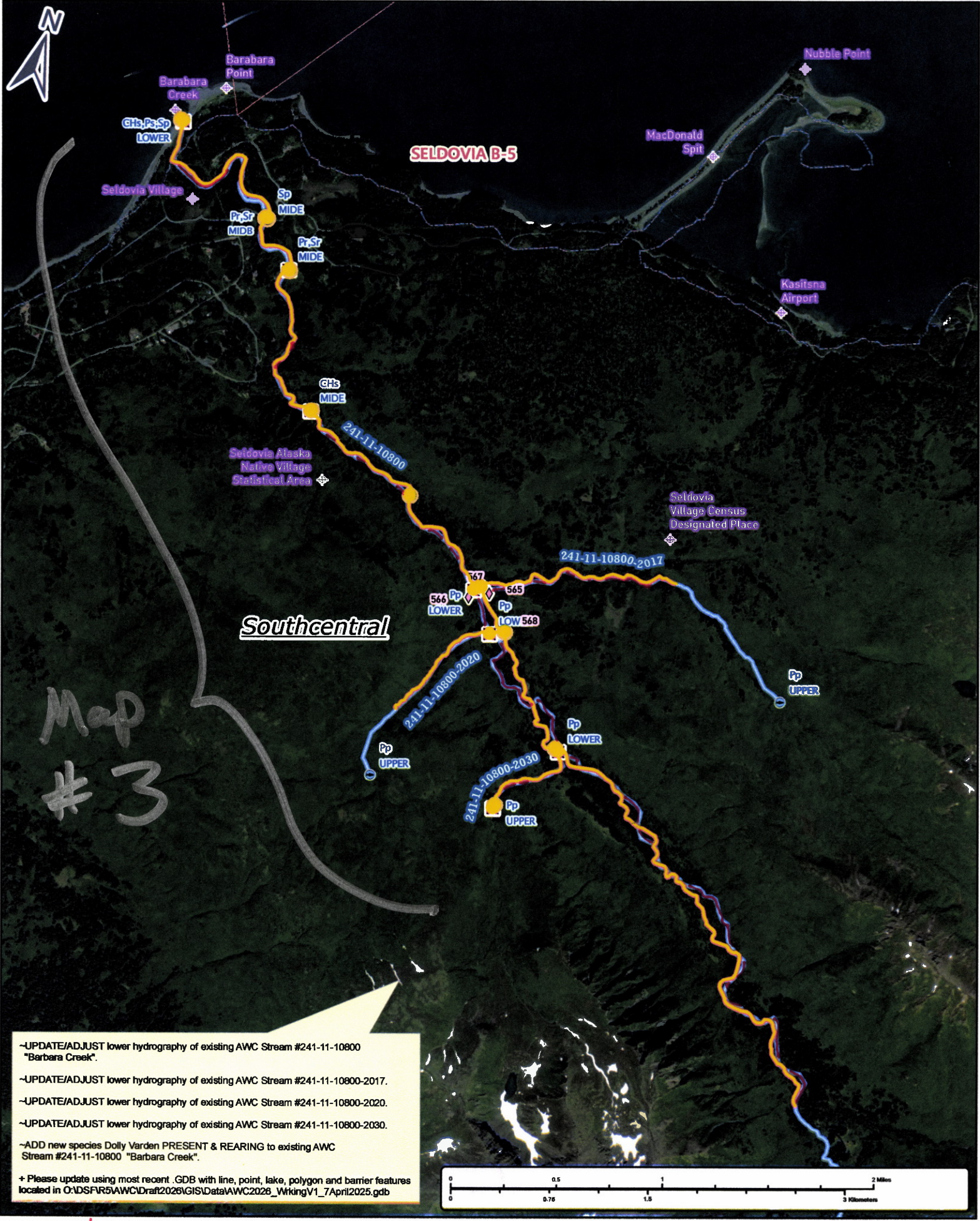
- UPDATE/ADJUST lower hydrography of existing AWC Stream #241-11-10800 "Barbara Creek".
 - UPDATE/ADJUST lower hydrography of existing AWC Stream #241-11-10800-2017.
 - UPDATE/ADJUST lower hydrography of existing AWC Stream #241-11-10800-2020.
 - UPDATE/ADJUST lower hydrography of existing AWC Stream #241-11-10800-2030.
 - ADD new species Dolly Varden PRESENT & REARING to existing AWC Stream #241-11-10800 "Barbara Creek".
- + Please update using most recent .GDB with line, point, lake, polygon and barrier features located in O:\DSFR5\AWC\Draft2026\GIS\Data\AWC2026_WorkingV1_7April2025.gdb



Num # 25-889

Map # 1

Map # 2



-UPDATE/ADJUST lower hydrography of existing AWC Stream #241-11-10800 "Barbara Creek".

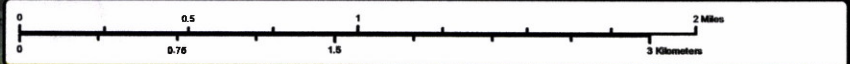
-UPDATE/ADJUST lower hydrography of existing AWC Stream #241-11-10800-2017.

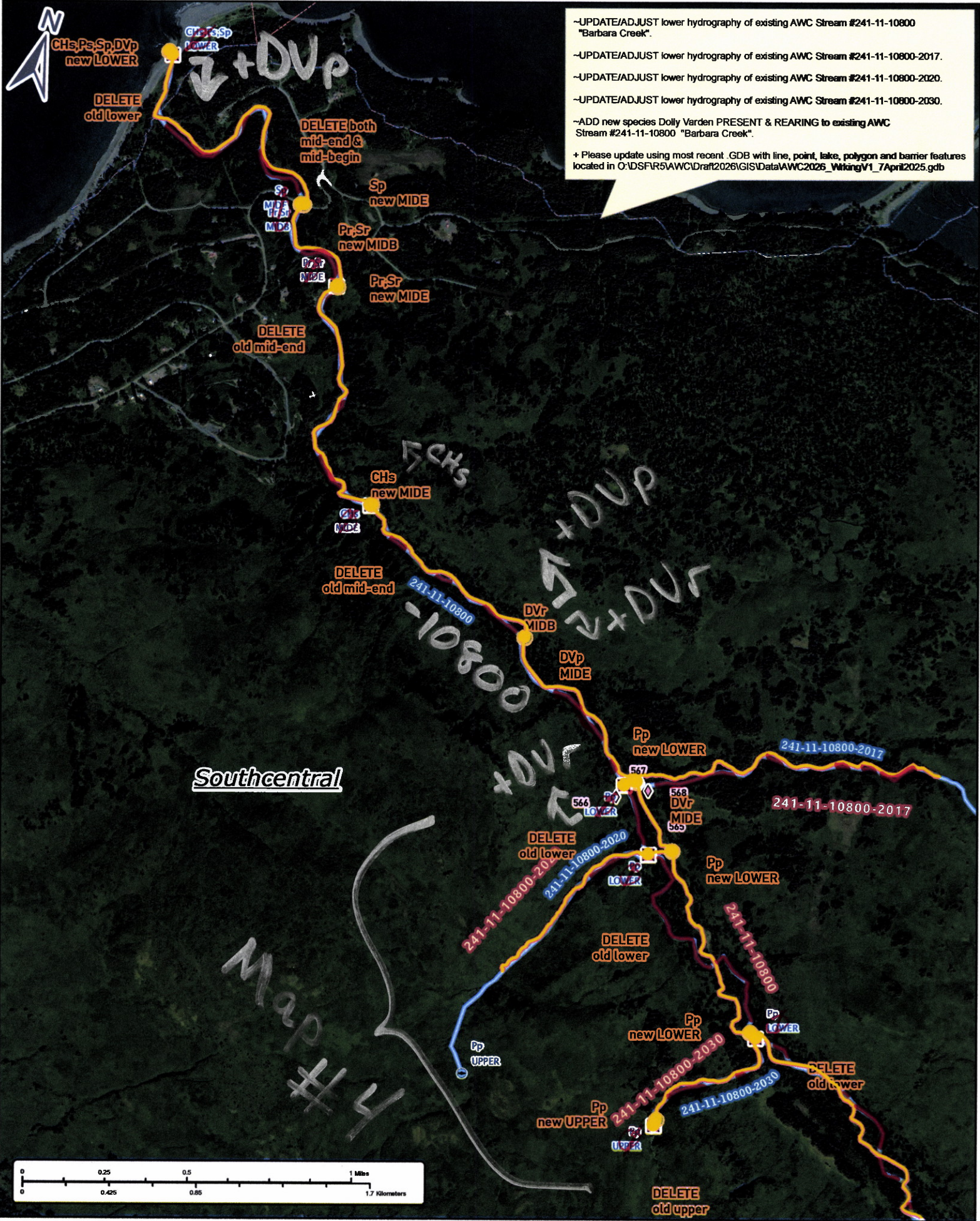
-UPDATE/ADJUST lower hydrography of existing AWC Stream #241-11-10800-2020.

-UPDATE/ADJUST lower hydrography of existing AWC Stream #241-11-10800-2030.

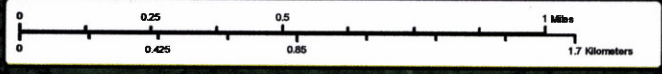
-ADD new species Dolly Varden PRESENT & REARING to existing AWC Stream #241-11-10800 "Barbara Creek".

+ Please update using most recent .GDB with line, point, lake, polygon and barrier features located in C:\MSFR5AWC\Draft2026\GISData\AWC2026_WorkingV1_7April2025.gdb





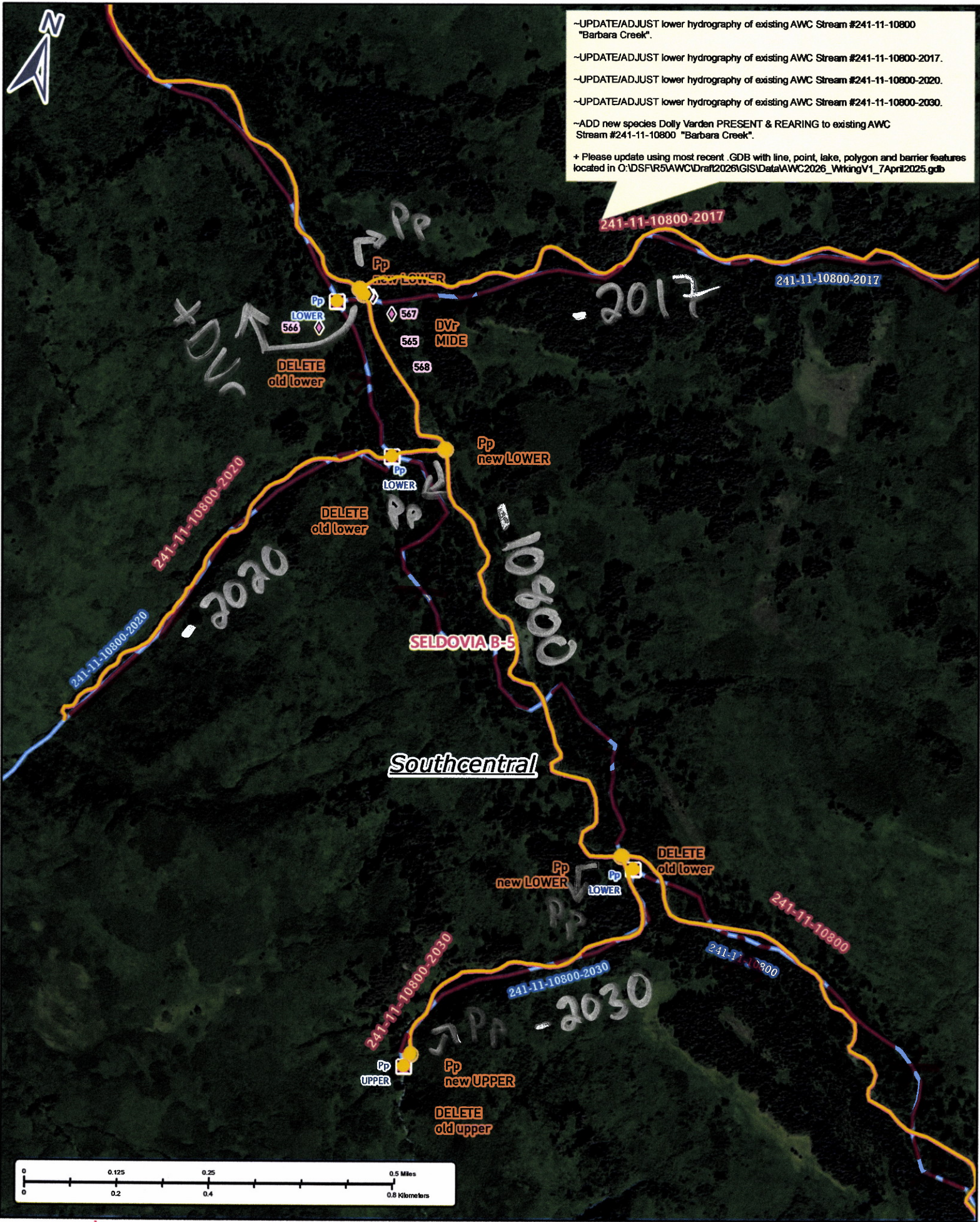
~UPDATE/ADJUST lower hydrography of existing AWC Stream #241-11-10800 "Barbara Creek".
 ~UPDATE/ADJUST lower hydrography of existing AWC Stream #241-11-10800-2017.
 ~UPDATE/ADJUST lower hydrography of existing AWC Stream #241-11-10800-2020.
 ~UPDATE/ADJUST lower hydrography of existing AWC Stream #241-11-10800-2030.
 ~ADD new species Dolly Varden PRESENT & REARING to existing AWC Stream #241-11-10800 "Barbara Creek".
 + Please update using most recent .GDB with line, point, lake, polygon and barrier features located in O:\DSFR5\AWC\Draft2026\GISData\AWC2026_WikingsV1_7April2025.gdb



Nom # 25-889

Map # 3

- UPDATE/ADJUST lower hydrography of existing AWC Stream #241-11-10800 "Barbara Creek".
- UPDATE/ADJUST lower hydrography of existing AWC Stream #241-11-10800-2017.
- UPDATE/ADJUST lower hydrography of existing AWC Stream #241-11-10800-2020.
- UPDATE/ADJUST lower hydrography of existing AWC Stream #241-11-10800-2030.
- ADD new species Dolly Varden PRESENT & REARING to existing AWC Stream #241-11-10800 "Barbara Creek".
- + Please update using most recent .GDB with line, point, lake, polygon and barrier features located in O:\DS\FR5\AWC\Draft2026\GIS\Data\AWC2026_WorkingV1_7April2025.gdb



Nom # 25-889

Map #4