

Alaska Department of Fish and Game

Habitat Section
Southeast Region



182-80-101000-2005-3010-4004

ADDITION

Water body name:

Survey date: 9/18/2024

Quad: Yakutat C-5

Species & Lifestage: CO

Upper Reach Latitude: 59.497064 **Longitude:** -139.667698

Survey crew: CD, FC

Lower Reach Latitude: 59.493807 **Longitude:** -139.686767

Findings: We surveyed this uncataloged stream from the road using baited minnow traps and GPS and captured juvenile coho salmon (Figure 1). The stream is slow moving through ditched channel alongside the road (Table 1; Figures 2, 3). Trapping further up the ditched channel may be more successful later in the fall.

Recommendations: Extend upper extent of Stream No. 182-80-101000-2005-3010-4004 in the anadromous waters catalog.

Nomination: Pending

Table 1.—182-80-10100-2005-3010-4004 survey data

Waypoint	Latitude	Longitude	Notes	Stream Width ft	Stream Substrate	Habitat Features	Gradient %	Sample Effort	Sample Results
1342	59.497844	-139.666975	Setting minnow trap in ditched stream. Water flowing towards the airport.		Fine Organic		0-1	MT	No Fish
1343	59.497068	-139.667720	Setting minnow trap here. May be upper extent of this stream on this side of the road.	4-6	Fine Organic		0-1		3 CO



Figure 1.—Juvenile coho salmon captured at waypoint 1343.



Figure 2.–Ponded water in ditched channel looking downstream at waypoint 1343.



Figure 3.–Ponded water in ditched channel looking upstream at waypoint 1343. .

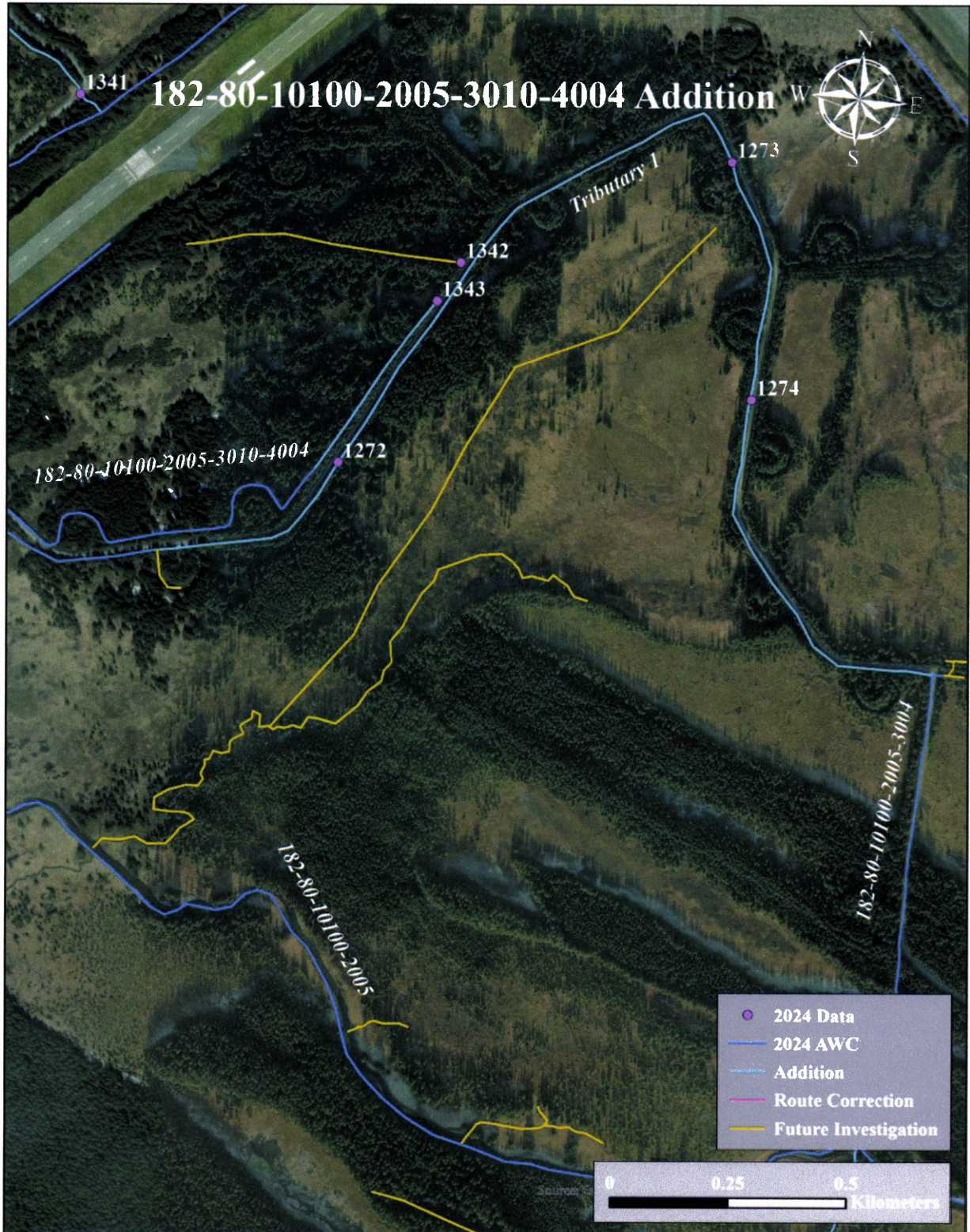
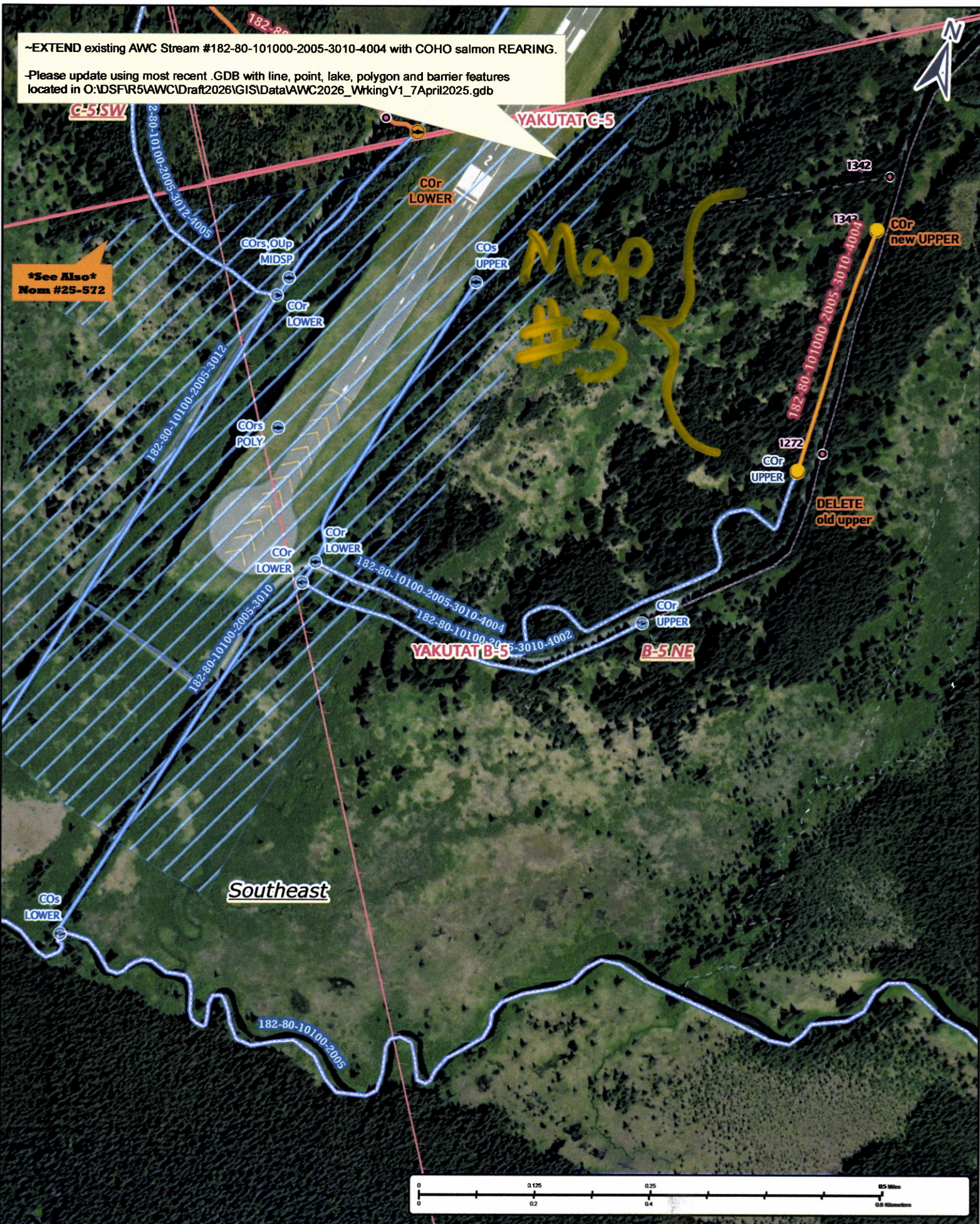


Figure 4.—182-80-10100-2005-3010-4004 addition map.

~EXTEND existing AWC Stream #182-80-10100-2005-3010-4004 with COHO salmon REARING.

-Please update using most recent GDB with line, point, lake, polygon and barrier features located in O:\DS\FIR5\AWC\Draft2026\GIS\Data\AWC2026_WorkingV1_7April2025.gdb



See Also
Nom #25-572

Map #3

Nom #25-571

Map #2

~EXTEND existing AWC Stream #182-80-101000-2005-3010-4004 with COHO salmon REARING.

-Please update using most recent .GDB with line, point, lake, polygon and barrier features located in O:\DS\FIR5\AWC\Draft2026\GIS\Data\AWC2026_WrkingV1_7April2025.gdb



1342

1343

COr
new UPPER

+COr

Southeast

B-5 NE

YAKUTAT B-5

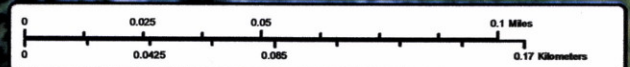
-4004

182-80-101000-2005-3010-4004

1272

DELETE
old upper

182-80-10100-2005-3010-4004



Num #25-571

Map #3