



State of Alaska
Department of Fish and Game
Sportfish Division

Nomination Form
Anadromous Waters Catalog

Region Southeastern USGS Quad(s) ICY BAY D-2 & D-3; (N) and (Inset)

Anadromous Waters Catalog Number of Water Body 186-15-10550-2005-3022-4018-5010

Name of Water Body _____ USGS Name Local Name
 Addition Deletion Correction Backup Information

For Office Use

Nomination #	<u>25-589</u>	<u>[Signature]</u>	<u>5/11/2025</u>
		Fisheries Scientist	Date
Revision Year:	<u>2026</u>	<u>[Signature]</u>	<u>9/11/2025</u>
		Habitat Operations Manager	Date
Revision to:	<input checked="" type="checkbox"/> Atlas <input checked="" type="checkbox"/> Catalog	<u>[Signature]</u>	<u>5 Aug 2025</u>
		AWC Project Biologist	Date
Revision Code:	<u>A-2d</u>	<u>[Signature]</u>	<u>6/13/2025</u>
		GIS Analyst	Date

OBSERVATION INFORMATION

Species	Date(s) Observed	Spawning	Rearing	Present	Anadromous
coho salmon	08/20/2024		✓		✓

~ADD new AWC Stream #186-15-10550-2005-3022-4018-5010 with COHO salmon REARING.
 Process Nom #25-588 first

Comments:
 Coordinates (Lat,Long): Upper(59.985040,-141.541434) Lower(59.984666,-141.541979)

Name of Observer (please print): Nicholas Jensen
 Signature: 10.231.39.10 (Web Nomination) Date: 05/06/2025
 Agency: _____
 Address: 802 3rd St First Floor
Juneau, AK 99824

This certifies that in my best professional judgment and belief the above information is evidence that this waterbody should be included in or deleted from the Anadromous Waters Catalog.
 Signature of Area Biologist: _____ Date: _____ Revision 3/16
 Name of Area Biologist (please print): _____

Alaska Department of Fish and Game

Habitat Section
Southeast Region



186-15-10550-2005-3022-4018 Tributary 2

ADDITION

Water body name:

Survey date: 8/20/2024

Quad: Icy Bay D2, D3

Species & Lifestage:

Upper Reach Latitude: 59.985040 **Longitude:** -141.541434

Survey crew: NJ, CD, FC

Lower Reach Latitude: 59.984666 **Longitude:** -141.541979

Findings: We surveyed this uncataloged stream using a backpack electrofisher and GPS and captured juvenile coho salmon. The streambed is comprised of mostly fine organic material and leads up through an open wetland area with ponded water. The stream channel continued past the pond but quickly dried up; likely connects to additional ponds further upstream during high water (Table 1; Figures 1–3).

Recommendations: Add this uncataloged stream to the anadromous waters catalog for rearing coho salmon (Figure 4).

Nomination: Pending

Table 1.–186-15-10550-2005-3022-4018 tributary 2 survey data.

Waypoint	Latitude	Longitude	Notes	Stream Width ft	Stream Substrate	Habitat Features	Gradient %	Sample Effort	Sample Results
1051	59.984717	-141.541824	CO caught and VID in main mapped channel. Another tributary enters here on river left, looks fishy and will need to investigate. Continuing up main channel.				2-4	EF	2 CO
1054	59.985043	-141.541456	Tributary opens up into muskeg area with many Coho visually seen in standing water. Water channelizers just downstream of standing water and enters tributary that continues down and enters the main mapped channel.		Fine Organic		1-2	EF	3 CO
1055	59.984915	-141.541463	This tributary narrows up from where the ponded water enters and becomes approximately one to one and a half foot wide with a mild gradient. Seems like good fish habitat continuing on this small channel.		Sand Small Gravel		1-2	VI	4 CO
1056	59.985134	-141.5410495	Small channel continues through wetland area and ends up in small ponded water. Water ends here.		Fine Organic		1-2	EF	No Fish



Figure 1.—Juvenile coho salmon caught at waypoint 1054.



Figure 2.—Upstream at waypoint 1054.

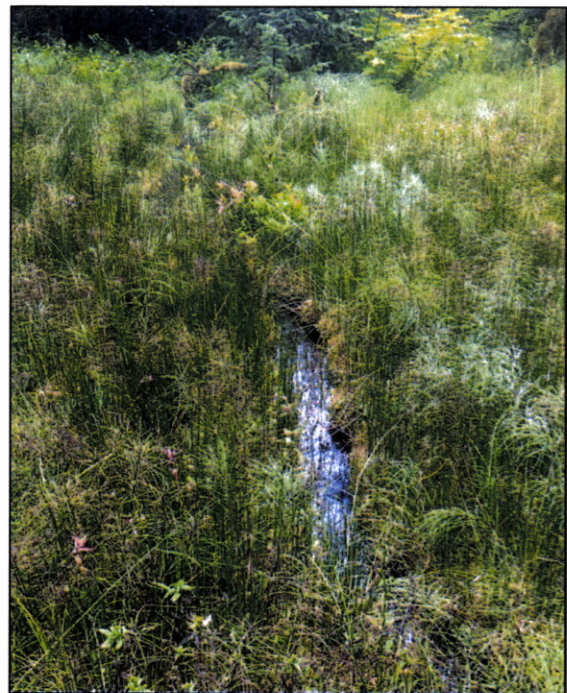


Figure 3.—Upstream at waypoint 1056.

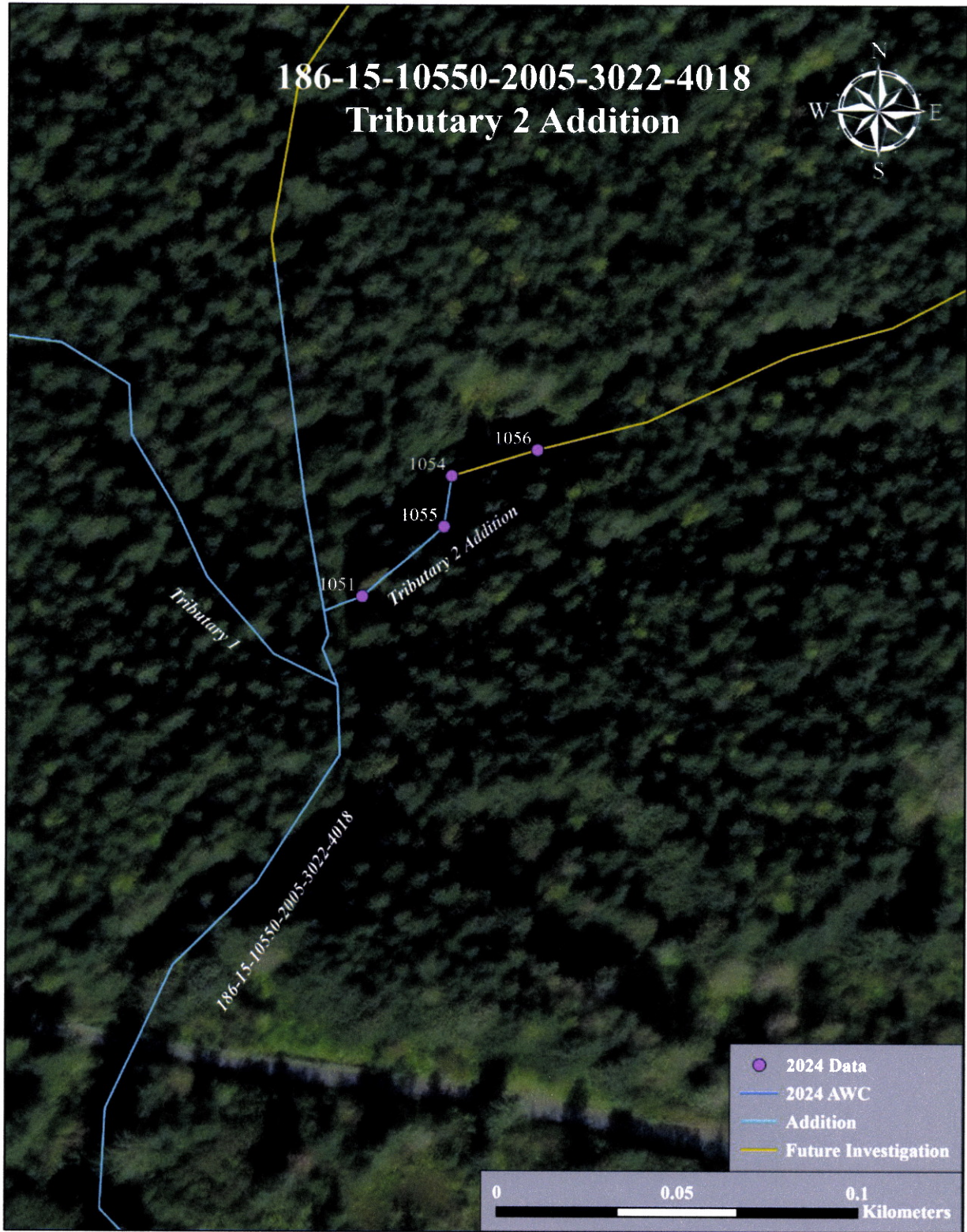


Figure 4.—186-15-10550-2005-3022-4018 tributary 2 addition map.



Southeast

ICY BAY
D-2 & D-3

COs
new LOWER

DELETE
old lower

COs
new LOWER

D-2 & D-3 N

DELETE
old lower

Carson Creek

DELETE
old lower

COs
new LOWER

COs
new LOWER

COs
new LOWER

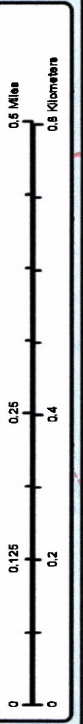
COs
new LOWER

COs
new LOWER

COs
new LOWER

COs
new LOWER

~ADD new AWC Stream #186-15-10550-2005-3022-4018-5010 with COHO salmon REARING.
+ Please update using most recent .GDB with line, point, lake, polygon and barrier features located in O:\DS\FIR5AWC\Draft2026\GIS\Data\AWC2026_WorkingV1_7April2025.gdb



1071

1047

1046

1044

610

612

1047

1046

610

612

1047

1046

610

612

1047

1046

610

612

1047

1046

610

612

1047

1046

610

612

1047

1046

610

612

1071

1047

1046

1044

610

612

1047

1046

610

612

1047

1046

610

612

1047

1046

610

612

1047

1046

610

612

1047

1046

610

612

1047

1046

610

612

1071

1047

1046

1044

610

612

1047

1046

610

612

1047

1046

610

612

1047

1046

610

612

1047

1046

610

612

1047

1046

610

612

1047

1046

610

612

1071

1047

1046

1044

610

612

1047

1046

610

612

1047

1046

610

612

1047

1046

610

612

1047

1046

610

612

1047

1046

610

612

1047

1046

610

612

1071

1047

1046

1044

610

612

1047

1046

610

612

1047

1046

610

612

1047

1046

610

612

1047

1046

610

612

1047

1046

610

612

1047

1046

610

612

1071

1047

1046

1044

610

612

1047

1046

610

612

1047

1046

610

612

1047

1046

610

612

1047

1046

610

612

1047

1046

610

612

1047

1046

610

612

1071

1047

1046

1044

610

612

1047

1046

610

612

1047

1046

610

612

1047

1046

610

612

1047

1046

610

612

1047

1046

610

612

1047

1046

610

612

1071

1047

1046

1044

610

612

1047

1046

610

612

1047

1046

610

612

1047

1046

610

612

1047

1046

610

612

1047

1046

610

612

1047

1046

610

612

1071

1047

1046

1044

610

612

1047

1046

610

612

1047

1046

610

612

1047

1046

610

612

1047

1046

610

612

1047

1046

610

612

1047

1046

610

612

1071

1047

1046

1044

610

612

1047

1046

610

612

1047

1046

610

612

1047

1046

610

612

1047

1046

610

612

1047

1046

610

612

1047

1046

610

612

1071

1047

1046

1044

610

612

1047

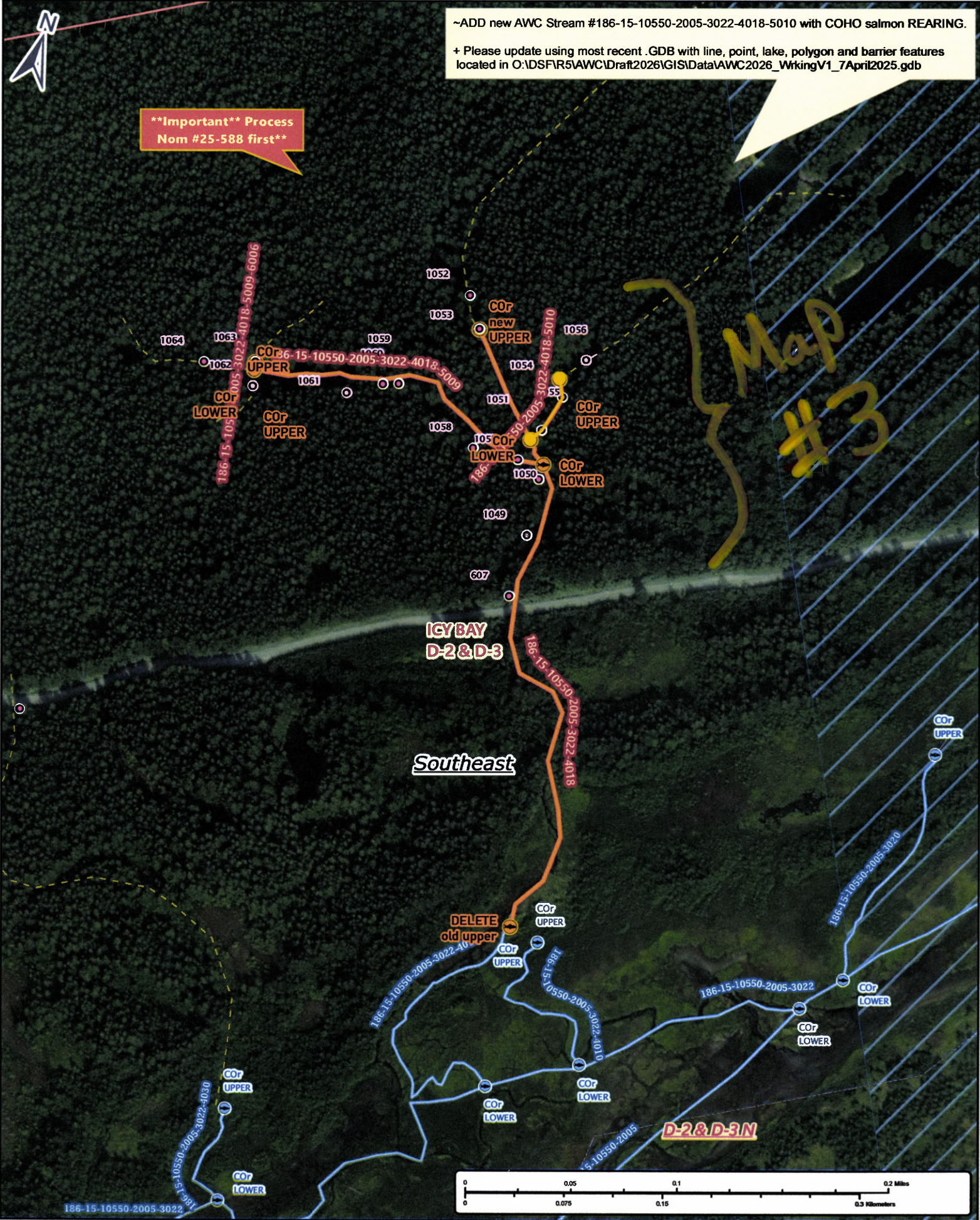
1046

~ADD new AWC Stream #186-15-10550-2005-3022-4018-5010 with COHO salmon REARING.

+ Please update using most recent .GDB with line, point, lake, polygon and barrier features located in O:\DSF\R5\AWC\Draft2026\GIS\Data\AWC2026_WrkingV1_7April2025.gdb

****Important** Process
Nom #25-588 first****

Map #3



Nom #25-589

Map #2



****Important** Process
Nom #25-588 first****

~ADD new AWC Stream #186-15-10550-2005-3022-4018-5010 with COHO salmon REARING.
 + Please update using most recent .GDB with line, point, lake, polygon and barrier features located in O:\DSF\15AWC\Draft2026\GIS\Data\AWC2026_WrkingV1_7April2025.gdb

Nom #25-589

Map #3