



**Nom #25-600**

~SHORTEN current upper reach of existing AWC Stream #191-20-13400-2040. ✓✓

~UPDATE/ADJUST hydrography and corresponding stream mouth point of existing AWC Stream #191-20-13400-2040.\*\* ✓✓

\*\* ~On lower portion of hydro of existing AWC Stream #191-20-13400-2040, RENUMBER to AWC Stream #191-20-13400-2060. ✓✓

~COMBINE/RENUMBER existing AWC Stream #191-20-13400-2040-3009 into the upper extent of AWC Stream #191-20-13400-2060. ✓✓

~UPDATE/ADJUST hydrography and SHORTEN current upper extent of existing AWC Stream #191-20-13400-2030-3007. ✓✓

~RENUMBER existing AWC Stream #191-20-13400-2030-3007 to AWC Stream #191-20-13400-2040-3006. ✓✓

~RENUMBER existing AWC Stream #191-20-12400-2040-3007 to AWC Stream #191-20-13400-2060-3007. ✓✓

~ADD new AWC Stream #191-20-13400-2040-3021 with COHO salmon REARING. ✓✓

*\*\*The stream number corrections address highly dynamic coastal systems that have meandered significantly since AWC stream lines were created and the original stream nominations lacked precise gps or hydrography data for reference.*

*\*\*Process Nom #25-593 first\*\**

# Alaska Department of Fish and Game

Habitat Section  
Southeast Region



## 191-20-13400-2040 Tributary 1

**ADDITION**

**Water body name:**

**Survey date:** 7/18/2024

**Quad:** Icy Bay D2, D3

**Species & Lifestage:**

**Upper Reach Latitude:** 59.987891 **Longitude:** -141.731510

**Survey crew:** NJ, CD, DK

**Lower Reach Latitude:** 59.984940 **Longitude:** -141.732382

**Findings:** We surveyed this uncataloged stream using baited minnow traps and GPS and captured juvenile coho salmon. This is a large, open ponded complex just south of the road that provides excellent rearing habitat. It doesn't appear to cross the road, but a tributary connected to this complex east of here does (Table 1; Figures 1, 2).

**Recommendations:** Add this uncataloged stream to the anadromous waters catalog for rearing coho salmon (Figure 3).

**Nomination:** Pending

Table 1.—191-20-13400-2040 tributary 1 survey data.

Waypoint	Latitude	Longitude	Notes	Stream Width ft	Stream Substrate	Habitat Features	Gradient %	Sample Effort	Sample Results
593	59.987894	-141.731533	Huge ponded water complex. Set MT approx 50 ft south of road but water seems to connect throughout whole area. Coho caught from multiple age classes. Will fly drone to see what complex looks like. Great rearing habitat.		Fine Organic		0-1	MT	37 CO



Figure 1.—Juvenile coho salmon caught at waypoint 593.



Figure 2.—Pondered water complex at waypoint 593.

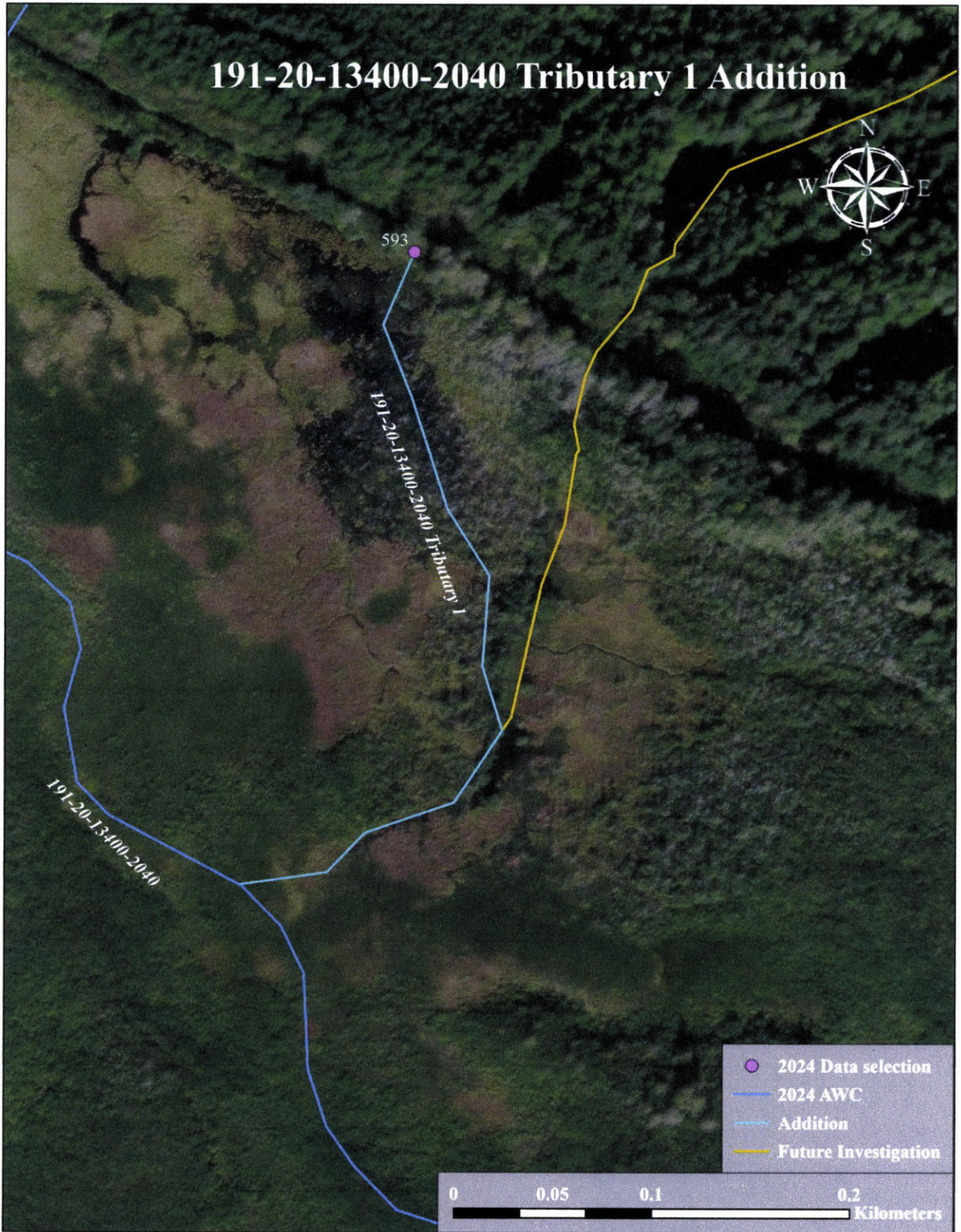


Figure 3.—191-20-13400-2040 tributary 1 addition map.



- SHORTEN current upper reach of existing AWC Stream #191-20-13400-2040.
- UPDATE/ADJUST hydrography and corresponding stream mouth point of existing AWC Stream #191-20-13400-2040.\*\*
- \*\* -On lower portion of hydro of existing AWC Stream #191-20-13400-2040, RENUMBER to AWC Stream #191-20-13400-2060.
- COMBINE/RENUMBER existing AWC Stream #191-20-13400-2040-3009 into the upper extent of AWC Stream #191-20-13400-2060.
- UPDATE/ADJUST hydrography and SHORTEN current upper extent of existing AWC Stream #191-20-13400-2030-3007.
- RENUMBER existing AWC Stream #191-20-13400-2030-3007 to AWC Stream #191-20-13400-2040-3006.
- RENUMBER existing AWC Stream #191-20-12400-2040-3007 to AWC Stream #191-20-13400-2060-3007.
- ADD new AWC Stream #191-20-13400-2040-3021 with COHO salmon REARING.

\*\*The stream number corrections address highly dynamic coastal systems that have meandered significantly since AWC stream lines were created and the original stream nominations lacked precise gps or hydrography data for reference.

+ Please update using most recent .GDB with line, lake, polygon and barrier features located in C:\DS\FRG\AWC\Draft2026\GISData\AWC2026\_WorkingV1\_7April2025.gdb

\*\*See Also: Nom #25-601\*\*



Map #2

\*\*Important\*\* Process Nom #25-593 first\*\*

Map #1

Nom #25-600

~SHORTEN current upper reach of existing AWC Stream #191-20-13400-2040.

~UPDATE/ADJUST hydrography and corresponding stream mouth point of existing AWC Stream #191-20-13400-2040.

\*\* -On lower portion of hydro of existing AWC Stream #191-20-13400-2040, RENUMBER to AWC Stream #191-20-13400-2060.

~COMBINE/RENUMBER existing AWC Stream #191-20-13400-2040-3008 into the upper extent of AWC Stream #191-20-13400-2060.

~UPDATE/ADJUST hydrography and SHORTEN current upper extent of existing AWC Stream #191-20-13400-2030-3007.

~RENUMBER existing AWC Stream #191-20-13400-2030-3007 to AWC Stream #191-20-13400-2040-3006.

~RENUMBER existing AWC Stream #191-20-12400-2040-3007 to AWC Stream #191-20-13400-2060-3007.

~ADD new AWC Stream #191-20-13400-2040-3021 with COHO salmon REARING.

\*\*The stream number corrections address highly dynamic coastal systems that have meandered significantly since AWC stream lines were created and the original stream nominations lacked precise gps or hydrography data for reference.

+ Please update using most recent GDB with line, point, lake, polygon and barrier features located in O:\DS\FR5\AWC\ID\rat2026\GISData\AWC2026\_W\KingV1\_7April2025.gdb

*Map #5*

**\*\*See Also: Nom #25-601\*\***

**\*\*Important\*\* Process Nom #25-593 first\*\***

*Map #2*

*Nom #25-600*





-SHORTEN current upper reach of existing AWC Stream #191-20-13400-2040.

-UPDATE/ADJUST hydrography and corresponding stream mouth point of existing AWC Stream #191-20-13400-2040.\*\*

\*\* -On lower portion of hydro of existing AWC Stream #191-20-13400-2040, RENUMBER to AWC Stream #191-20-13400-2060.

-COMBINE/RENUMBER existing AWC Stream #191-20-13400-2040-3009 into the upper extent of AWC Stream #191-20-13400-2060.

-UPDATE/ADJUST hydrography and SHORTEN current upper extent of existing AWC Stream #191-20-13400-2030-3007.

-RENUMBER existing AWC Stream #191-20-13400-2030-3007 to AWC Stream #191-20-13400-2040-3006.

-RENUMBER existing AWC Stream #191-20-12400-2040-3007 to AWC Stream #191-20-13400-2060-3007.

-ADD new AWC Stream #191-20-13400-2040-3021 with COHO salmon REARING.

\*\*The stream number corrections address highly dynamic coastal systems that have meandered significantly, since AWC stream lines were created and the original stream nominations lacked precise gps or hydrography data for reference.

+ Please update using most recent .GDB with line, point, lake, polygon and barrier features located in C:\DS\FR5\AWC\Draft2026\GIS\Data\AWC2026\_WorkingV1\_7April2026.gdb



\*\*Important\*\* Process  
Nom #25-593 first\*\*

Map #3

Nav # 25-600



BERING  
GLACIERA-2

\*\*See Also: Nom #25-601\*\*

COs  
new UPPER

2060  
2000-0900

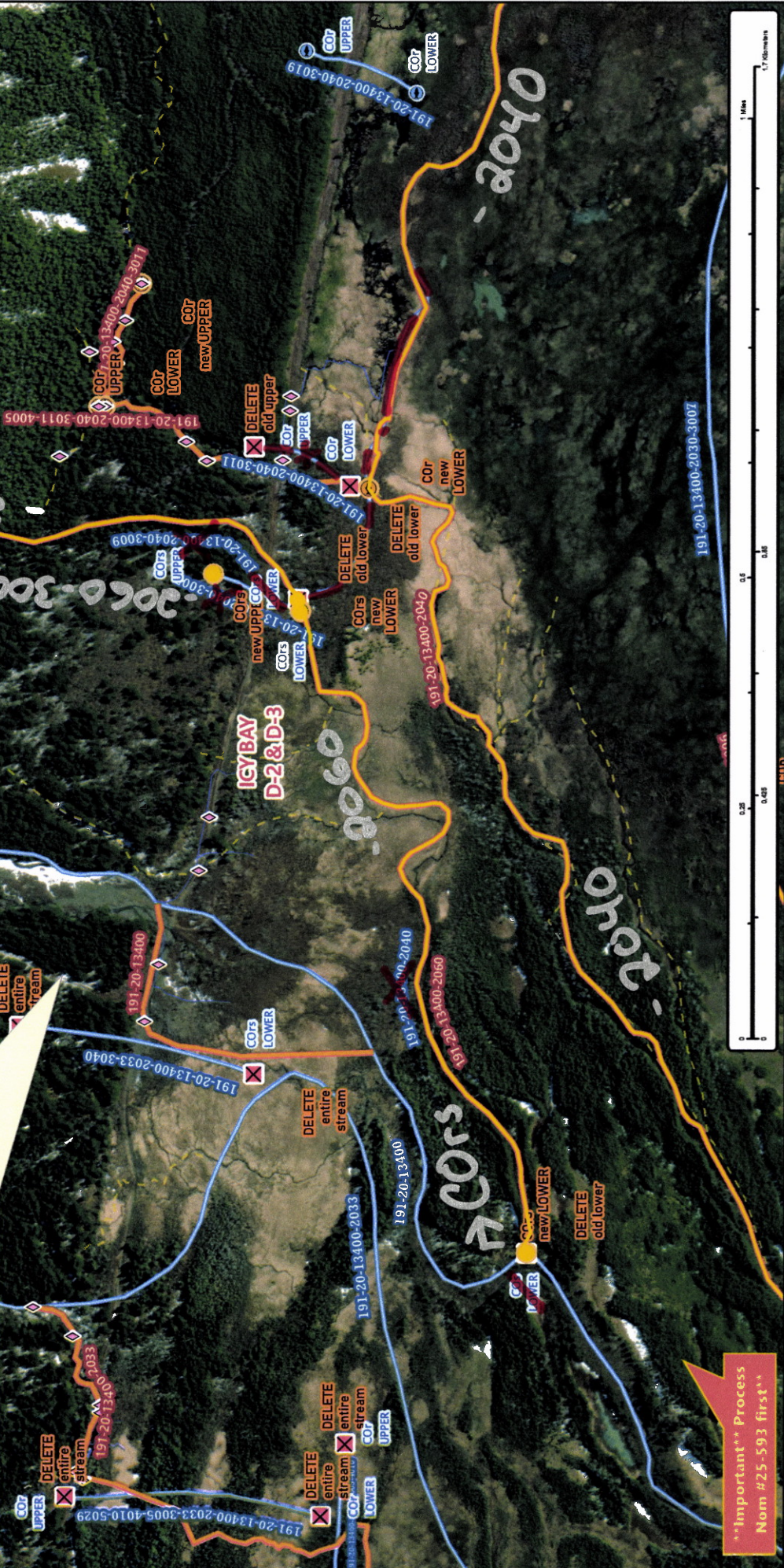
ICY BAY  
D-2&D-3

2060

COs  
new LOWER

2060

-SHORTEN current upper reach of existing AWC Stream #191-20-13400-2040.  
 -UPDATE/ADJUST hydrography and corresponding stream mouth point of existing AWC Stream #191-20-13400-2040.  
 \*\* -On lower portion of hydro of existing AWC Stream #191-20-13400-2040, RENUMBER to AWC Stream #191-20-13400-2060.  
 -COMBINE/RENUMBER existing AWC Stream #191-20-13400-2040-3009 into the upper extent of AWC Stream #191-20-13400-2060.  
 -UPDATE/ADJUST hydrography and SHORTEN current upper extent of existing AWC Stream #191-20-13400-2030-3007.  
 -RENUMBER existing AWC Stream #191-20-13400-2030-3007 to AWC Stream #191-20-13400-2040-3006.  
 -RENUMBER existing AWC Stream #191-20-12400-2040-3007 to AWC Stream #191-20-13400-2060-3007.  
 -ADD new AWC Stream #191-20-13400-2040-3021 with COHO salmon REARING.  
 \*\*The stream number corrections address highly dynamic coastal systems that have meandered significantly since AWC stream lines were created and the original stream nominations lacked precise gps or hydrography data for reference.  
 + Please update using most recent GDB with line, point, lake, polygon and barrier features located in C:\DS\FIR6\AWC\Draft\2025\GIS\Data\AWC2025\_WkngV1\_7April2025.gdb



\*\*Important\*\* Process  
Nom #25-593 first\*\*

Map #4

Nom #25-600

BERING GLACIER-2



-SHORTEN current upper reach of existing AWC Stream #191-20-13400-2040.

-UPDATE/ADJUST hydrography and corresponding stream mouth point of existing AWC Stream #191-20-13400-2040.\*\*

\*\* -On lower portion of hydro of existing AWC Stream #191-20-13400-2040, RENUMBER to AWC Stream #191-20-13400-2060.

-COMBINE/RENUMBER existing AWC Stream #191-20-13400-2040-3009 into the upper extent of AWC Stream #191-20-13400-2060.

-UPDATE/ADJUST hydrography and SHORTEN current upper extent of existing AWC Stream #191-20-13400-2030-3007.

-RENUMBER existing AWC Stream #191-20-13400-2040-3007 to AWC Stream #191-20-13400-2040-3006.

-RENUMBER existing AWC Stream #191-20-12400-2040-3007 to AWC Stream #191-20-13400-2060-3007.

-ADD new AWC Stream #191-20-13400-2040-3021 with COHO salmon REARING.

\*\*The stream number corrections address highly dynamic coastal systems that have meandered significantly since AWC stream lines were created and the original stream nominations lacked precise gps or hydrography data for reference.

+ Please update using most recent .GDB with line, point, lake, polygon and barrier features located in C:\DS\FR5\AWC\Drift2026\GISData\AWC2026\_MkKing V1\_7\_April2026.gdb

\*\*See Also: Nom #25-601\*\*



Map #5

\*\*Important\*\* Process Nom #25-593 first\*\*

Nom #25-600

2060

IGYBAY D-2&D-3  
2040  
+COU

191-20-13400-2040-3011

191-20-13400-2040-3012

191-20-13400-2040-3013

191-20-13400-2040-3014

191-20-13400-2040-3015

191-20-13400-2040-3016

191-20-13400-2040-3017

191-20-13400-2040-3018

191-20-13400-2040-3019

191-20-13400-2040-3020

191-20-13400-2040-3021

191-20-13400-2040-3022

191-20-13400-2040-3023

191-20-13400-2040-3024

191-20-13400-2040-3025

191-20-13400-2040-3026

191-20-13400-2040-3027

191-20-13400-2040-3028

191-20-13400-2040-3029

191-20-13400-2040-3030

191-20-13400-2040-3031

191-20-13400-2040-3032

191-20-13400-2040-3033

191-20-13400-2040-3034

191-20-13400-2040-3035

191-20-13400-2040-3036

191-20-13400-2040-3037

191-20-13400-2040-3038

191-20-13400-2040-3039

191-20-13400-2040-3040

191-20-13400-2040-3041

191-20-13400-2040-3042

191-20-13400-2040-3043

191-20-13400-2040-3044

191-20-13400-2040-3045

191-20-13400-2040-3046

191-20-13400-2040-3047

191-20-13400-2040-3048

191-20-13400-2040-3049

191-20-13400-2040-3050

191-20-13400-2040-3051

191-20-13400-2040-3052

191-20-13400-2040-3053

191-20-13400-2040-3054

191-20-13400-2040-3055

191-20-13400-2040-3056

191-20-13400-2040-3057

191-20-13400-2040-3058

191-20-13400-2040-3059

191-20-13400-2040-3060

191-20-13400-2040-3061

191-20-13400-2040-3062

191-20-13400-2040-3063

191-20-13400-2040-3064

191-20-13400-2040-3065

191-20-13400-2040-3066

191-20-13400-2040-3067

191-20-13400-2040-3068

191-20-13400-2040-3069

191-20-13400-2040-3070

191-20-13400-2040-3071

191-20-13400-2040-3072

191-20-13400-2040-3073

191-20-13400-2040-3074

191-20-13400-2040-3075

191-20-13400-2040-3076

191-20-13400-2040-3077

191-20-13400-2040-3078

191-20-13400-2040-3079

191-20-13400-2040-3080

191-20-13400-2040-3081

191-20-13400-2040-3082

191-20-13400-2040-3083

191-20-13400-2040-3084

191-20-13400-2040-3085

191-20-13400-2040-3086

191-20-13400-2040-3087

191-20-13400-2040-3088

191-20-13400-2040-3089

191-20-13400-2040-3090

191-20-13400-2040-3091

191-20-13400-2040-3092

191-20-13400-2040-3093

191-20-13400-2040-3094

191-20-13400-2040-3095

191-20-13400-2040-3096

191-20-13400-2040-3097

191-20-13400-2040-3098

191-20-13400-2040-3099

191-20-13400-2040-3100

191-20-13400-2040-3101

191-20-13400-2040-3102

191-20-13400-2040-3103

191-20-13400-2040-3104

191-20-13400-2040-3105

191-20-13400-2040-3106

191-20-13400-2040-3107

191-20-13400-2040-3108

191-20-13400-2040-3109

191-20-13400-2040-3110

191-20-13400-2040-3111

191-20-13400-2040-3112

191-20-13400-2040-3113

191-20-13400-2040-3114

191-20-13400-2040-3115

191-20-13400-2040-3116

191-20-13400-2040-3117

191-20-13400-2040-3118

191-20-13400-2040-3119

191-20-13400-2040-3120

191-20-13400-2040-3121

191-20-13400-2040-3122

191-20-13400-2040-3123

191-20-13400-2040-3124

191-20-13400-2040-3125

191-20-13400-2040-3126

191-20-13400-2040-3127

191-20-13400-2040-3128

191-20-13400-2040-3129

191-20-13400-2040-3130

191-20-13400-2040-3131

191-20-13400-2040-3132

191-20-13400-2040-3133

191-20-13400-2040-3134

191-20-13400-2040-3135

191-20-13400-2040-3136

191-20-13400-2040-3137

191-20-13400-2040-3138

191-20-13400-2040-3139

191-20-13400-2040-3140

191-20-13400-2040-3141

191-20-13400-2040-3142

191-20-13400-2040-3143

191-20-13400-2040-3144

191-20-13400-2040-3145

191-20-13400-2040-3146

191-20-13400-2040-3147

191-20-13400-2040-3148

191-20-13400-2040-3149

191-20-13400-2040-3150

191-20-13400-2040-3151

191-20-13400-2040-3152

191-20-13400-2040-3153

191-20-13400-2040-3154

191-20-13400-2040-3155

191-20-13400-2040-3156

191-20-13400-2040-3157

191-20-13400-2040-3158

191-20-13400-2040-3159

191-20-13400-2040-3160

191-20-13400-2040-3161

191-20-13400-2040-3162

191-20-13400-2040-3163

191-20-13400-2040-3164

191-20-13400-2040-3165

191-20-13400-2040-3166

191-20-13400-2040-3167

191-20-13400-2040-3168

191-20-13400-2040-3169

191-20-13400-2040-3170

191-20-13400-2040-3171

191-20-13400-2040-3172

191-20-13400-2040-3173

191-20-13400-2040-3174

191-20-13400-2040-3175

191-20-13400-2040-3176

191-20-13400-2040-3177

191-20-13400-2040-3178

191-20-13400-2040-3179

191-20-13400-2040-3180

191-20-13400-2040-3181

191-20-13400-2040-3182

191-20-13400-2040-3183

191-20-13400-2040-3184

191-20-13400-2040-3185

191-20-13400-2040-3186

191-20-13400-2040-3187

191-20-13400-2040-3188

191-20-13400-2040-3189

191-20-13400-2040-3190

191-20-13400-2040-3191

191-20-13400-2040-3192

191-20-13400-2040-3193

191-20-13400-2040-3194

191-20-13400-2040-3195