



State of Alaska
Department of Fish and Game
Sportfish Division

Nomination Form
Anadromous Waters Catalog

Region Southwestern USGS Quad(s) UNALASKA C-2
 Anadromous Waters Catalog Number of Water Body 302-31-10500 (-0010) -2004 (-0010; -0020; -0030); -2015 (-0010); -2017
 Name of Water Body Iliuliuk River; Unalaska Lake USGS Name Local Name
 Addition Deletion Correction Backup Information

For Office Use

Nomination #	<u>25-698</u>	<u>[Signature]</u>	<u>10/24/2025</u>
		Fisheries Scientist	Date
Revision Year:	<u>2026</u>	<u>[Signature]</u>	<u>10/24/25</u>
		Habitat Operations Manager	Date
Revision to:	<input checked="" type="checkbox"/> Atlas <input checked="" type="checkbox"/> Catalog	<u>[Signature]</u>	<u>14 Oct 2025</u>
		AWC Project Biologist	Date
Revision Code:	<u>C-9, A-2</u>	<u>[Signature]</u>	<u>10/25/2025</u>
		GIS Analyst	Date

OBSERVATION INFORMATION

Species	Date(s) Observed	Spawning	Rearing	Present	Anadromous
coho salmon (x2+)	08/24/2025		✓		✓
Dolly Varden	08/24/2025		✓		

~UPDATE/ADJUST upper hydrography of existing AWC Stream #302-31-10500 "Iliuliuk River".
 ~UPDATE/ADJUST hydrography boundary of existing AWC Lake #302-31-10500-0010 "Unalaska Lake".
 ~UPDATE/ADJUST hydrography of existing AWC Stream #302-31-10500-2004.
 ~UPDATE/ADJUST hydrography boundary of three existing AWC Lakes; #302-31-10500-2004-0010; #302-31-10500-2004-0020 and #302-31-10500-2004-0030.
 ~UPDATE/ADJUST hydrography of existing AWC Stream #302-31-10500-2015.
 ~UPDATE/ADJUST hydrography boundary of existing AWC Lake #302-31-10500-2015-0010.
 ~ADD new AWC Stream #302-31-10500-2017 with COHO salmon REARING.

Comments:
 Amber Stephens (ADFG) and I captured coho salmon and Dolly Varden using a backpack efisher and net.
 CO FLs: 111 and 74 mm (several more observed)
 DV FLs: 72 and 65 mm
 Coordinates (Lat,Long): Upper 53.849655 Lower (53.850508,-166.504708)
-166.503009

Name of Observer (please print): Josh Brekken
 Signature: 10.231.39.10 (Web Nomination) Date: 09/24/2025
 Agency: ADF&G
 Address: 333 Raspberry Road
Anchorage, AK 99518

This certifies that in my best professional judgment and belief the above information is evidence that this waterbody should be included in or deleted from the Anadromous Waters Catalog.
 Signature of Area Biologist: _____ Date: _____ Revision 3/16
 Name of Area Biologist (please print): _____

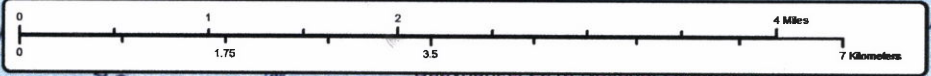




- UPDATE/ADJUST upper hydrography of existing AWC Stream #302-31-10500 "Iliulik River".
 - UPDATE/ADJUST hydrography boundary of existing AWC Lake #302-31-10500-0010 "Unalaska Lake".
 - UPDATE/ADJUST hydrography of existing AWC Stream #302-31-10500-2004.
 - UPDATE/ADJUST hydrography boundary of three existing AWC Lakes; #302-31-10500-2004-0010; #302-31-10500-2004-0020 and #302-31-10500-2004-0030.
 - UPDATE/ADJUST hydrography of existing AWC Stream #302-31-10500-2015.
 - UPDATE/ADJUST hydrography boundary of existing AWC Lake #302-31-10500-2015-0010.
 - ADD new AWC Stream #302-31-10500-2017 with COHO salmon REARING.
- + Please update using most recent .GDB with line, point, lake, polygon and barrier features located in O:\DSFR5\AWC\Draft2026\GIS\Data\AWC2026_WorkingV1_7April2025.gdb



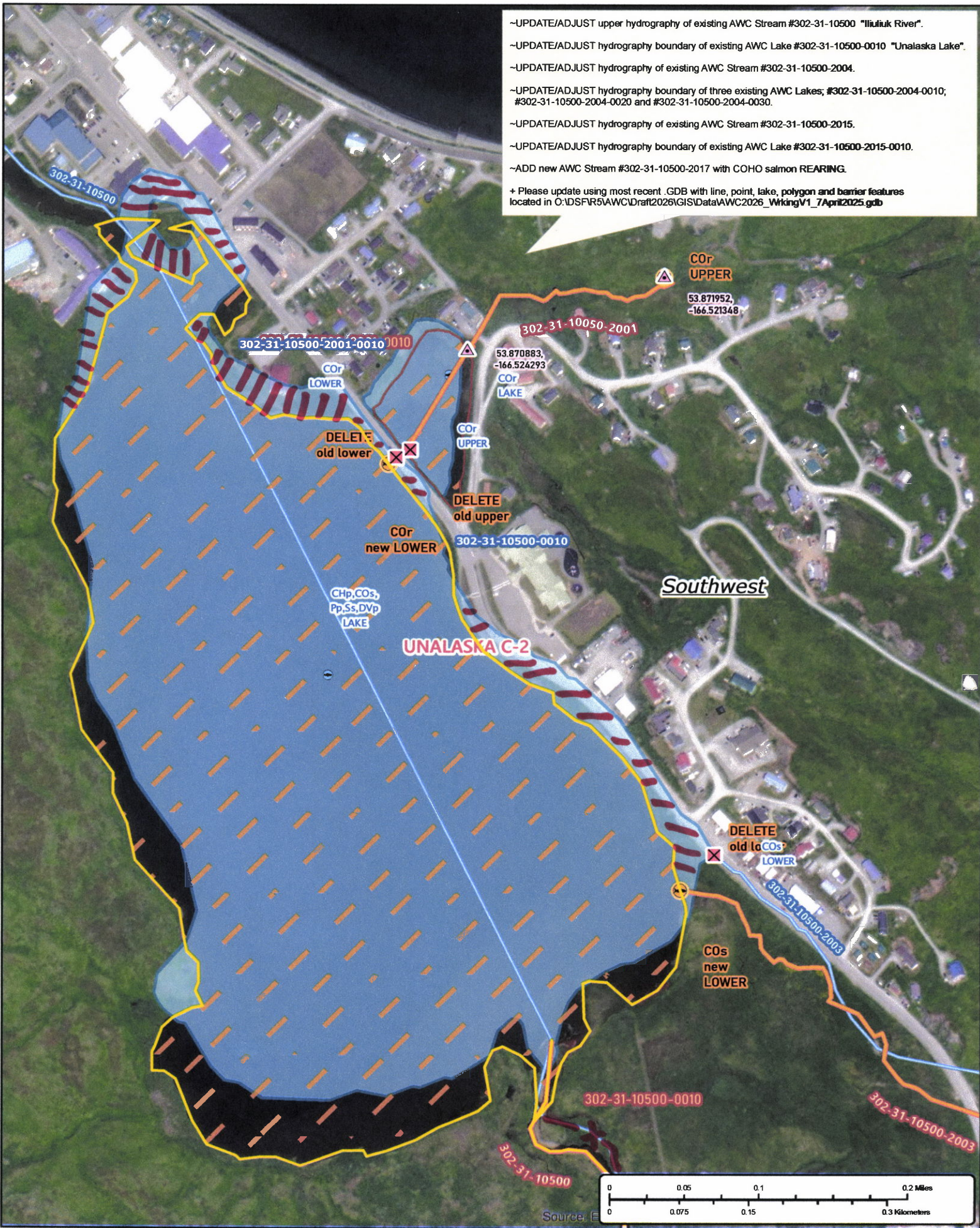
*See Also - Nrris
#25-695 through #25-700*



Nom # 25-698

Map #1

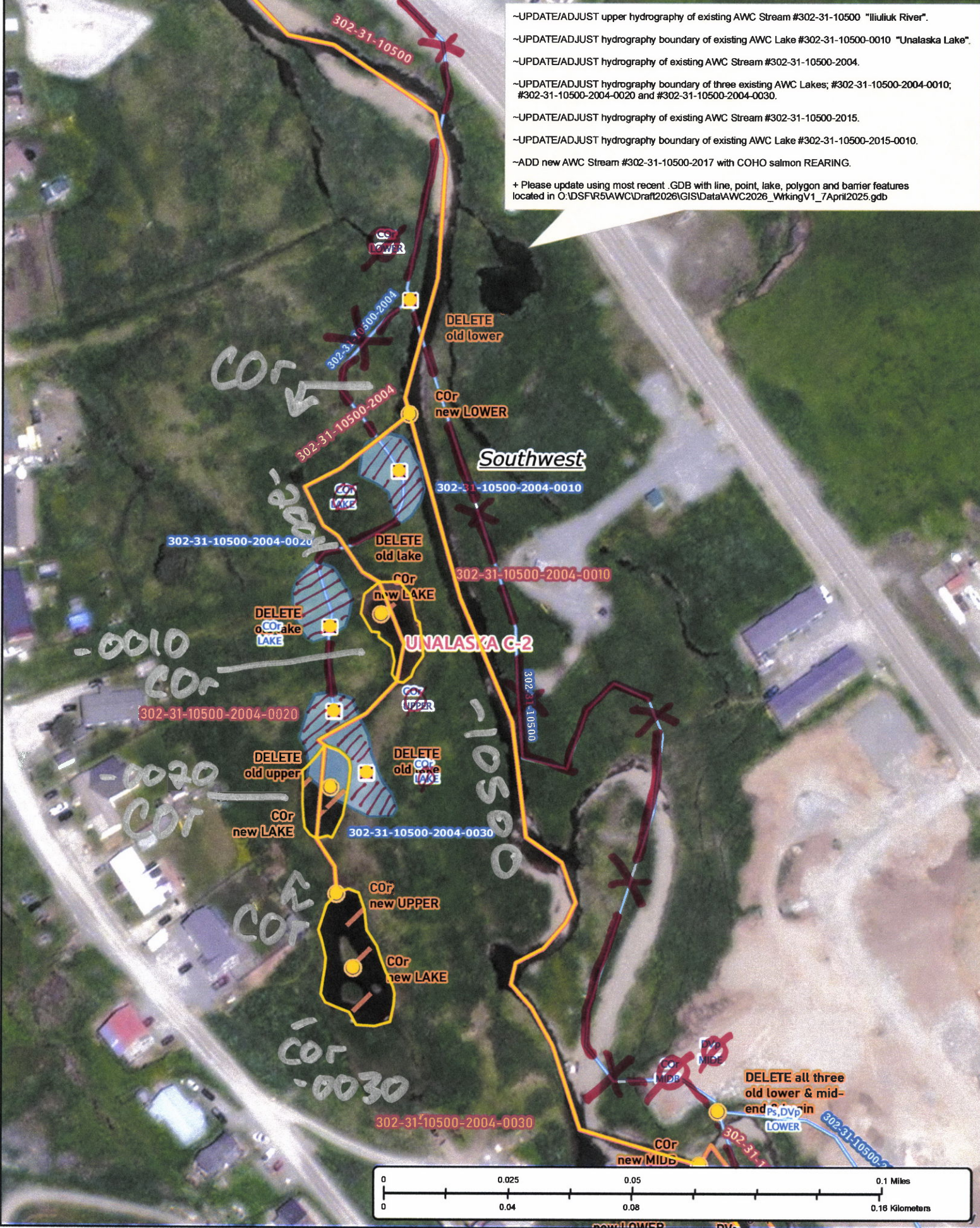
- UPDATE/ADJUST upper hydrography of existing AWC Stream #302-31-10500 "Iliulik River".
- UPDATE/ADJUST hydrography boundary of existing AWC Lake #302-31-10500-0010 "Unalaska Lake".
- UPDATE/ADJUST hydrography of existing AWC Stream #302-31-10500-2004.
- UPDATE/ADJUST hydrography boundary of three existing AWC Lakes; #302-31-10500-2004-0010; #302-31-10500-2004-0020 and #302-31-10500-2004-0030.
- UPDATE/ADJUST hydrography of existing AWC Stream #302-31-10500-2015.
- UPDATE/ADJUST hydrography boundary of existing AWC Lake #302-31-10500-2015-0010.
- ADD new AWC Stream #302-31-10500-2017 with COHO salmon REARING.
- + Please update using most recent .GDB with line, point, lake, polygon and barrier features located in C:\DSFR5\AWC\Draft2026\GIS\Data\AWC2026_WorkingV1_7April2025.gdb



Now # 25-698

Map # 3

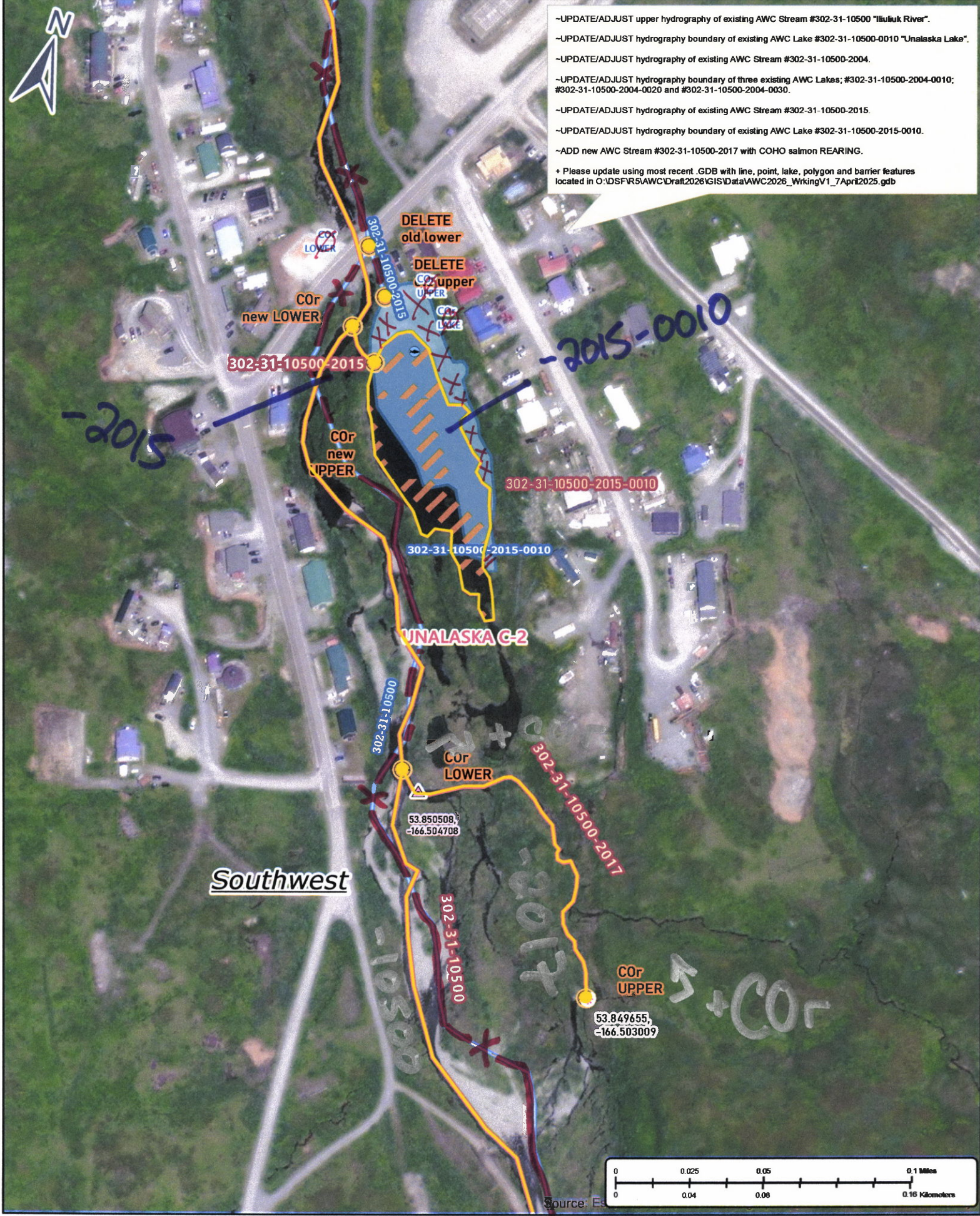
- UPDATE/ADJUST upper hydrography of existing AWC Stream #302-31-10500 "Iliulik River".
 - UPDATE/ADJUST hydrography boundary of existing AWC Lake #302-31-10500-0010 "Unalaska Lake".
 - UPDATE/ADJUST hydrography of existing AWC Stream #302-31-10500-2004.
 - UPDATE/ADJUST hydrography boundary of three existing AWC Lakes; #302-31-10500-2004-0010; #302-31-10500-2004-0020 and #302-31-10500-2004-0030.
 - UPDATE/ADJUST hydrography of existing AWC Stream #302-31-10500-2015.
 - UPDATE/ADJUST hydrography boundary of existing AWC Lake #302-31-10500-2015-0010.
 - ADD new AWC Stream #302-31-10500-2017 with COHO salmon REARING.
- + Please update using most recent .GDB with line, point, lake, polygon and barrier features located in O:\DSFR5\AWC\Draft2026\GIS\Data\AWC2026_WorkingV1_7April2025.gdb



Num #25-698

Map #4

- UPDATE/ADJUST upper hydrography of existing AWC Stream #302-31-10500 "Iliulik River".
- UPDATE/ADJUST hydrography boundary of existing AWC Lake #302-31-10500-0010 "Unalaska Lake".
- UPDATE/ADJUST hydrography of existing AWC Stream #302-31-10500-2004.
- UPDATE/ADJUST hydrography boundary of three existing AWC Lakes; #302-31-10500-2004-0010; #302-31-10500-2004-0020 and #302-31-10500-2004-0030.
- UPDATE/ADJUST hydrography of existing AWC Stream #302-31-10500-2015.
- UPDATE/ADJUST hydrography boundary of existing AWC Lake #302-31-10500-2015-0010.
- ADD new AWC Stream #302-31-10500-2017 with COHO salmon REARING.
- + Please update using most recent .GDB with line, point, lake, polygon and barrier features located in O:\DSFR5\AWC\Draft2026\GIS\Data\AWC2026_WorkingV1_7Apr2025.gdb



Nom # 25-698

Map # 5