



State of Alaska  
Department of Fish and Game  
Sportfish Division

Nomination Form  
Anadromous Waters Catalog

Region Western USGS Quad(s) BETHEL B-6, C-6, C-7, D-7

Anadromous Waters Catalog Number of Water Body 335-10-16600-2710-3010 (-4013) (-4120); (-4131); (-4171)

Name of Water Body Kwethluk River, Akulikutak River  USGS Name  Local Name

Addition  Deletion  Correction  Backup Information

For Office Use

Nomination #	<u>25-501</u>	<u>[Signature]</u>	<u>5/19/2025</u>
		Fisheries Scientist	Date
Revision Year:	<u>2026</u>	<u>[Signature]</u>	<u>5/19/25</u>
		Habitat Operations Manager	Date
Revision to:	<input checked="" type="checkbox"/> Atlas <input checked="" type="checkbox"/> Catalog	<u>[Signature]</u>	<u>1 May 2025</u>
		AWC Project Biologist	Date
Revision Code:	<u>A-2, C-9, C-7</u>	<u>[Signature]</u>	<u>6/26/2025</u>
		GIS Analyst	Date

OBSERVATION INFORMATION

Species	Date(s) Observed	Spawning	Rearing	Present	Anadromous
coho salmon	08/08/2024		✓		✓
coho salmon	08/09/2024		✓		✓
coho salmon	08/09/2024		✓		✓
coho salmon	08/09/2024		✓		✓

-ADD new AWC Stream #335-10-16600-2710-3010-4013 "Akulikutak River" with COHO salmon PRESENT and REARING.  
 -UPDATE/ADJUST hydrography segment of existing AWC Stream #335-10-16600-2710-3010 "Kwethluk Riverk".  
 -RELOCATE stream mouth point with corresponding stream line adjustment of existing AWC Stream #335-10-16600-2710-3010-4171.  
 -RELOCATE stream mouth point with corresponding stream line adjustment of existing AWC Stream #335-10-16600-2710-3010-4131.  
 -RELOCATE stream mouth point of existing AWC Stream #335-10-16600-2710-3010-4120.

Comments:

Minnow traps were deployed at two locations, 5 at the upper reach and 5 at lower reach and were fishing for approximately 1 hour at each location. Due to high water site selections were limited and not ideal. The Upper site caught 4 juvenile Coho and the lower site caught one. See Photos. Fishing locations were in back channels with low current. Each location had lots of woody debris and other cover. Due to high water turbid water we could not assess exactly each location.  
 Coordinates (Lat,Long): Upper(60.56859,-160.94101) Lower(60.57020,-160.96094)

Name of Observer (please print): aaron Moses

Signature: 10.231.39.10 (Web Nomination) Date: 10/18/2024

Agency: \_\_\_\_\_

Address: PO Box 346  
Bethel, AK 99559

This certifies that in my best professional judgment and belief the above information is evidence that this waterbody should be included in or deleted from the Anadromous Waters Catalog.

Signature of Area Biologist: \_\_\_\_\_ Date: \_\_\_\_\_ Revision 3/16

Name of Area Biologist (please print): \_\_\_\_\_



Photo 1

Nov #25-501



Photo 2

Nom #25-501



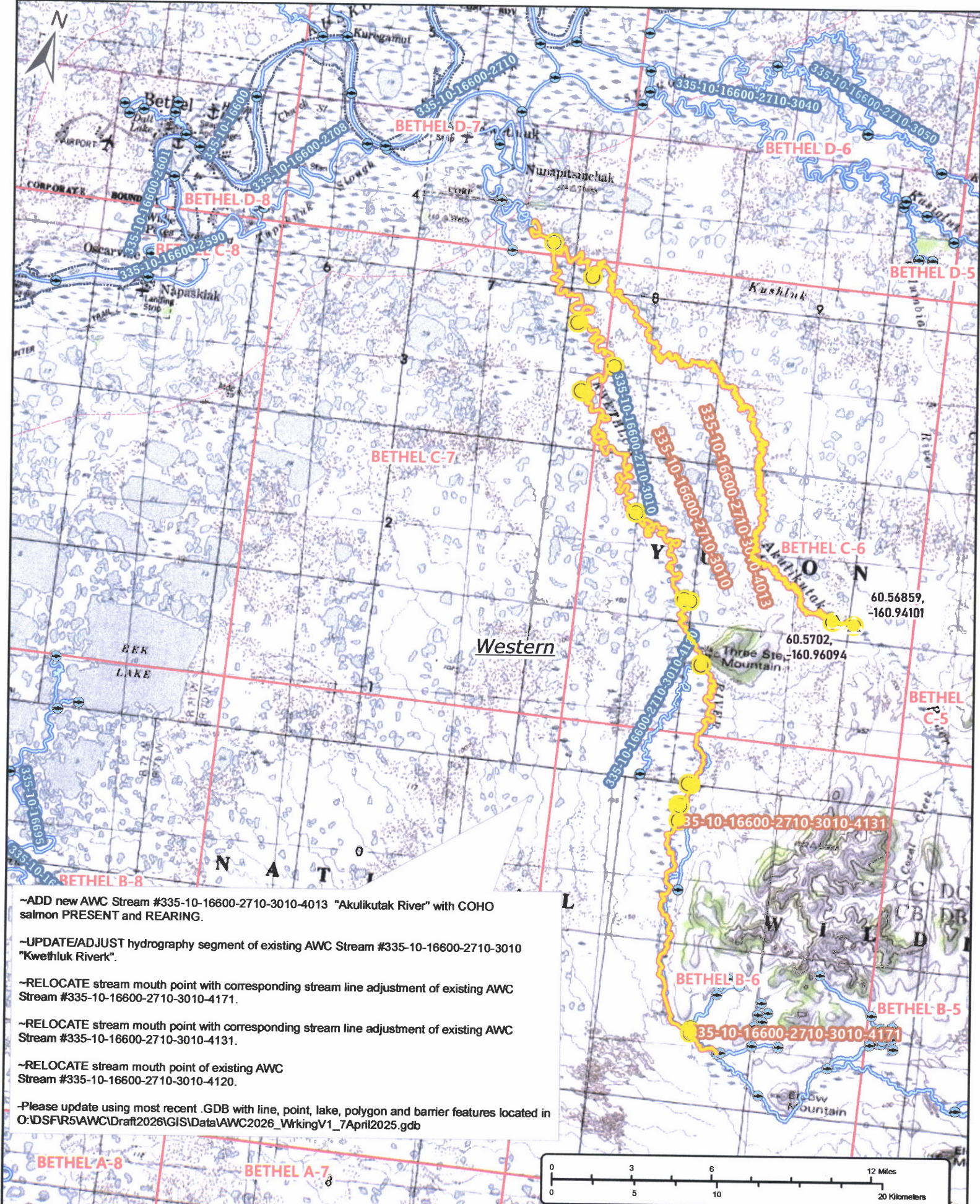
Nov # 25-501

Photo 3

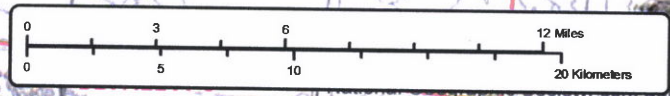


Photo 4

Nov # 25-501



- ADD new AWC Stream #335-10-16600-2710-3010-4013 "Akulikutak River" with COHO salmon PRESENT and REARING.
  - UPDATE/ADJUST hydrography segment of existing AWC Stream #335-10-16600-2710-3010 "Kwehluh River".
  - RELOCATE stream mouth point with corresponding stream line adjustment of existing AWC Stream #335-10-16600-2710-3010-4171.
  - RELOCATE stream mouth point with corresponding stream line adjustment of existing AWC Stream #335-10-16600-2710-3010-4131.
  - RELOCATE stream mouth point of existing AWC Stream #335-10-16600-2710-3010-4120.
- Please update using most recent .GDB with line, point, lake, polygon and barrier features located in O:\DS\FIR5\AWC\Draft2026\GIS\Data\AWC2026\_WrkingV1\_7April2025.gdb



Nom # 25-501

Map # 1

~ADD new AWC Stream #335-10-16600-2710-3010-4013 "Akulikutak River" with COHO salmon PRESENT and REARING.

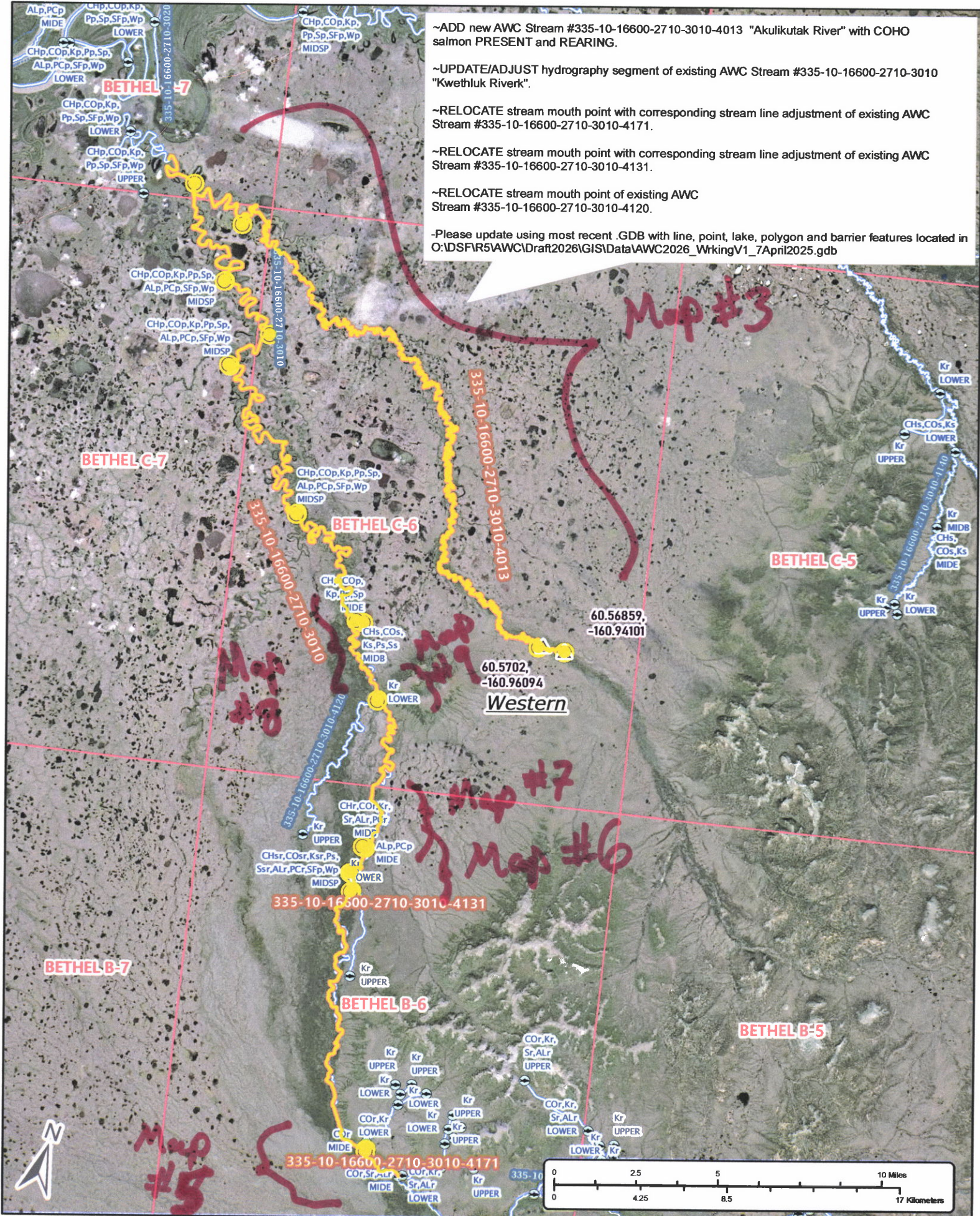
~UPDATE/ADJUST hydrography segment of existing AWC Stream #335-10-16600-2710-3010 "Kwethluk River".

~RELOCATE stream mouth point with corresponding stream line adjustment of existing AWC Stream #335-10-16600-2710-3010-4171.

~RELOCATE stream mouth point with corresponding stream line adjustment of existing AWC Stream #335-10-16600-2710-3010-4131.

~RELOCATE stream mouth point of existing AWC Stream #335-10-16600-2710-3010-4120.

~Please update using most recent .GDB with line, point, lake, polygon and barrier features located in O:\DS\FIR5\AWC\Draft2026\GIS\Data\AWC2026\_WrkingV1\_7April2025.gdb



Now #25-501

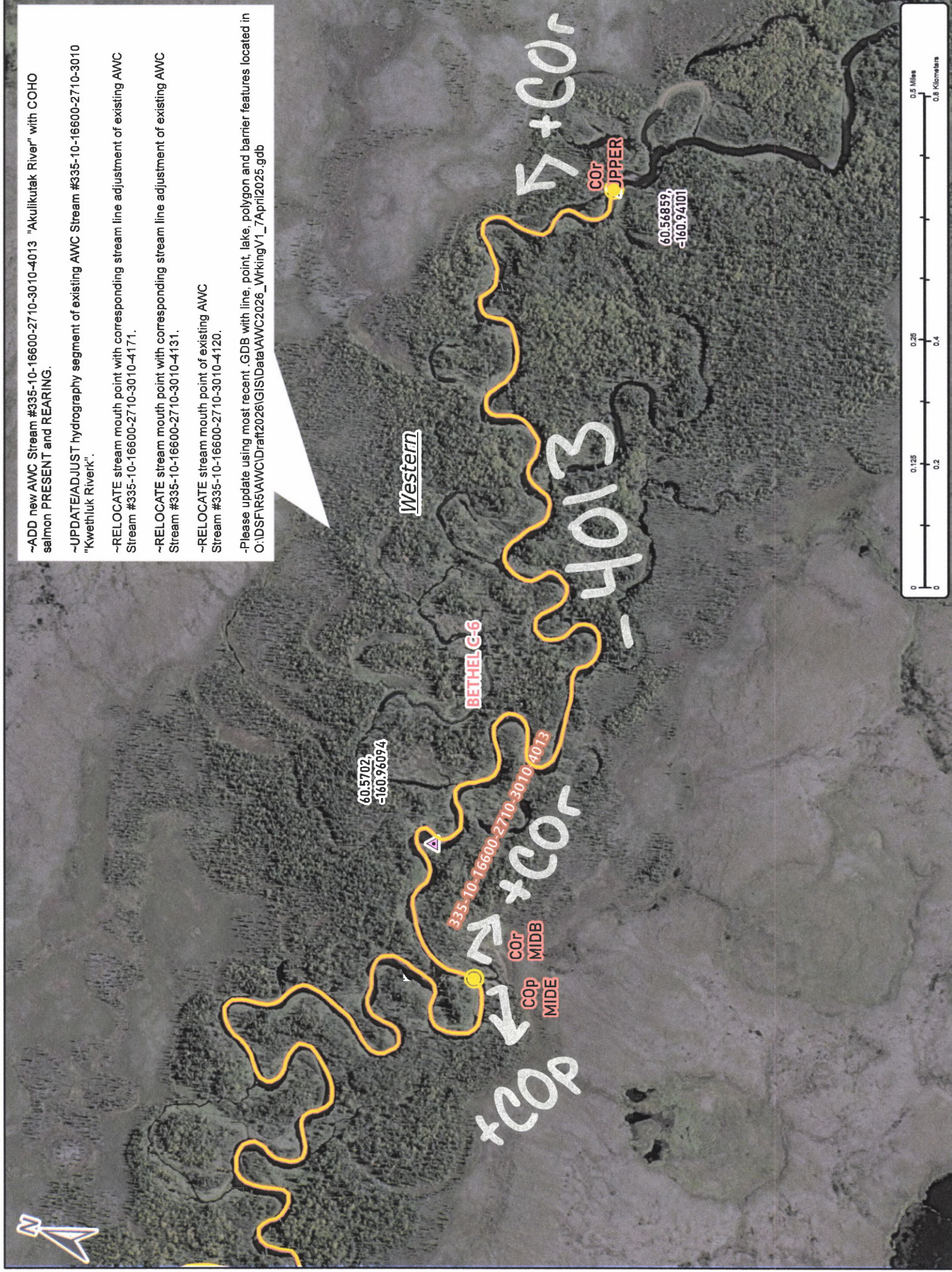
Map #2





- ADD new AWC Stream #335-10-16600-2710-3010-4013 "Akulikatak River" with COHO salmon PRESENT and REARING.
- UPDATE/ADJUST hydrography segment of existing AWC Stream #335-10-16600-2710-3010 "Kwethluk River".
- RELOCATE stream mouth point with corresponding stream line adjustment of existing AWC Stream #335-10-16600-2710-3010-4171.
- RELOCATE stream mouth point with corresponding stream line adjustment of existing AWC Stream #335-10-16600-2710-3010-4131.
- RELOCATE stream mouth point of existing AWC Stream #335-10-16600-2710-3010-4120.

-Please update using most recent .GDB with line, point, lake, polygon and barrier features located in O:\DSFIR5\AWC\Draft\2026\GIS\Data\AWC2026\_WorkingV1\_7April2025.gdb



Nov # 25-501

Map # 4



~ADD new AWC Stream #335-10-16600-2710-3010-4013 "Akulikutak River" with COHO salmon PRESENT and REARING.

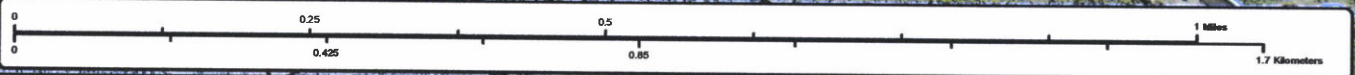
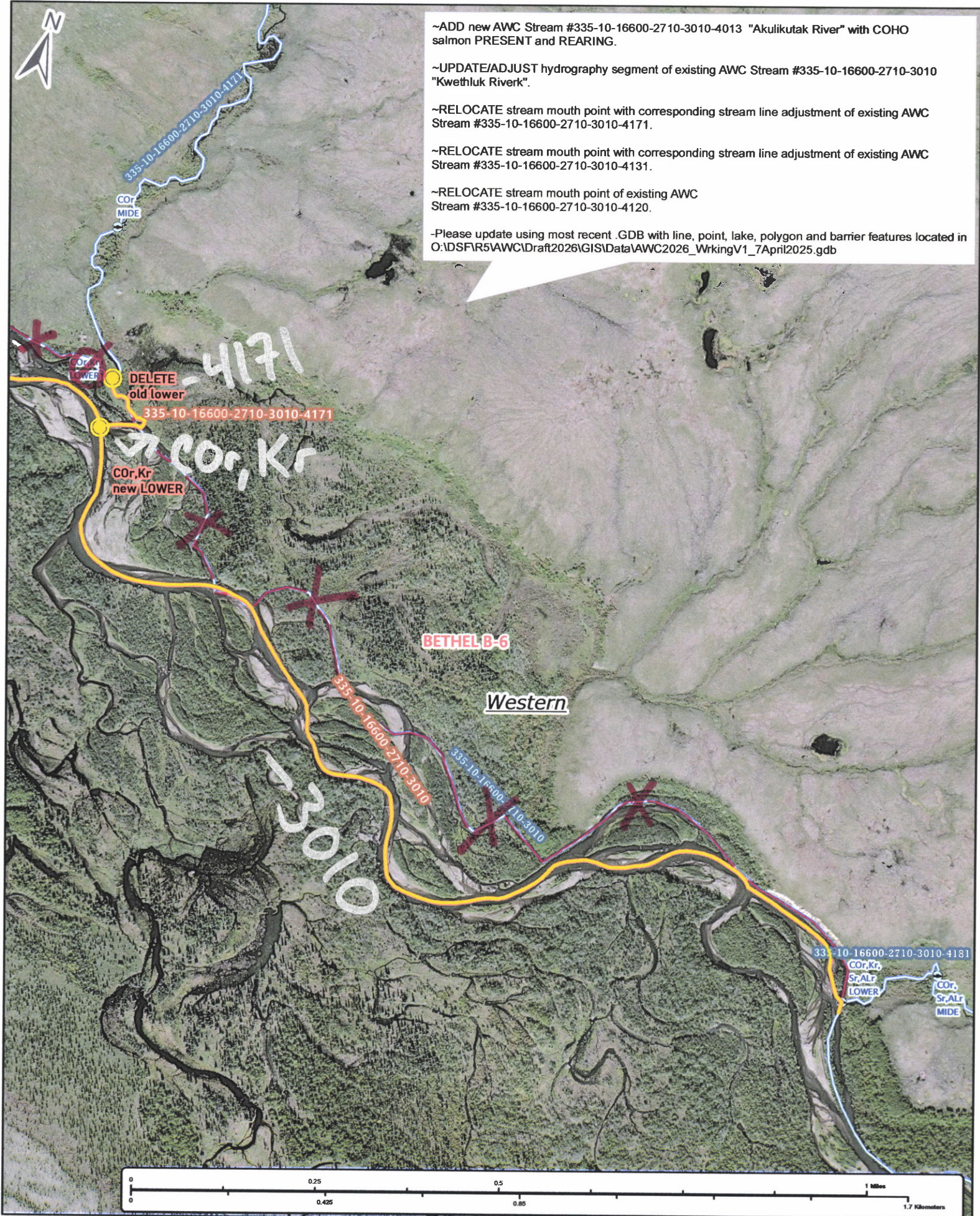
~UPDATE/ADJUST hydrography segment of existing AWC Stream #335-10-16600-2710-3010 "Kwethluk Riverk".

~RELOCATE stream mouth point with corresponding stream line adjustment of existing AWC Stream #335-10-16600-2710-3010-4171.

~RELOCATE stream mouth point with corresponding stream line adjustment of existing AWC Stream #335-10-16600-2710-3010-4131.

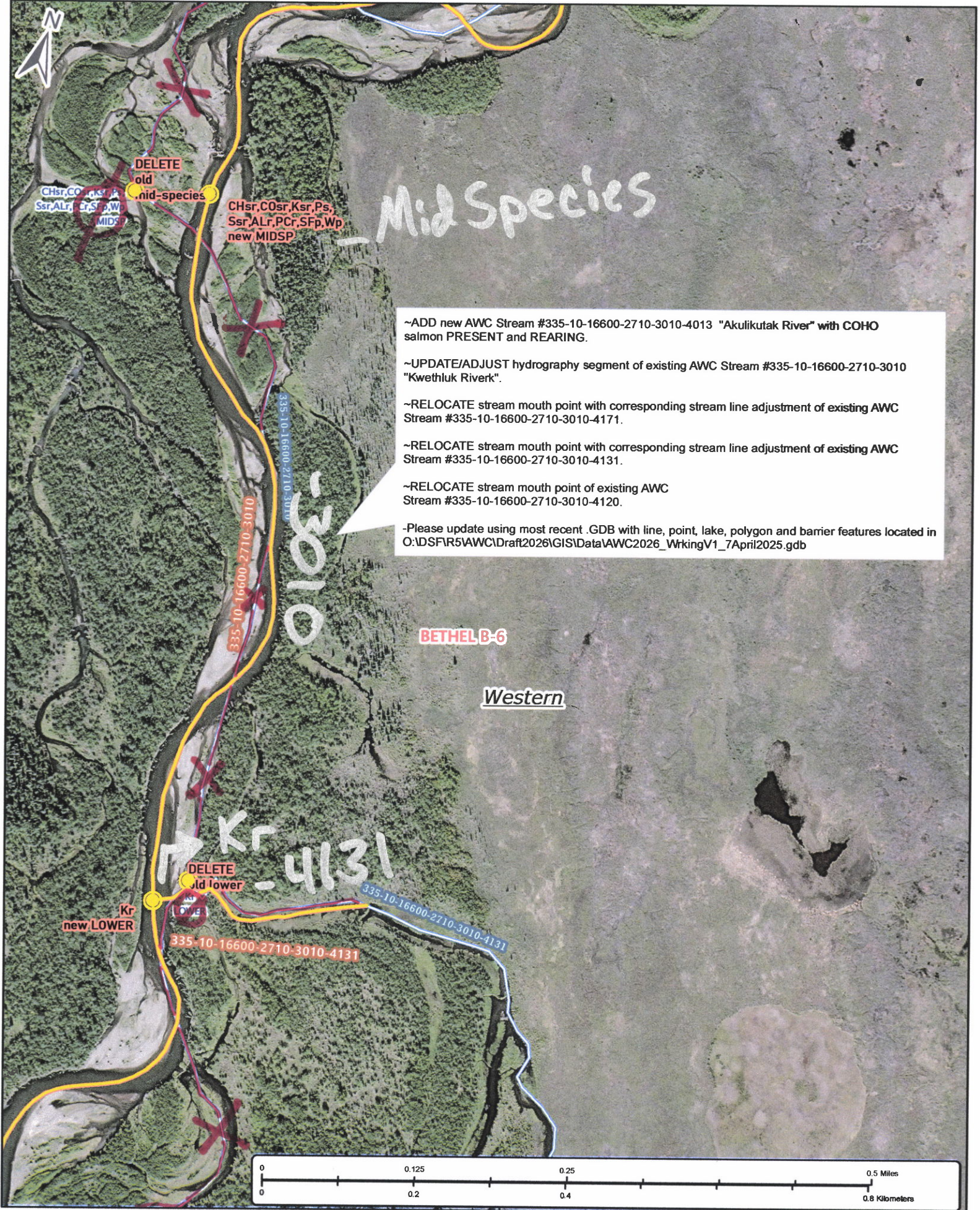
~RELOCATE stream mouth point of existing AWC Stream #335-10-16600-2710-3010-4120.

~Please update using most recent .GDB with line, point, lake, polygon and barrier features located in O:\DSFR5\AWC\Draft2026\GIS\Data\AWC2026\_WrkingV1\_7April2025.gdb



Nov #25-501

Map #5



Mid Species

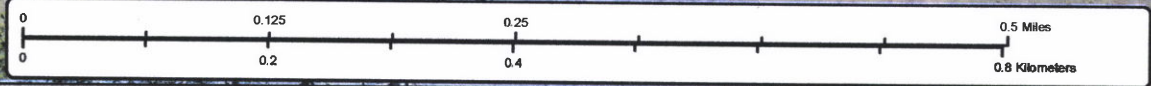
3010

BETHEL B-6

Western

Kr 4131

- ~ADD new AWC Stream #335-10-16600-2710-3010-4013 "Akulikutak River" with COHO salmon PRESENT and REARING.
- ~UPDATE/ADJUST hydrography segment of existing AWC Stream #335-10-16600-2710-3010 "Kwethluk Riverk".
- ~RELOCATE stream mouth point with corresponding stream line adjustment of existing AWC Stream #335-10-16600-2710-3010-4171.
- ~RELOCATE stream mouth point with corresponding stream line adjustment of existing AWC Stream #335-10-16600-2710-3010-4131.
- ~RELOCATE stream mouth point of existing AWC Stream #335-10-16600-2710-3010-4120.
- ~Please update using most recent .GDB with line, point, lake, polygon and barrier features located in O:\DSF\5\AWC\Draft2026\GIS\Data\AWC2026\_WrkingV1\_7April2025.gdb



Now # 25-501

Map #6

~ADD new AWC Stream #335-10-16600-2710-3010-4013 "Akulikutak River" with COHO salmon PRESENT and REARING.

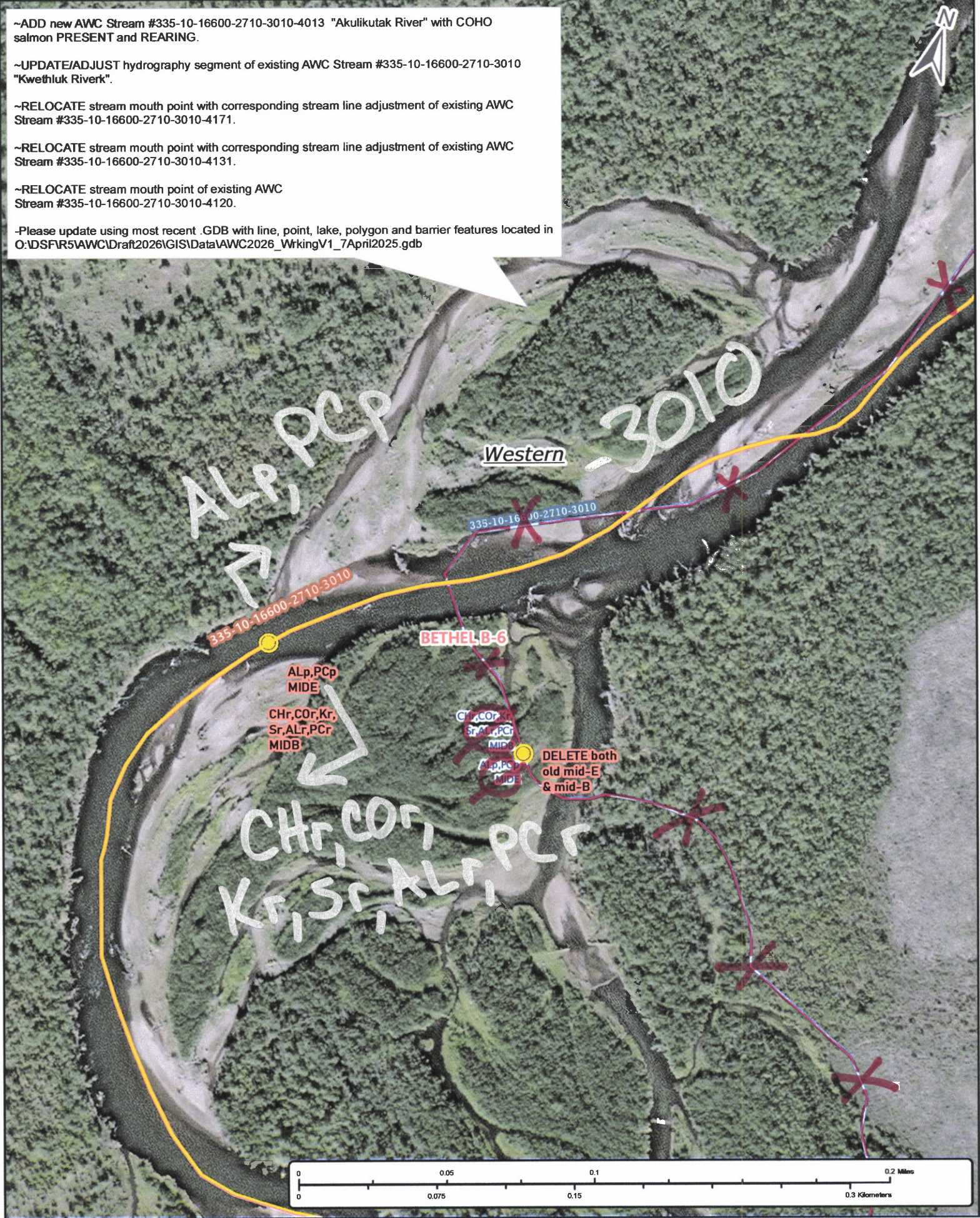
~UPDATE/ADJUST hydrography segment of existing AWC Stream #335-10-16600-2710-3010 "Kwethluk River".

~RELOCATE stream mouth point with corresponding stream line adjustment of existing AWC Stream #335-10-16600-2710-3010-4171.

~RELOCATE stream mouth point with corresponding stream line adjustment of existing AWC Stream #335-10-16600-2710-3010-4131.

~RELOCATE stream mouth point of existing AWC Stream #335-10-16600-2710-3010-4120.

~Please update using most recent .GDB with line, point, lake, polygon and barrier features located in O:\DSFR5\AWC\Draft2026\GIS\Data\AWC2026\_WrkingV1\_7April2025.gdb



Dom # 25-501

Map # 7

~ADD new AWC Stream #335-10-16600-2710-3010-4013 "Akulikutak River" with COHO salmon PRESENT and REARING.

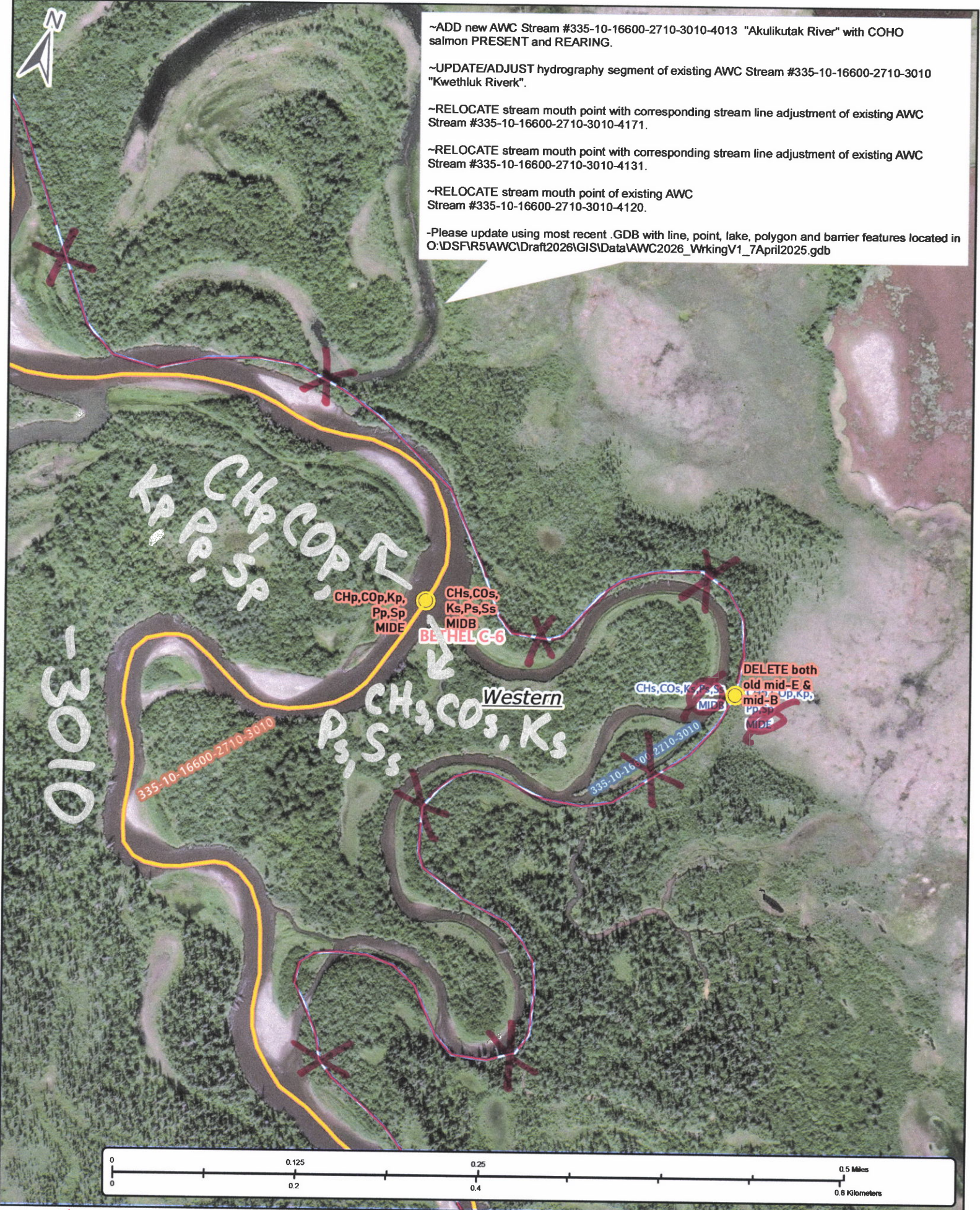
~UPDATE/ADJUST hydrography segment of existing AWC Stream #335-10-16600-2710-3010 "Kwethluk Riverk".

~RELOCATE stream mouth point with corresponding stream line adjustment of existing AWC Stream #335-10-16600-2710-3010-4171.

~RELOCATE stream mouth point with corresponding stream line adjustment of existing AWC Stream #335-10-16600-2710-3010-4131.

~RELOCATE stream mouth point of existing AWC Stream #335-10-16600-2710-3010-4120.

-Please update using most recent .GDB with line, point, lake, polygon and barrier features located in O:\DSFR5\AWC\Draft2026\GIS\Data\AWC2026\_WrkingV1\_7April2025.gdb



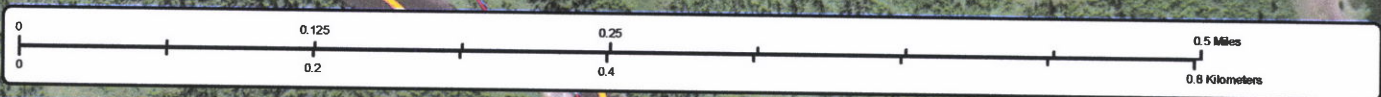
-3010

335-10-16600-2710-3010

335-10-16600-2710-3010

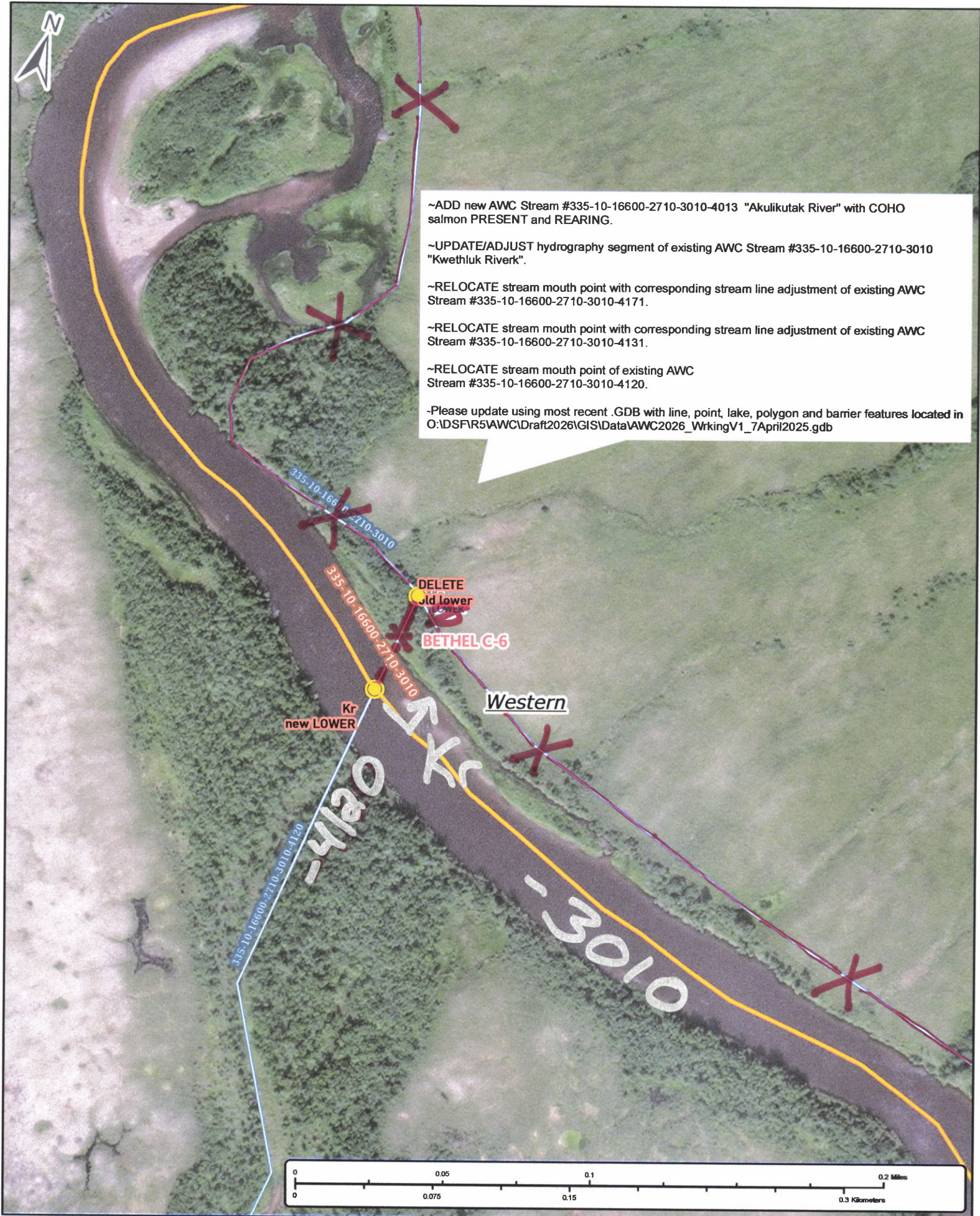
Western

DELETE both old mid-E & mid-B



Nov #25-501

Map #8



~ADD new AWC Stream #335-10-16600-2710-3010-4013 "Akulikutak River" with COHO salmon PRESENT and REARING.

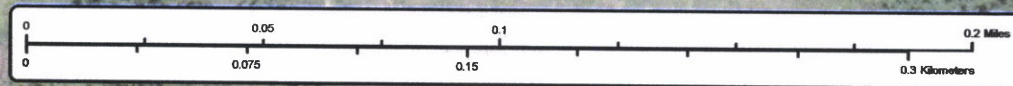
~UPDATE/ADJUST hydrography segment of existing AWC Stream #335-10-16600-2710-3010 "Kwethluk River".

~RELOCATE stream mouth point with corresponding stream line adjustment of existing AWC Stream #335-10-16600-2710-3010-4171.

~RELOCATE stream mouth point with corresponding stream line adjustment of existing AWC Stream #335-10-16600-2710-3010-4131.

~RELOCATE stream mouth point of existing AWC Stream #335-10-16600-2710-3010-4120.

-Please update using most recent .GDB with line, point, lake, polygon and barrier features located in O:\DSF\R5\AWC\Draft2026\GIS\Data\AWC2026\_WrkingV1\_7April2025.gdb



Nom # 25-501

Map #9