



FISH HABITAT PERMIT

FH26-III-0016-GP

ISSUED: March 10, 2026
EXPIRES: December 31, 2030

GENERAL PUBLIC

RE: **Motorized Vehicle Stream Crossing at Traditional Ford Locations
Southwestern Seward Peninsula
Imuruk Basin - Niukluk River - Northwest Norton Sound Drainages**

Pursuant to AS 16.05.871(b) (Anadromous Fish Act), the Alaska Department of Fish and Game (ADF&G), Habitat Section has determined that both the public interest and protection of fish and wildlife will be served with the issuance of this General Public Fish Habitat Permit authorizing the use of wheeled or tracked motorized **vehicles with a gross vehicle weight (GVWR) of 10,000 pounds or less** to cross the described waterbodies within a 500-foot centerline of the referenced crossing sites, previously authorized under Fish Habitat Permit FH16-III-0182-GP Amendment 2.

Note 1: An individual Fish Habitat Permit is required for use of larger vehicles/equipment at the described crossing sites, or any use within the remaining catalogued extent of these waterbodies or other waterbodies catalogued as anadromous not described herein.

Note 2: For more information about the RS2477 ROW trail system depicted by the black dashed lines visit the following Alaska Department of Natural Resources website: [RS 2477 Trails Project – Alaska Division of Mining, Land, and Water](#)

Anadromous Fish Act

The described waterbodies have been specified as being important for the spawning, rearing, or migration of anadromous fishes pursuant to AS 16.05.871(a). The waterbodies provide habitat for a combination of salmon species and life stages, anadromous whitefish, and/or anadromous Dolly Varden, and all systems support resident species of fish such as Arctic grayling. Use of the described crossings should not have adverse effects on anadromous fish or their habitat and should not obstruct the free passage of fish.

In accordance with AS 16.05.871(d), crossings are authorized subject to the permit terms with the following stipulations:

- 1) Summer stream crossings with vehicles and ATVs shall be made from bank to bank in a direction substantially perpendicular to the direction of stream flow to the extent practicable. Equipment crossings shall be made in a manner that precludes the creation of barriers to efficient fish passage (ridging and/or rutting of streambed). No modifications to the banks of streams are authorized via this permit.
- 2) Winter stream crossings shall occur when and where the ice is naturally frozen to the streambed or in areas where ice thickness is adequate to support equipment. Vehicles shall not enter open water during winter. Construction of snow/ice bridges or ramps is not authorized via this permit.

Permit Terms

This letter constitutes a permit issued under the authority of AS 16.05.871. Please be advised that this determination applies only to activities regulated by the Habitat Section of ADF&G; other agencies also may have jurisdiction under their respective authorities. This determination does not relieve you of your responsibility to secure other permits; state, federal, or local. You are still required to comply with all other applicable laws.

You are responsible for the actions of contractors, agents, or other persons who perform work to accomplish the approved project. For any activity that significantly deviates from the approved plan, you shall notify the ADF&G Habitat Section and obtain written approval in the form of a permit amendment before beginning the activity. Any action that increases the project's overall scope or that negates, alters, or minimizes the intent or effectiveness of any provision contained in this permit will be deemed a significant deviation from the approved plan. The final determination as to the significance of any deviation and the need for a permit amendment is the responsibility of the ADF&G Habitat Section. Therefore, it is recommended that you consult the Habitat Section before considering any deviation from the approved plan.

You shall give an authorized representative of the state free and unobstructed access to the permit site, at safe and reasonable times, for the purpose of inspecting or monitoring compliance with any provision of this permit. You shall furnish whatever assistance and information the authorized representative reasonably requires for monitoring and inspection purposes.

In addition to the penalties provided by law, this permit may be terminated or revoked for failure to comply with its provisions or failure to comply with applicable statutes and regulations. You shall mitigate any adverse effect upon fish or wildlife, their habitats, or any restriction or interference with public use that the commissioner determines was a direct result of your failure to comply with this permit or any applicable law.

You shall indemnify, save harmless, and defend the department, its agents, and its employees from any and all claims, actions, or liabilities for injuries or damages sustained by any person or property arising directly or indirectly from permitted activities or your performance under this permit. However, this provision has no effect if, and only if, the sole proximate cause of the injury is the department's negligence.

You may appeal this permit decision relating to AS 16.05.871 in accordance with the provisions of AS 44.62.330-630.

Please direct questions about this permit to Habitat Biologist Todd Nichols at 907-459-7363 or todd.nichols@alaska.gov.

Sincerely,
Doug Vincent-Lang
Commissioner


For Audra Brase

BY: Audra L. J. Brase, Regional Supervisor
Habitat Section
Alaska Department of Fish and Game

Enc: Figs. 1-11. Maps showing crossing points

ecc: Brendan Scanlon, ADF&G SF, Fairbanks
Dave Stoller, ADF&G SF, Fairbanks
Kevin Clark, ADF&G CF, Nome
Sara Henslee, ADF&G WC, Nome
Dianna Leinberger, ADNRLand, Fairbanks
USFWS, Alaska Region
NOAA Fisheries, HCD, Anchorage
AWT, Northern Detachment, Fairbanks
Permit Coordinator, ADF&G SF
Al Ott, ADF&G HAB, Fairbanks

tn/AB

Access From Nome-Teller Highway

Figure 1

Bluestone River Drainage

Bluestone River (Right Fork) (Stream No. 332-00-10320-2100)
Sec 34, T4S, R37W, KRM, Teller A-3 (Near Skookum Creek)
Crossing Coordinate (WGS84): 65.1005 N, 166.2524 W

Gold Run Creek (Stream No. 332-00-10320-2101)

At McDame & Alder Creeks (Sullivan Camp)
Sec 8, T5S, R37W
Crossing Coordinates (WGS84): 65.0668 N, 166.2010 W
65.0642 N, 166.1970 W

Tisuk River Drainage

McAdam Creek (Stream No. 333-00-10320-2101)
Sec 4, T6S, R37W, KRM, Nome D-3
Crossing Coordinate (WGS84): 64.9914 N, 166.1740 W

Eldorado Creek (Stream No. 333-10-10378-2060)

Sec 20, T6S, R37W
Crossing Coordinate (WGS84): 64.9590 N, 166.2024 W

Figure 2

Sinuk River (Stream No. 333-10-10700)

Near Mouth Above Mean Low Tide
Sec 27, T10S, R38W, KRM, Nome C-3
Crossing Coordinate (WGS84): 64.5896 N, 166.2498 W

Cripple River Drainage

Cripple River (Stream No. 333-10-10900)
Near Mouth Above Mean Low Tide
Sec 12-13, T11S, R36W, KRM, Nome C-2
Crossing Coordinates (WGS84): 64.5399 N, 165.8024 W
64.5422 N, 165.7899 W

Unnamed Tributary (Stream No. 333-10-10900-2004) and
Bowhead Creek (Stream No. 333-10-10900-2008)

Both at Confluence with Cripple River, Sec 12, T11S, R36W
Crossing Coordinates (WGS84): 64.5464 N, 165.7760 W
64.5560 N, 165.7772 W

Arctic Creek (Stream No. 333-10-10900-2018)

Near Confluence with Cripple River, Sec 23, T10S, R36W
Crossing Coordinate (WGS84): 64.6040 N, 165.8187 W and
Upstream from Cripple River, Sec 7-8, T10S, R35W
Crossing Coordinates (WGS84): 64.6326 N, 165.7488 W
64.6360 N, 165.7412 W

64.6392 N, 165.7297 W

Unnamed Tributaries (Stream No. 333-10-10900-2022 and 2026)
Upstream of Arctic Creek, Sec 22 and 15, T10S, R36W
Crossing Coordinates (WGS84): 64.6110 N, 165.8414 W
64.6171 N, 165.8605 W

Stella Creek (Stream No. 333-10-10900-2040)
Sec 2, T10S, R36W
Crossing Coordinate (WGS84): 64.6550 N, 165.8344 W

Cleveland Creek (Stream No. 333-10-10900-2050)
Sec 31, T9S, R35W
Crossing Coordinate (WGS84): 64.6672 N, 165.7618 W

Penny River (Stream No. 333-10-10950)
Near Mouth Above Mean Low Tide
Sec 18, T11S, R35W
Crossing Coordinate (WGS84): 64.5378 N, 165.7405 W

Access From Snake River Road

Figure 3

Lower Snake River Drainage

Snake River (Stream No. 333-10-11200)
At Bangor Creek, Sec 34, T9S, R34W
Crossing Coordinate (WGS84): 64.6706 N, 165.4358 W

Boulder Creek (Stream No. 333-10-11200-2133) and
Twin Mountain Creek (Stream No. 333-10-11200-2133-3024)
At their confluence and downstream along Boulder Creek
Sec 5 and 9, T10S, R34W
Crossing Coordinates (WGS84): 64.6508 N, 165.5128 W
64.6475 N, 165.5075 W
64.6404 N, 165.4929 W

Monument Creek (Stream No. 333-10-11200-2107)
~1 mile from Snake River, Sec 29, T10S, R34W, KRM, Nome C-2
Crossing Coordinate (WGS84): 64.5975 N, 165.5078 W

Glacier Creek (Stream No. 333-10-11200-2110)
Multiple Crossings along access road
Sec 26-27, T10S, R34W, KRM, Nome C-1
Crossing Coordinate Range (WGS84): 64.5975 N, 165.4610 W To
64.5972 N, 165.4080 W

Snake River between Glacier and Rock Creeks, Sec 27, T10S, R34W
Crossing Coordinate (WGS84): 64.5990 N, 165.4656 W

Figure 4

Upper Snake River Drainage

Divining Creek (Stream No. 333-10-11200-2138)

Sec 35, T9S, R34W

Crossing Coordinate (WGS84): 64.6588 N, 165.4266 W

Borg Creek (Stream No. 333-10-11200-2150)

Sec 25, T9S, R34W

Crossing Coordinate (WGS84): 64.6588 N, 165.4266 W

Grub Gulch (Stream No. 333-10-11200-2160-3010)

Sec 12, T9S, R34W

Crossing Coordinate (WGS84): 64.7225 N, 165.3916 W

Grouse Creek (Stream No. 333-10-11200-2160-3014)

Sec 12, T9S, R34W

Crossing Coordinate (WGS84): 64.6764 N, 165.3949 W

Steep Creek (Stream No. 333-10-11200-2160-3028-4010)

Sec 32, T8S, R33W

Crossing Coordinate (WGS84): 64.7470 N, 165.3982 W

Silver Creek (Stream No. 333-10-11200-2160-3028)

Sec 32, T8S, R33W

Crossing Coordinate (WGS84): 64.7473 N, 165.3985 W

Goldbottom Creek (Stream No. 333-10-11200-2160)

Sec 25, T8S, R34W, KRM, Nome C-1, D-1

Crossing Coordinate (WGS84): 64.7696 N, 165.4535 W

Access From Nome-Taylor Highway

Figure 3

Lower Nome River Drainage

Nome River (Stream No. 333-10-11250)

Above Osborn Creek, Sec 11, T11S, R33W, KRM, Nome C-1

Crossing Coordinate (WGS84): 64.5499 N, 165.2167 W

Confluence of Buster Creek, Sec 27, T11S, R33W

Crossing Coordinate (WGS84): 64.5870 N, 165.2674 W

Buster Creek (Stream No. 333-10-11250-2068)

Sec 27, T10S, R33W

Crossing Coordinates (WGS84): 64.5920 N, 165.2494 W
64.5996 N, 165.2458 W

Figure 5

Upper Nome River Drainage

Nome River (Stream No. 333-10-11250)

Below Sampson Creek, Sec 9, T9S, R33W, Nome C-1

Crossing Coordinate (WGS84): 64.7191 N, 165.2952 W

At Hobson Creek (Stream No. 333-10-11250-2097)

Sec 4, T9S, R33W

Crossing Coordinates (WGS84): 64.7307 N, 165.2792 W

64.7314 N, 165.2699 W

At Clara Creek, Sec 30, T8S, R32W, Nome D-1

Crossing Coordinate (WGS84): 64.7696 N, 165.2216 W

At Dorothy Creek, Sec 6, T8S, R32W

Crossing Coordinate (WGS84): 64.8244 N, 165.2321 W

At & Above Divide Creek, Sec 25 & 36, T7S, R33W

Crossing Coordinates (WGS84): 64.8390 N, 165.2658 W

64.8552 N, 165.2688 W

Figure 6

Pilgrim River Drainage

Pilgrim River (Stream No. 332-00-10250-2110)

Between Big and Homestake Creeks, Sec 22, T6S, R30W, KRM, Solomon D-6

Crossing Coordinate (WGS84): 64.9593 N, 164.7211 W

Upstream of Iron Creek, Sec 13

Crossing Coordinate (WGS84): 64.9690 N, 164.6572 W

Iron Creek (Stream No. 332-00-10250-2110-3500)

Sec 13, T6S, R30W

Crossing Coordinates (WGS84): 64.9722 N, 164.6448 W

64.9618 N, 164.6440 W

At Babs and Eagle Creeks, Sec 35

Crossing Coordinate (WGS84): 64.9208 N, 164.6907 W

Near Rabbit and Dome Creeks, Sec 10-11, T7S

Crossing Coordinate (WGS84): 64.9003 N, 164.7088 W

Figure 7

Lower Kougarok River Drainage

Kougarok River (Stream No. 332-00-10250-2285)

Near Ryan Gulch and Kougarok Landing Strip

Sec 16, T1S, R29W, KRM, Bendeleben B-6

Crossing Coordinate (WGS84): 65.4065 N, 164.6424 W

At Niagara Creek, Sec 9
Crossing Coordinate (WGS84): 65.4199 N, 164.6440 W

Near Windy and Neva Creeks, Sec 28, T1N, R29W
Crossing Coordinate (WGS84): 65.4614 N, 164.6948 W

Figure 8

Upper Kougarok River Drainage

North Fork Kougarok River (Stream No. 332-00-10250-2285-3048)

Near Mouth, Sec 8, T2N, R29W, KRM, Bendeleben C-6

Crossing Coordinates (WGS84): 65.5844 N, 164.7280 W
65.5836 N, 164.7330 W

Taylor Highway Low-Water Crossing, Sec 9
Crossing Coordinate (WGS84): 65.5936 N, 164.7012 W

Near Harris Creek, Sec 1
Crossing Coordinates (WGS84): 65.6055 N, 164.6012 W
65.6088 N, 164.5905 W

Upstream of North Fork

Coarse Gold Creek (Stream No. 332-00-10250-2285-3047)

Near Mouth and Kougarok at Confluence, Sec 7, T2N, R29W

Crossing Coordinate (WGS84): 65.5940 N, 164.7628 W and
Crossing Coordinate (WGS84): 65.5948 N, 164.7680 W

Henry Creek (Stream No. 332-00-10250-2285-3053)

At Mouth, Sec 13 and 24, T3N, R30W

Crossing Coordinate (WGS84): 65.6536 N, 164.8100 W

Kougarok River - Multiple Crossings Through Placer Mines

From Terminus of the Nome-Taylor Highway

From Sec 12, T3N, R30W

Crossing Coordinate (WGS84): 65.6750 N, 164.7989 W

Washington Creek (Stream No. 332-00-10250-2285-3335)

To Sec 20, T4N, R30W

Crossing Coordinate (WGS84): 65.7326 N, 164.9580 W

*****Serpentine River Drainage Headwater**

Schlitz Creek (Stream No. 331-00-10880-2068)

Trail to Serpentine Hot Springs, Sec 34, T5N, R29W, Bendeleben D-6

Crossing Coordinate (WGS84): 65.7878 N, 164.7488 W

Access From Nome-Council Road

Figure 9

Solomon River Drainage

Solomon River (Stream No. 333-10-11700)

At Lees Camp, Sec 13, T10S, R29W, KRM, Solomon C-5

Crossing Coordinate (WGS84): 64.6204 N, 164.3952 W

Shovel Creek (Stream No. 333-10-11700-2061)

Multiple Crossings from Sec 12 to 2, T10S, R29W

Crossing Coordinate Range (WGS84): 64.6338 N, 164.3966 W To
64.6560 N, 164.4252 W

Solomon River

Sec 6, T10S, R28W

Crossing Coordinate (WGS84): 64.6464 N, 164.3404 W

Big Hurrah Creek (Stream No. 333-10-11700-2082)

Sec 5, T10S, R28W

Crossing Coordinates (WGS84): 64.6548 N, 164.3156 W
64.6522 N, 164.3090 W

Upper Solomon River

Multiple Crossings Along the Casadepaga Access Road

From Sec 21 to 5, T9S, R28W

Crossing Coordinate Range (WGS84): 64.6959 N, 164.2845 W To
64.7353 N, 164.3252 W

Figure 10

Niukluk River Drainage

Casadepaga River (Stream No. 333-20-10670-2281-3301)

At Casadepaga, Sec 16, T8S, R28W, KRM, Solomon D-5

Crossing Coordinate (WGS84): 64.7960 N, 164.3534 W

At Lower Willow Creek, Sec 9, T8S, R28W

Crossing Coordinate (WGS84): 64.8120 N, 164.3458 W

At Thrope and Dixon Creeks, Sec 18, T7S, R27W

Crossing Coordinate (WGS84): 64.8880 N, 164.2114 W

Figure 11

Niukluk River Drainage

Crooked Creek (Stream No. 333-20-10670-2281-3160-4083)

Near Confluence with Ophir Creek, Sec 35, T5S, R25W, Bendeleben A-4

Crossing Coordinate (WGS84): 65.0163 N, 163.6696 W

Ophir Creek (Stream No. 333-20-10670-2281-3160)
Near Snowball Creek, Sec 13, T6S, R25W
Crossing Coordinate (WGS84): 64.9752 N, 163.6520 W

Sweetcake Creek (Stream No. 333-20-10670-2281-3160-4011)
Near Confluence with Ophir Creek, Sec 33, T6S, R25W
Crossing Coordinate (WGS84): 64.9284 N, 163.7332 W

Ophir Creek (Stream No. 333-20-10670-2281-3160)
Near Confluence with Niuklik River, Sec 33, T6S, R25W, KRM, Solomon D-4
Crossing Coordinate (WGS84): 64.9184 N, 163.7437 W

Niukluk River (Stream No. 333-20-10670-2281)
At Council, Sec 11, T7S, R25W, Solomon D-4
Crossing Coordinate (WGS84): 64.8930 N, 163.6808 W

Melsing Creek (Stream No. 333-20-10670-2281-3110)
Multiple Crossings, Sec 11 and 1
Crossing Coordinates (WGS84): 64.8948 N, 163.6640 W
64.9036 N, 163.6522 W
64.9058 N, 163.6492 W

Figure 1. Bluestone & Tisuk River Drainages crossing points (yellow +).



Figure 2. Sinuk, Cripple, Penny River Drainages crossing points (yellow +).



Figure 3. Lower Snake & Nome River Drainages crossing points (yellow +).

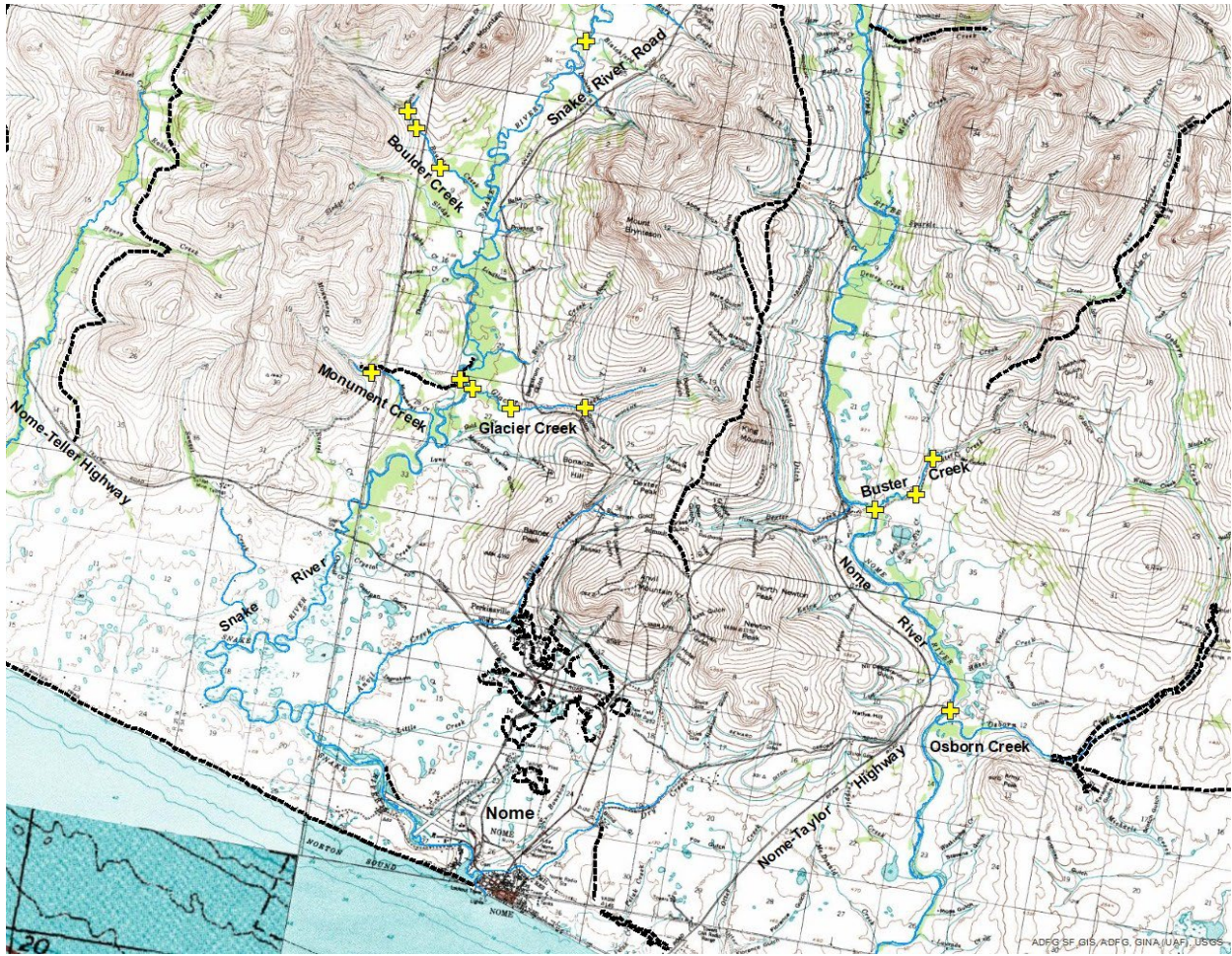


Figure 4. Upper Snake River Drainage crossing points (yellow +).

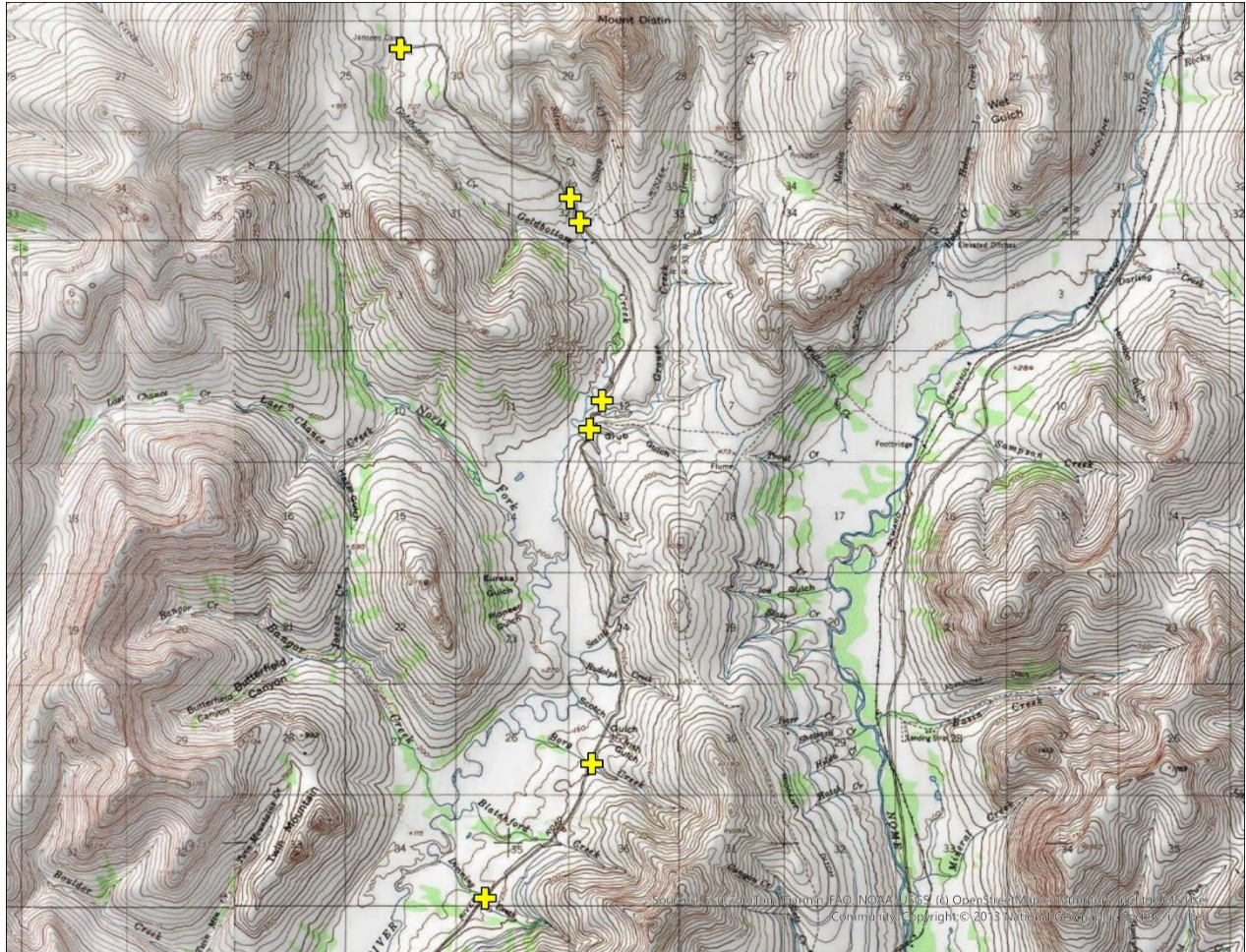


Figure 5. Upper Nome River Drainage crossing points (yellow +).



Figure 6. Pilgrim River Drainage crossing points (yellow †).



Figure 7. Lower Kougarok River Drainage crossing points (yellow +).



Figure 8. Upper Kougarok River Drainage crossing points (yellow +).

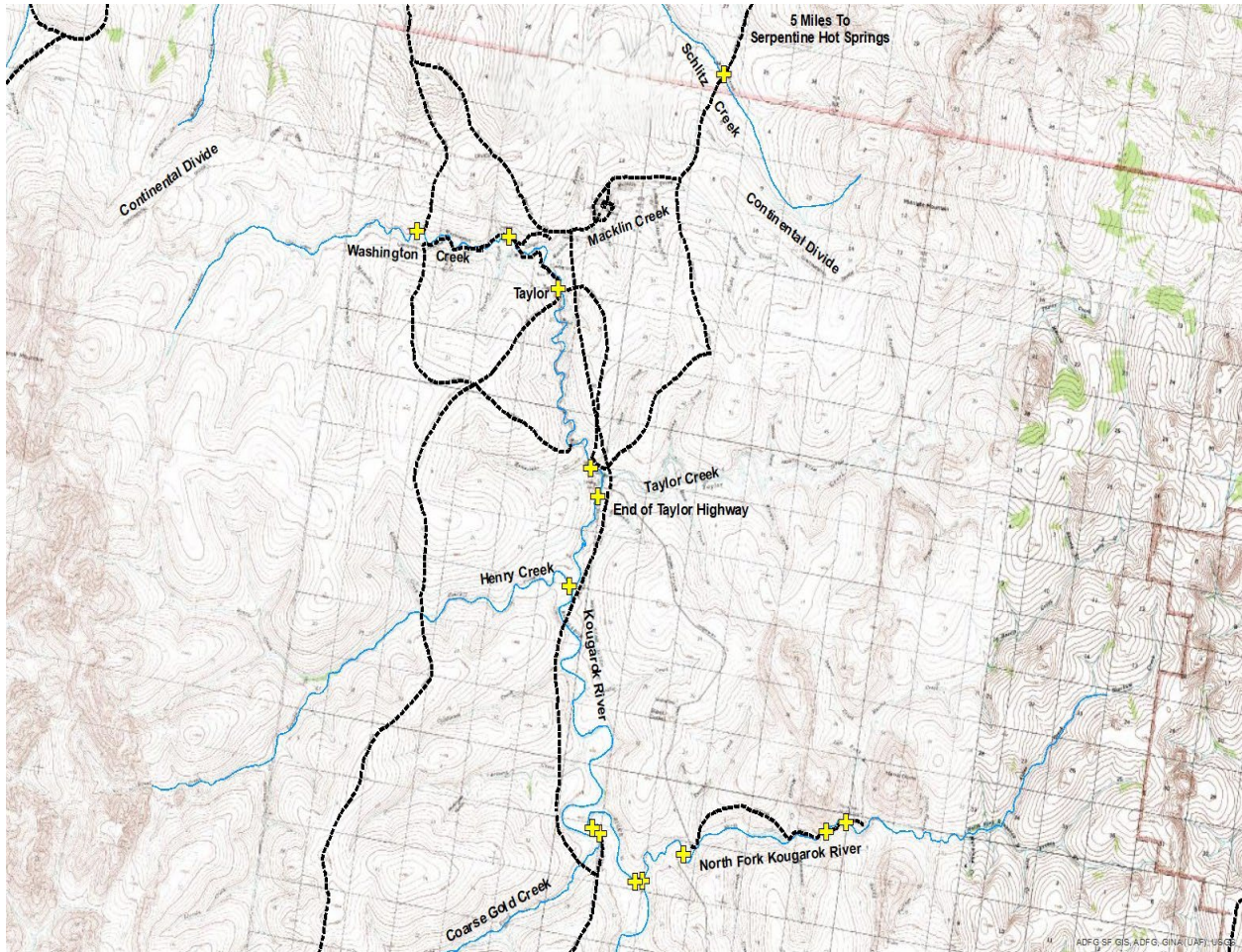


Figure 9. Solomon River Drainage crossing points (yellow +).



Figure 10. Casadepaga River Drainage crossing points (yellow +).

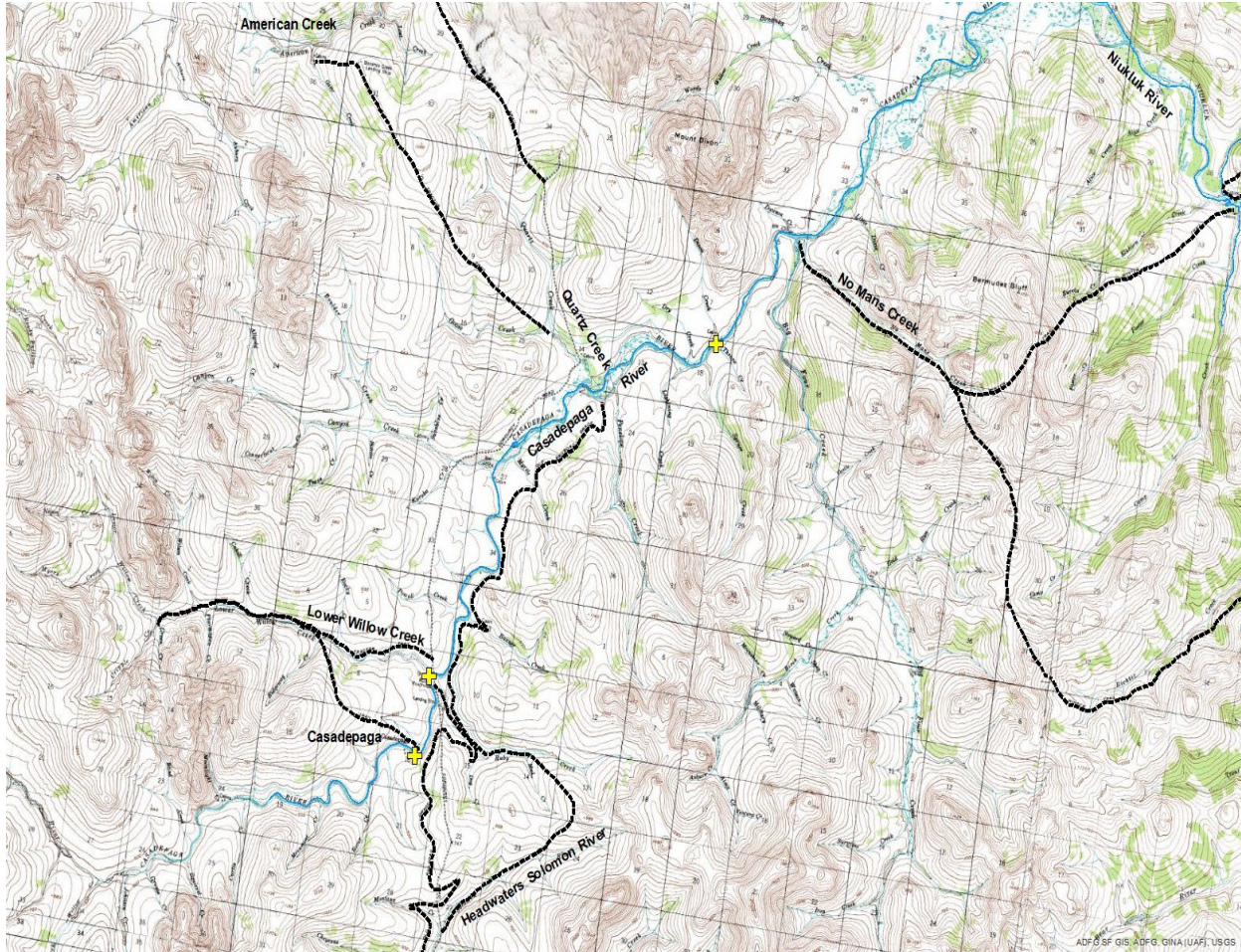


Figure 11. Niukluk River Drainage crossing points (yellow +).

