

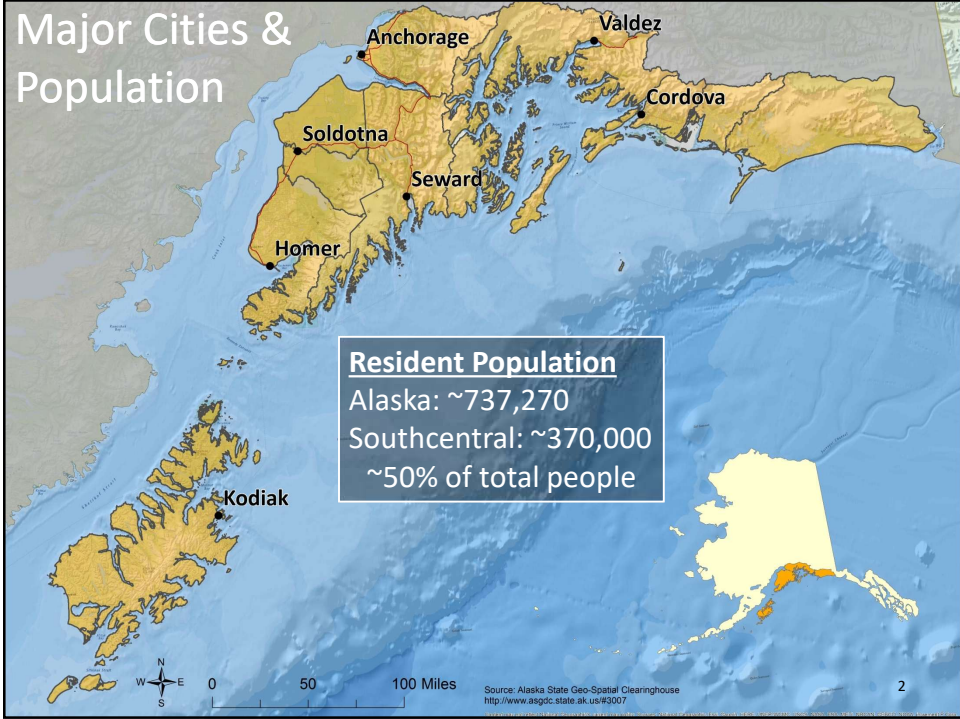


Alaska Department of Fish and Game
 Division of Wildlife Conservation
Southcentral Region Overview
 Region 2- Units 6, 7, 8, 14C & 15
 Kodiak, Alaska – March 2026

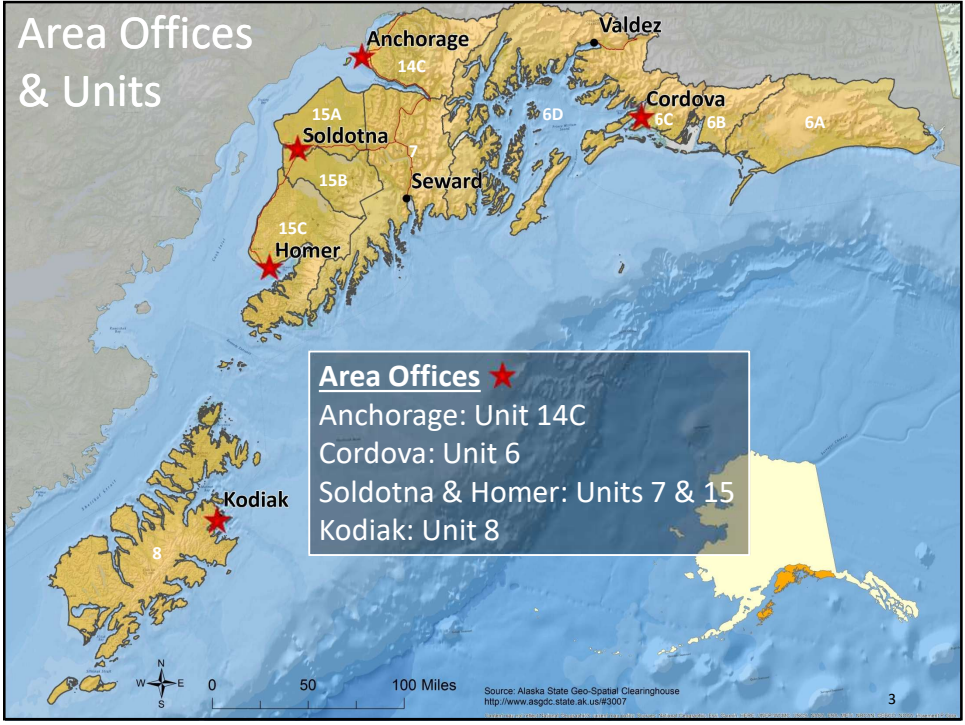
RC 4 Tab 1.1



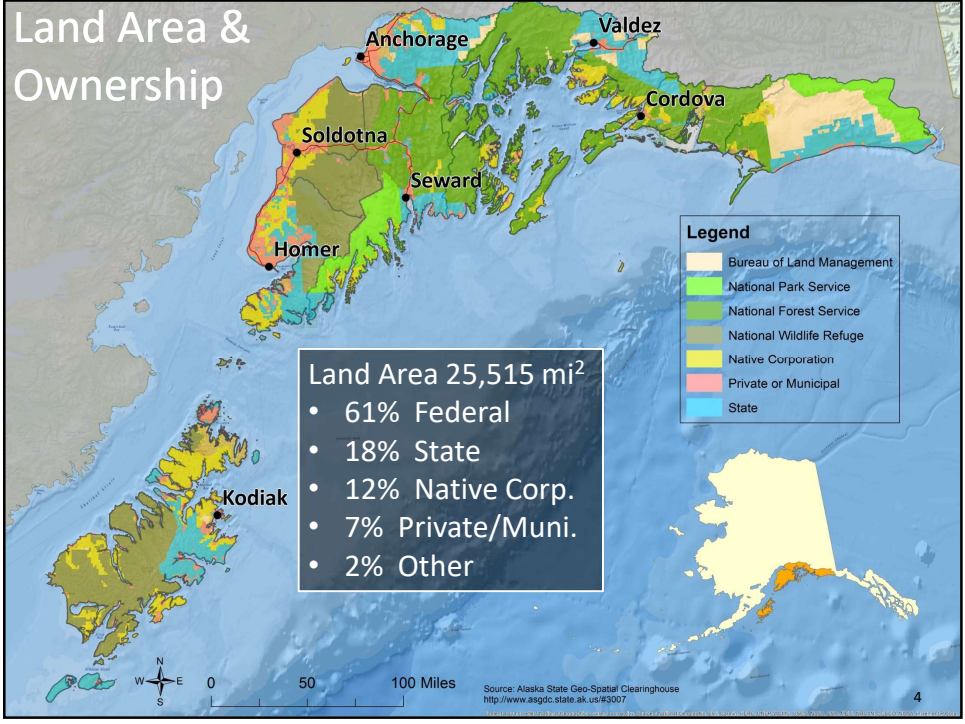
1



2



3



4

Major Wildlife Species 5

Big Game

- Caribou
- Dall's Sheep
- Deer
- Elk
- Moose
- Mountain Goats
- Brown Bears
- Black Bears
- Wolves
- Wolverines

Furbearers & Small Game

- Beavers
- Lynx
- Marten
- River Otters
- Ptarmigan
- Spruce Grouse
- Snowshoe Hares

DWC Southcentral Region Overview

5

Regional Leadership 6

Cyndi Wardlow
Regional Supervisor

Tom Lohuis
Research Coordinator

Jeff Selinger
Management Coordinator

DWC Southcentral Region Overview

6

Division of Subsistence 7



Lauren Sill
Southern Region
Program Manager



Jackie Keating
Subsistence Resource
Specialist 3



Lara Lake
Subsistence Resource
Specialist 1

The mission of the Division of Subsistence is to scientifically gather, quantify, evaluate, and report information about customary and traditional uses of Alaska's fish and wildlife resources. (AS 16.05.094)



DWC Southcentral Region Overview

7

Regional Staff 8

Regional Administrative Team

Bernard Nidowicz
Administrative Officer

Melinda Swanson
Administrative Assistant

Aurora Palmer
Administrative Assistant

Anchorage Wildlife Information Center

Danner Shreve
Wildlife Biologist 2

Dayton Rosenberg
Information Officer

Riley Marcus
Wildlife Technician

Chris Harrington
Wildlife Technician





DWC Southcentral Region Overview

8

A Day in the Life of a Wildlife Biologist

9

Wildlife Management

- Population monitoring
- Intensive management activities
- Research projects
- Data analysis & preparing reports



Wildlife-Human Conflicts

- Moose and bears
- Waste & other attractant-related issues
- Wildlife safety



Public Outreach

- AC meetings
- Community Council meetings
- Coordinating with other agencies
- Commenting on agency projects & permits
- Community bear committees (e.g., ABC, KBBC, KUBS)
- Law Enforcement coordination
- School & public presentations
- Media interviews

DWC Southcentral Region Overview



9

Unit 6: North Gulf Coast-Prince William Sound

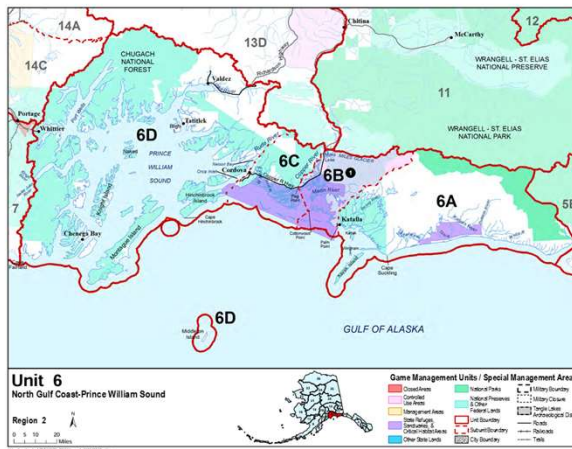
10



Charlotte Westing
Area Biologist



Samantha Renner
Program Technician

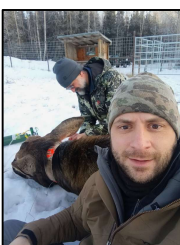


DWC Southcentral Region Overview




10


Units 7 and 15: Kenai Peninsula




Chris Bottom
Area Biologist



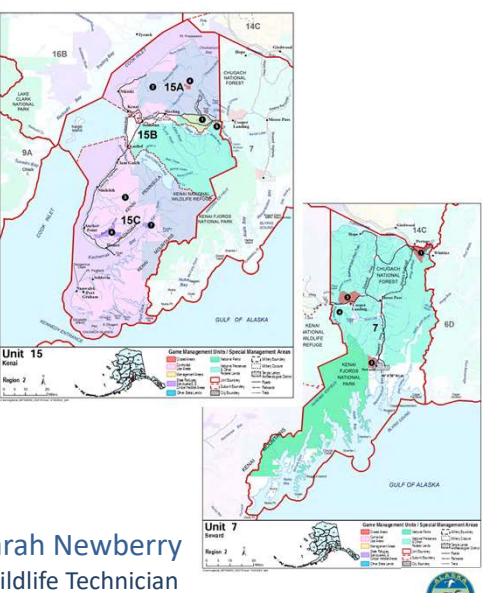
Jason Herreman
Assistant Area Biologist



Jacob Pelham
Wildlife Biologist 1



Sarah Newberry
Wildlife Technician



Unit 15
Kenai

Unit 7
Kenai


Game Management Units / Special Management Areas

- 15A, 15B, 15C, 7, 14C, 9A, 16B, 14C, 8D, 7, 14C, 8D
- Kenai National Park, Chugach National Park, Kenai Fjords National Park, Alyeska National Park, Seward Wildlife Refuge, Kenai Peninsula National Wildlife Refuge

DWC Southcentral Region Overview

11

Unit 8: Kodiak-Shelikof



Nate Svoboda
Area Biologist



Katrina Wandersee
Program Technician



Bill Dunker
Assistant Area Biologist

Recruiting Soon
Wildlife Technician



Unit 8
Kodiak Shelikof

Game Management Units / Special Management Areas

- 8, 9C, 9E, 15C, 8, 9C, 9E, 15C
- Alaska Maritime National Wildlife Refuge, Kodiak National Wildlife Refuge, Shelikof National Wildlife Refuge

DWC Southcentral Region Overview

12

15

Wildlife Research Projects



Thomas McDonough
Wildlife Biologist



Ori Badajos
GIS Analyst



Nick Fowler
Wildlife Biologist

Units 15A & 15C Moose Research

- Population dynamics and carrying capacity post-fire
- Innovative use of skeletal markers of arthritis and tooth wear to investigate wolf predation

Antler Growth Study

- Using GPS radiocollars to investigate how habitat use and nutrition impact antler growth and configuration over time
- Help inform managers how and when moose reach legal antler configurations under the selective harvest system

DWC Southcentral Region Overview 

15

16

Wildlife Research Projects

Mountain Goat Research

- Cordova mountain goat project (cooperative with USFS)
- 14C Lake George mountain goat project

Dall's Sheep

- Data analysis ongoing for survival, recruitment, rates and causes of mortality, and climate change effects on sheep populations including avalanches and summer nutrition

Kenai Brown Bear Research

- Capture and collar bears in spring and fall
- Determine reproductive rates, recruitment rates, and survival with a long-term data set



Kyle Smith
Wildlife Biologist



Sean Farley
Wildlife Physiologist

DWC Southcentral Region Overview 

16

Wildlife Research Projects 17



Dave Saalfeld
Wildlife Biologist



Kiana Young
Wildlife Biologist

Kenai Peninsula Wolf Project

- Pack dynamics, movement, home ranges, rates and causes of mortality
- Project ongoing since 2015. One more winter of collar deployment then transition to data analysis and publication
 - Wolf numbers down slightly but stable across GMU 15
 - High human-caused mortality with harvest being the primary driver

DWC Southcentral Region Overview


17

Wildlife Research Projects 18

Lynx Research

- Anchorage Bowl Lynx
 - Project ongoing since 2019.
 - Movement, home ranges, dispersal, rates
 - Currently at bottom of hare cycle
 - High anthropogenic mortality, low natural mortality
 - Human conflict (poultry, rabbits)
 - Research will continue to investigate any changes due to hare cycle fluctuations
- Kenai Lynx project
 - New research to begin 2027
 - Similar research questions as above
 - Also: Are there areas that function as a refugia from harvest? What drives population cycles? Resident animals vs. dispersal
- ADF&G YouTube: Working for Wildlife: Canada Lynx Population Dynamics in Southcentral Alaska



DWC Southcentral Region Overview


18

Working For Wildlife: Canada Lynx Population Dynamics in Southcentral Alaska






CANADA LYNX
GPS TRACKING

These locations are generic and don't reflect exact locations.

Google Earth
About, Central Command, Oct 11, 2014

09:31 PM 29°F SPYRO

DWC Southcentral Region Overview

Sitka Black-tailed Deer Translocation Project






Sitka black-tailed deer were moved from Kodiak to the southern end of the Kenai Peninsula in late-September and early-October 2025, with the goals of enhancing hunting opportunities and strengthening local food security

- Deer were captured with netguns from helicopters
- More than 40 deer were captured on Sitkinak Island during the project
 - Only animals appearing healthy were considered for translocation
 - Samples collected from for health surveillance
 - No cryptorchid bucks were transported

DWC Southcentral Region Overview

Sitka Black-tailed Deer Translocation Project

21





- 5M and 14F deer were released near Port Chatham
 - Ear tags and GPS collars
- Most deer are still within 4 miles of the release site
 - Two deer have traveled up to 10 miles away
- Currently 3M and 10F deer “on the air” via their GPS collars
 - One other male slipped his collar, current status unknown
- When a mortality signal from a collar is received, efforts are made to retrieve it within 24 hours, along with the carcass, for a necropsy to determine cause of death
 - One pneumonia, one drowning, and 3 unknowns (1M and 4F)
 - Most recent mortality was at the end of December






DWC Southcentral Region Overview

21


Sitka Black-tailed Deer Translocation Project

22

We aren't over the finish line yet with 2 or more months of winter conditions remaining, BUT...

- Most deer were in close proximity to each other during the normal rutting season
 - Survey flights in the spring to check for any fawns with the does
- Learning about what deer are doing on this specific landscape
- Focusing on the scientific benefit to inform any future activities
- Based on the history of game transplants in Alaska, it could be 20 years or more before a stable and huntable population is established
 - Currently there is no hunting season for deer on the Kenai Peninsula



DWC Southcentral Region Overview

22

Hunter Education in Southcentral

23



2025 Certification Courses (Hunter Ed, Bowhunter Ed, Muzzleloader Ed, Crossbow Ed)

Community	Number of Classes	Certified Students
Anchorage	66	904
Cordova	1	17
Homer	7	39
Kenai	12	137
Kodiak	7	45
Seward	4	39
Soldotna	8	68
TOTALS	105	1,249

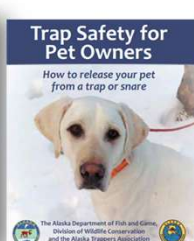
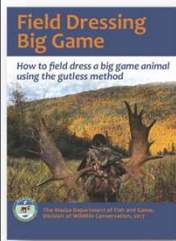
Statewide, 43% of the students who completed certifications in 2025 were in Southcentral Alaska communities

DWC Southcentral Region Overview

23

Wildlife Education and Outreach

24



- Supporting Wildlife Management and Research through education and outreach programs
- Developing materials for hunters and trappers
- Outdoor skills workshops with Alaskans Afield and B.O.W.
- Youth education and teacher resources
- Teaching wildlife safety classes for all ages

DWC Southcentral Region Overview

24

Wildlife Education and Outreach

25

- Wildlife Wednesday at the Alaska Zoo
- Winter Wildlife Series virtual lectures
- Working for Wildlife video productions
- Communication with local groups through social media platforms, like NextDoor and Facebook
- Raising awareness for habitats and refuges events

DWC Southcentral Region Overview

25

Lands and Refuges & Wildlife Habitat Enhancement Programs

26

Additions

- **South Potter Marsh:** New parking lot (2022) and new 200' boardwalk (2026)
- **Anchor River/Fritz Creek Critical Habitat Area (CHA):** 174 acres added (2022–2025)

Trail Improvements

- **Watermelon Trail (14 miles):** Entire trail brushed, installed & repaired bridges, reroute around CIRI land (2025–ongoing)
- **Fox River Flats Trail (6 miles):** began restoring historic trail (2026–ongoing)

Moose Habitat Enhancements

- **Anchor River/Fritz Creek CHA:** 195 acres (2022–2025)
- **Fox River Flats CHA:** 90 acres (2026)
- **Twenty-mile River:** 115 acres (planned 2027)

Partners: Municipality of Anchorage, Conoco Phillips, DNR, DOT, Homer Soil & Water Conservation District, Kachemak Heritage Lands Trust, Kachemak Moose Habitat, Safari Club International, Snowmads, U.S. Forest Service

DWC Southcentral Region Overview

26

ADF&G Hunter Access Program and Projects

27

Saltery Cove Trail System Improvements – Kodiak Island

- **Supports access for hunting, fishing, and recreation**
- Major OHV access rehab & improvement project
- Repaired degraded trail sections and reduced braiding
- Improved drainage and installed erosion control measures to protect salmon streams
- Collaboration with Kodiak Island Borough, Island Trails Network, DWC, USFW.
- Substantially completed 2024, to be finished by end of 2026



DWC Southcentral Region Overview

27

ADF&G Hunter Access Program and Projects

28

Eklutna Lake ATV Trailhead Expansion

- **Major access point for moose and bear hunting**
- Created a new upper parking lot that added 20 parking stalls to provide additional parking for trucks and trailers (ATV/snowmachine/horse)
- Doubled pre-construction parking capacity and added signage
- Enhancing safety and reduced congestion at the start of the Eklutna Lakeside Trail
- Collaboration with AK State Parks, DWC, USFWS and Native Village of Eklutna/Eklutna Inc.
- Completed Fall 2024



DWC Southcentral Region Overview

28

When we aren't being Wildlife Biologists...

29

We are also:

- Football coaches
- Soccer officials
- Hunter education instructors
- Cycling club members
- Scout troop leaders
- Little League coaches
- Ski patrol volunteers
- Museum Committee members
- Swim coaches
- Friends of the Library
- Snowmachiners
- Food bank volunteers
- Gardeners

- Parents and grandparents
- Dog trainers
- Wrestling coaches
- Musicians
- Hockey players
- Photographers
- Hunters, trappers, anglers, and gatherers



DWC Southcentral Region Overview 



30

Welcome to Region 2

DWC Southcentral Region Overview 