



## Subsistence Overview

Presentation to the Alaska Board of Game  
Kodiak, Alaska – March 2026



Lauren Sill and Jackie Keating  
RC 4 Tab 1.2



1

## ADF&G Subsistence Mission


2

**Mission** Scientifically gather, quantify, evaluate, and report information about customary and traditional uses of Alaska's fish and wildlife resources. AS 16.05.094


**C&T** Customary and Traditional Uses

**ANS** Amounts Reasonably Necessary for Subsistence

**NSA** Nonsubsistence Area








Mapping interviews in Kodiak, July 2023

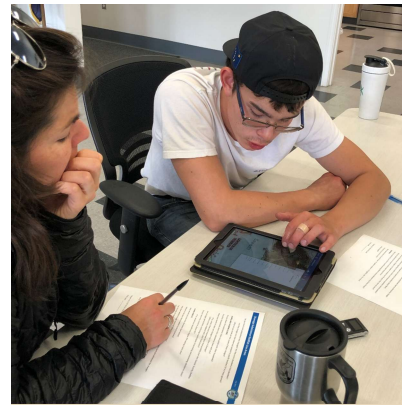


Overview of ADF&G Subsistence

2

# ADF&G Subsistence Research

-  Quantitative and qualitative research
-  Most projects are partnerships
-  Research guided by ethical principles
-  Participation is voluntary and confidential
-  Community review of draft data



Fieldwork in Chenega, 2021

Overview of ADF&G Subsistence



# Finding Subsistence Data

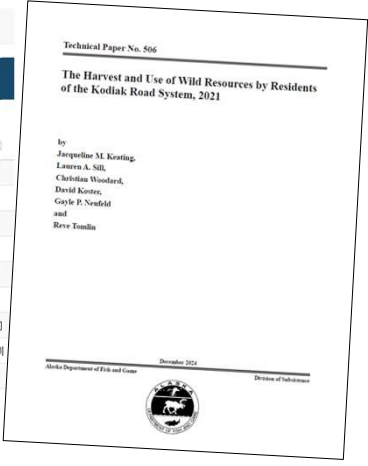
Division of Subsistence - CSIS Data Downloader

[Data Download](#) [Info](#)

## CSIS - Data Downloader

Show 10 entries

	year	commname	resource
1	2021	Kodiak Road	All Resources
2	2021	Kodiak Road	Fish
3	2021	Kodiak Road	Fish [CF Retention]
4	2021	Kodiak Road	Fish [Rod and Reel]
5	2021	Kodiak Road	Fish [Other Gear]
6	2021	Kodiak Road	Salmon
7	2021	Kodiak Road	Salmon [CF Retention]
8	2021	Kodiak Road	Salmon [Rod and Reel]
9	2021	Kodiak Road	Salmon [Other Gear]
10	2021	Kodiak Road	Chum Salmon

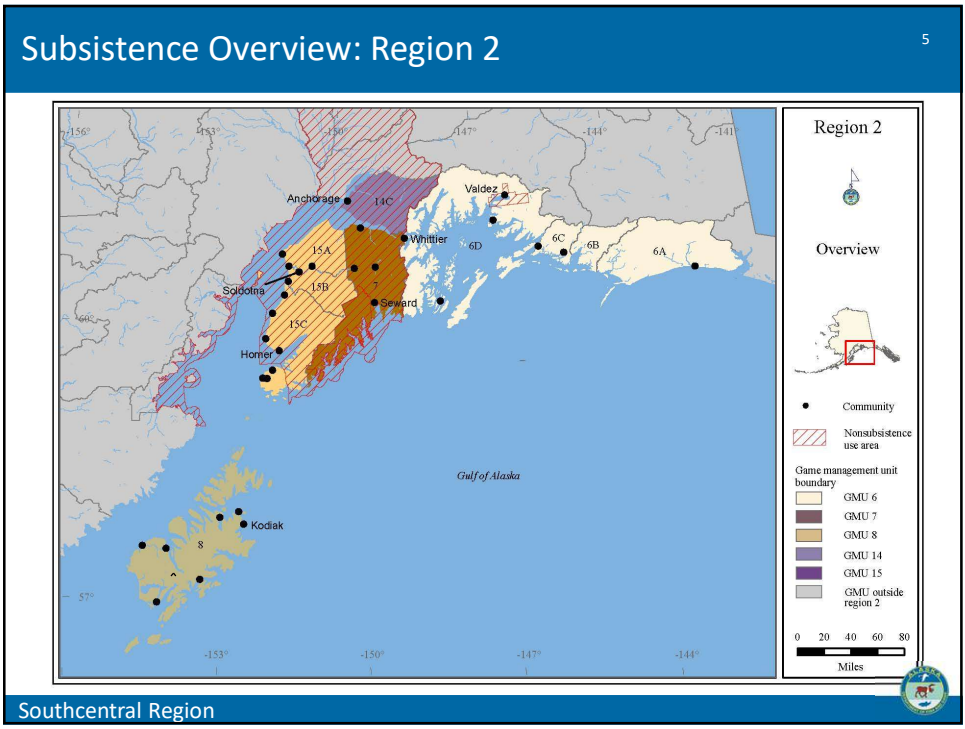


<http://www.adfg.alaska.gov/sb/CSIS/>

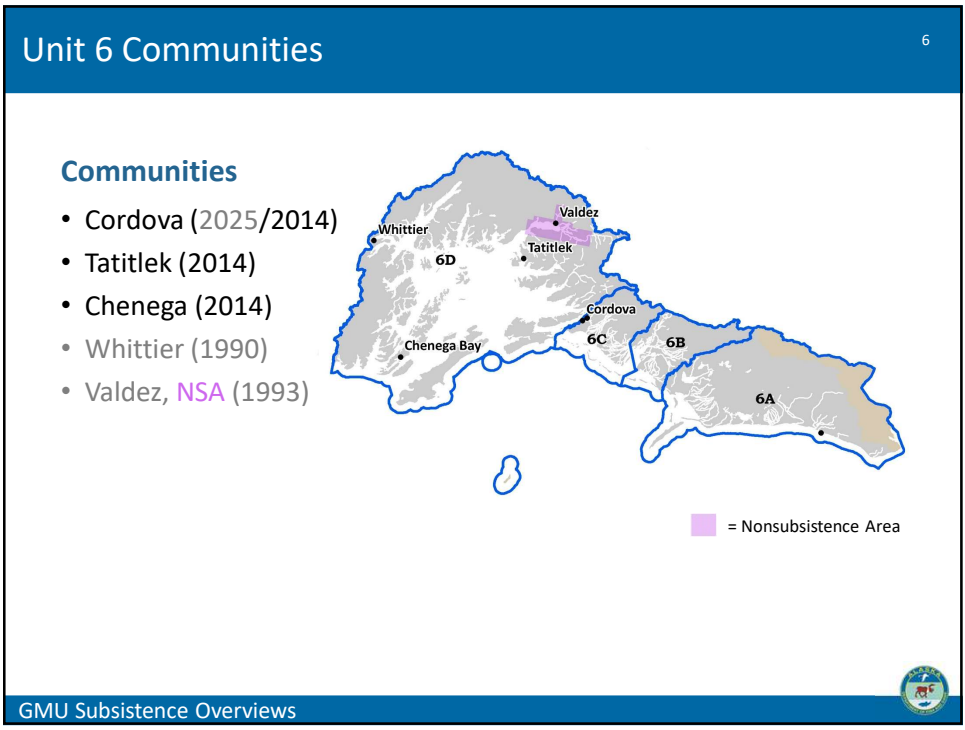
<http://www.adfg.alaska.gov/sf/publications/>

Overview of ADF&G Subsistence





5



6

## Unit 6 Communities 7

### Communities

- Cordova (2025/2014)
- Tatitlek (2014)
- Chenega (2014)
- Whittier (1990)
- Valdez, NSA (1993)

### Current Research

- Cordova comprehensive surveys
- Unit 6D black bear hunter surveys
- Hunter origin and hunting area map

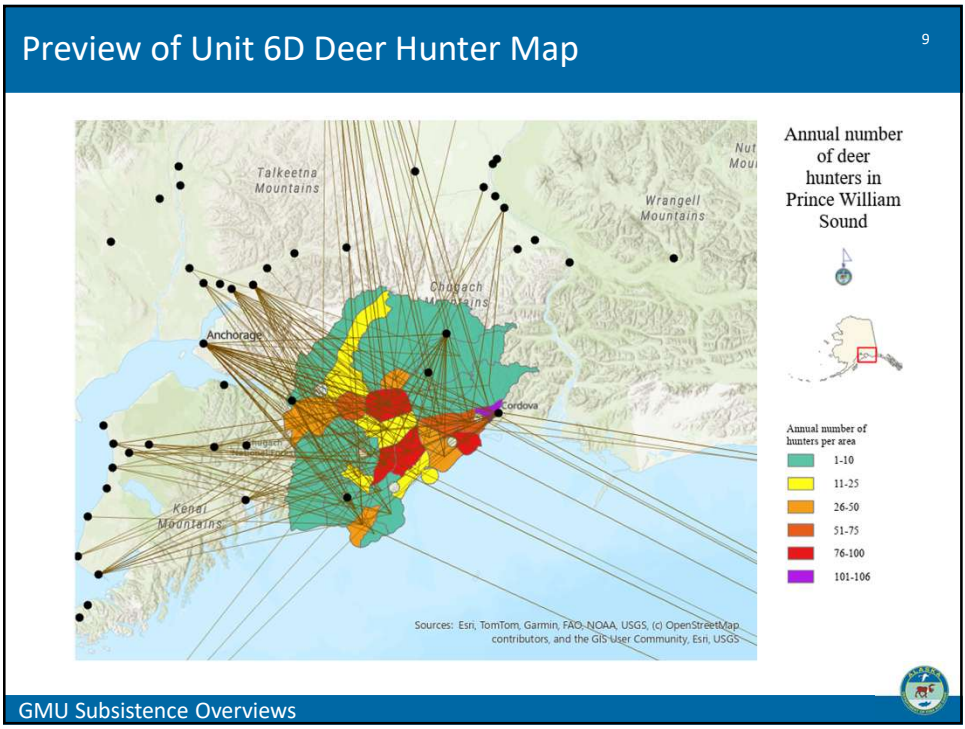
7

## Unit 6 Ethnographic Overview 8

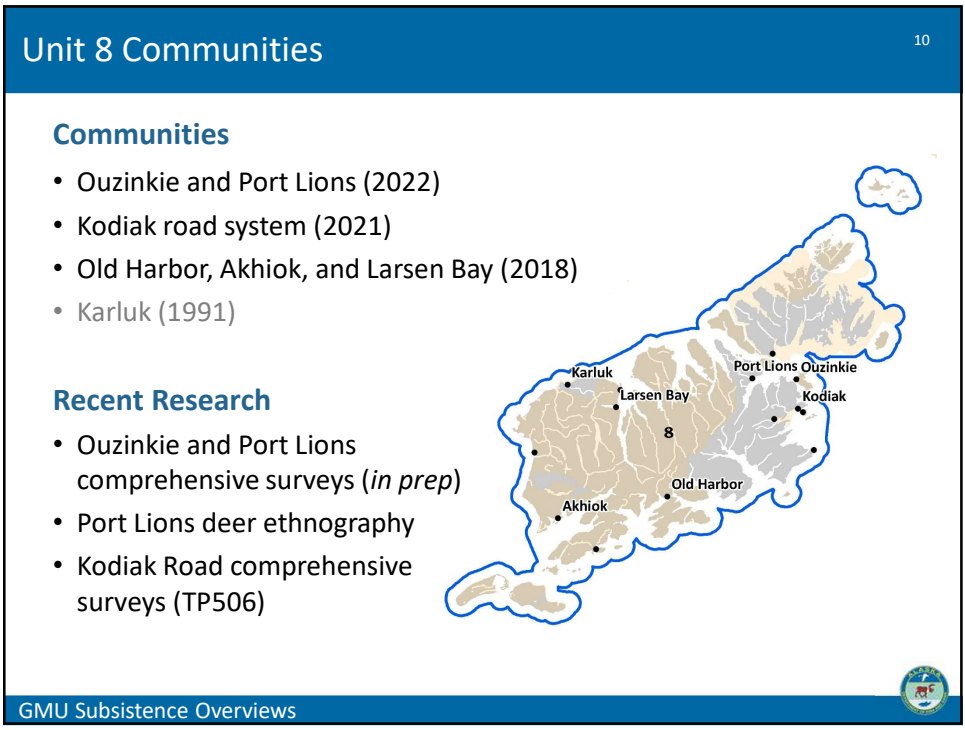
- Traditional lands of Sugpiaq, Chugach, and Eyak people
- Long history of black bear and goat harvest; parts historically used for clothing and tools
- Deer became a primary contemporary subsistence resource
- Waterfowl, small land mammals, and moose are also important
- Hunters from across the state travel to Unit 6 for deer, bear, and goat

Black bear near Chenega; glacier in PWS. Credit: J. Keating

8



9



10

## Unit 8 Ethnographic Overview

11

- Traditional lands of Sugpiaq/Alutiiq people
- Deer have replaced marine mammals as the primary non-fish protein
- Residents also use brown bear, goat, small land mammals, and birds

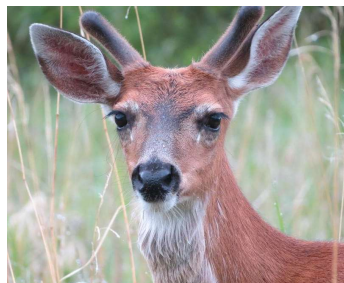


11

## Unit 8 Ethnographic Overview

12

- Traditional lands of Sugpiaq/Alutiiq people
- Deer have replaced marine mammals as the primary non-fish protein
- Residents also use brown bear, goat, small land mammals, and birds
- Both local and nonlocal hunters expressed connections with land around Port Lions



The challenging thing for us, now, is we keep having to go further and further away from the village. But, back in the day, when I was younger, we wouldn't have to go very far [to get what we needed].

-Port Lions resident\_E\_02\_2023



Trail damage behind Port Lions



12

## Unit 15 Communities

13

### Communities

- Port Graham (2023)
- Nanwalek (2014)
- Seldovia (2014)

### Recent Research

- Port Graham comprehensive surveys (*in prep*)
- Port Graham moose ethnography

GMU Subsistence Overviews

13

## Unit 15C Ethnographic Overview

14

- Traditional lands of Dena'ina Athabaskan and Sugpiat-Alutiiq
- Longterm use of moose; using whole animal and sharing remain paramount
- History of black bear and mountain goat subsistence uses
- Small game was traditionally taken with deadfall traps
- Ducks and grouse remain important sources of fresh food
- Local concerns: trespassing on private land; young hunter recruitment

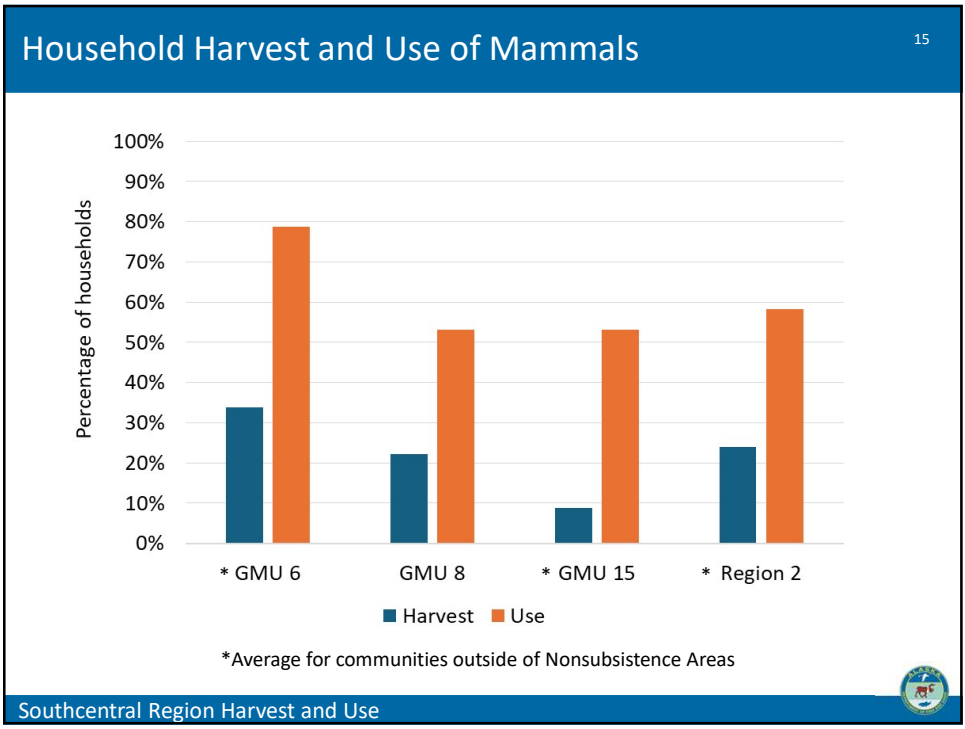
Mapping interview with Port Graham hunter

“The way we've been taught when we're sharing moose is kind of get the elders first... After that, I go to bigger families and share from there, and after that it's whoever wants it.”

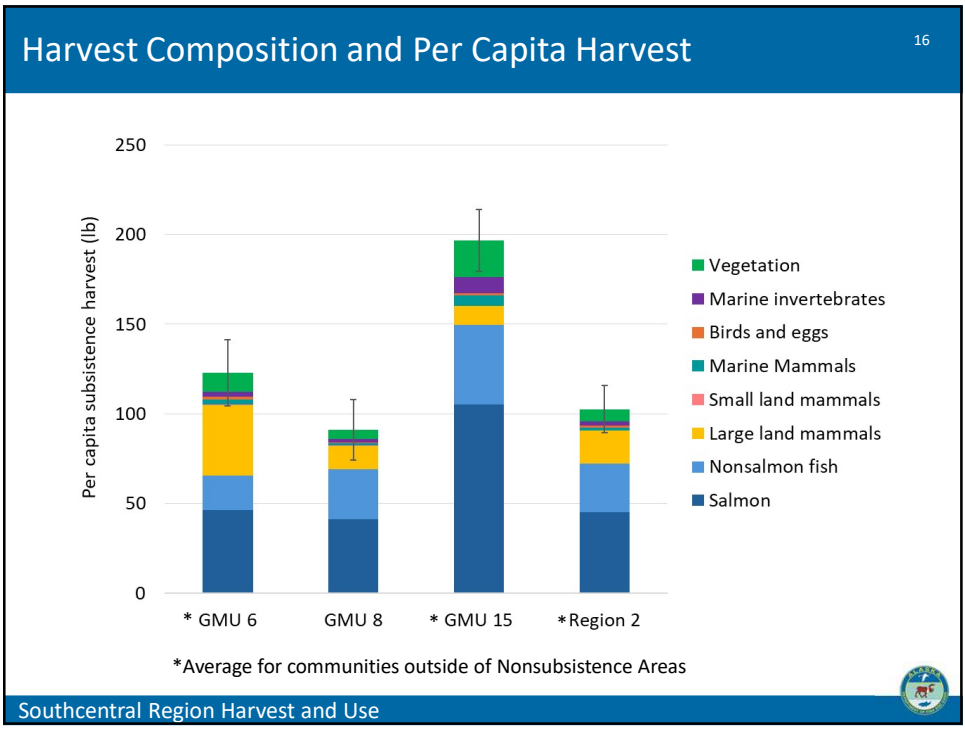
—Port Graham resident\_M\_14\_2024

GMU Subsistence Overviews

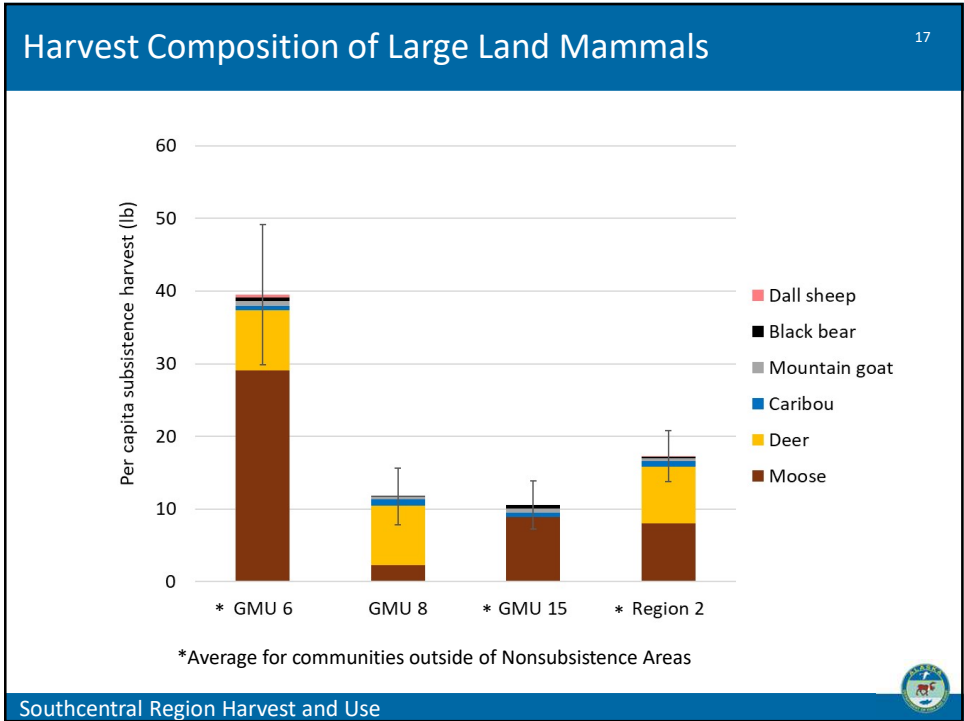
14



15



16



17

### Deer C&T Findings 18

Unit	Finding	ANS
<b>Unit 6</b>	Positive	1,000 – 1,250
<b>Unit 8</b>	Positive	3,600 – 4,100

“Everybody is pretty good about sharing around here... It’s a pretty good community in that aspect.

I get lots of deer, and I give people deer meat, all they want.”

-Larsen Bay resident, 2019


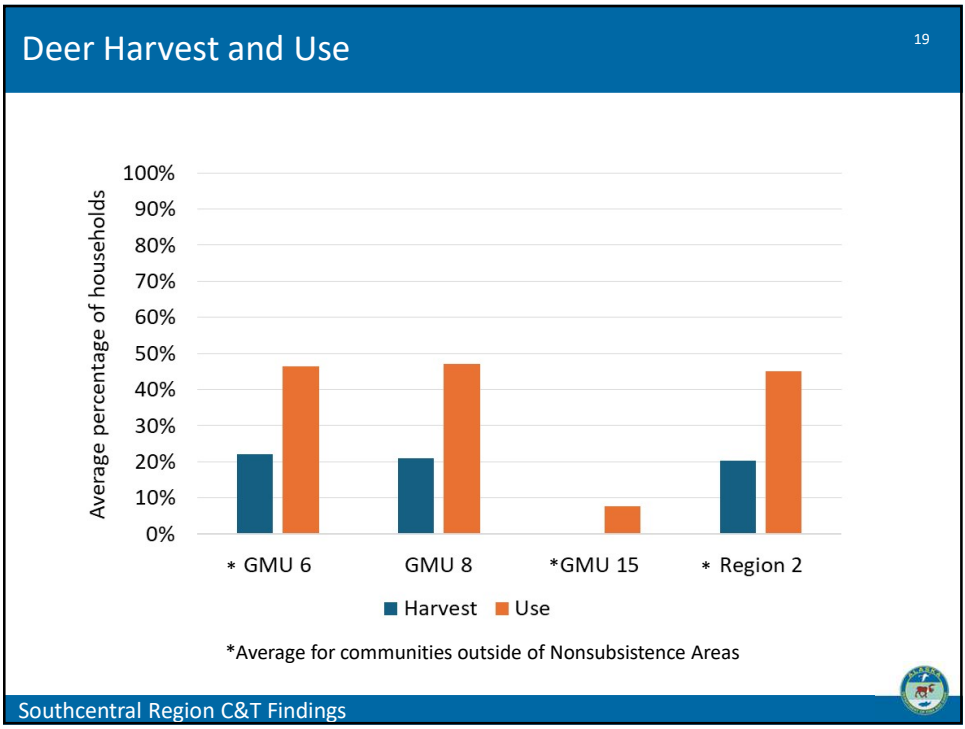


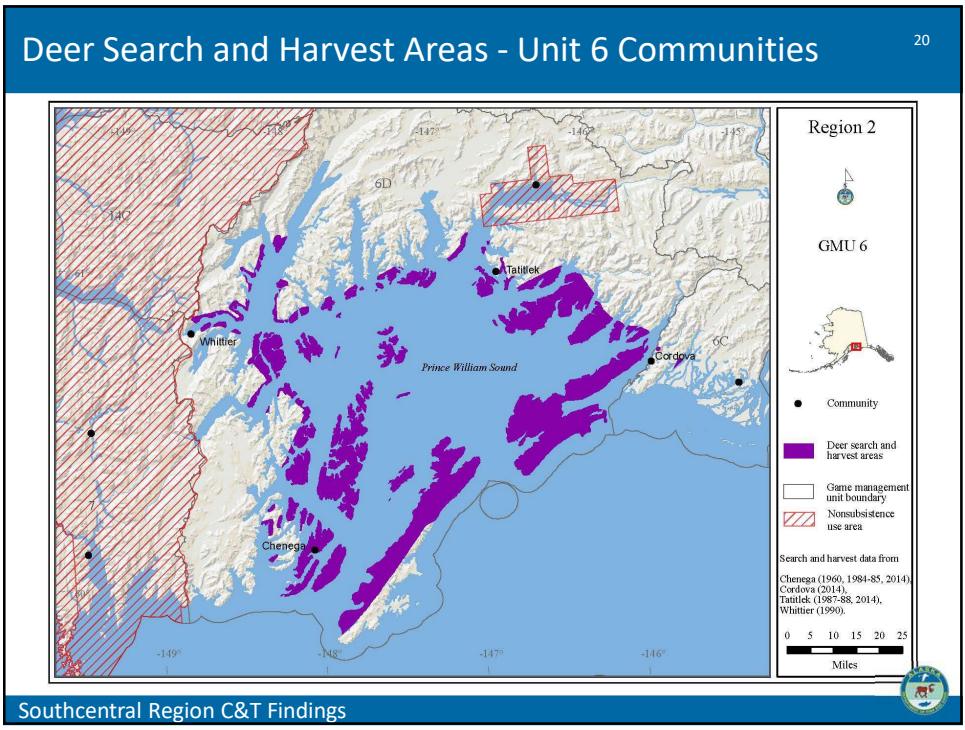
Photo credit: Nick Steele, Kodiak

Southcentral Region C&T Findings

18



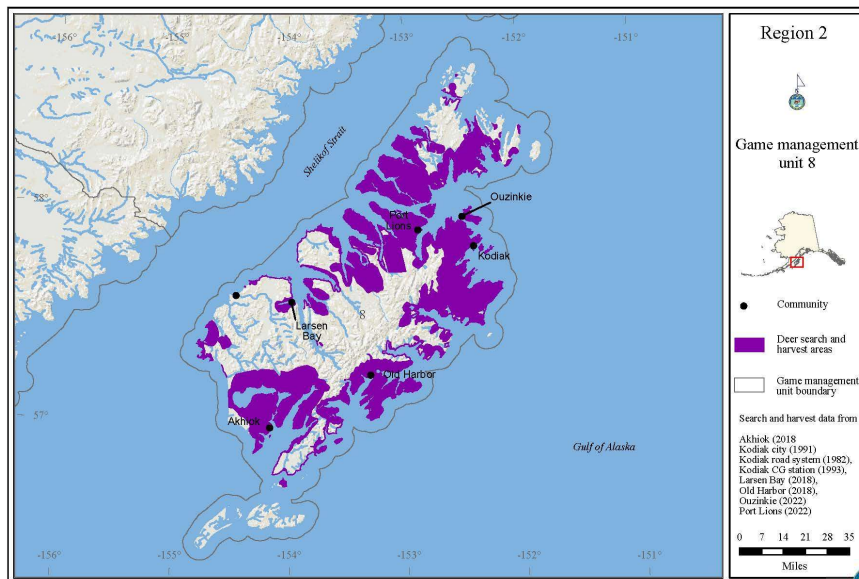
19



20

## Deer Search and Harvest Areas - Unit 8 Communities

21



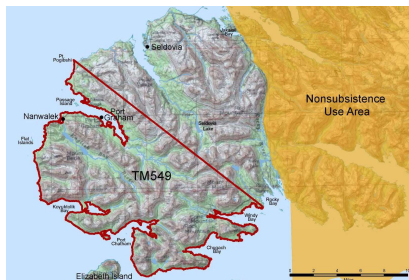
Southcentral Region C&T Findings

21

## Moose C&T Findings

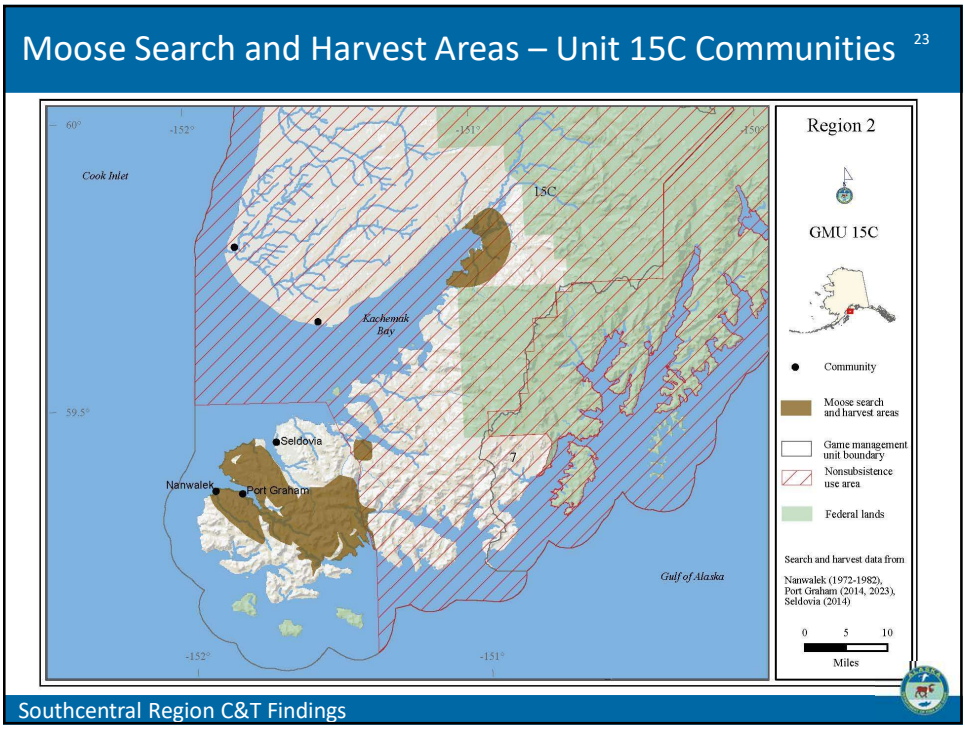
22

Units	Finding	ANS
Unit 6	Negative	-
Unit 15B (Kalgin Island)	Positive	2
Unit 15C (Northeast of line from Point Pogibshi to point of land between Rocky and Windy bay)	Negative	-
Unit 15C (Southwest of line from Point Pogibshi to point of land between Rocky and Windy bays)	Positive	5 – 8



Southcentral Region C&T Findings

22





23

### Bear C&T Findings 24

Black Bear		
Unit	Finding	ANS
Unit 6	Positive	80 – 120
Unit 15C	Positive	20 – 60

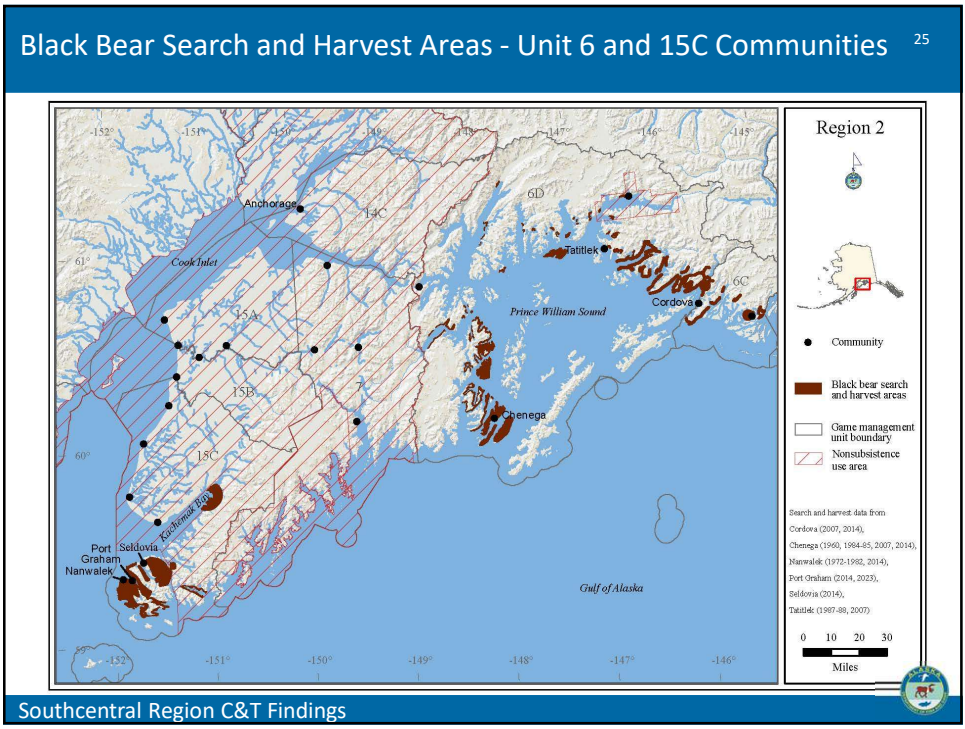
Brown Bear		
Unit	Finding	ANS
Unit 6	Negative	-
Unit 8	Negative	-
Unit 15C	Negative	-

Black bear in Unit 14C; Brown bears in Unit 8. Credit: J. Keating

**Southcentral Region C&T Findings**

24



25

### Goat and Other Large Game C&T Findings

26

Goat			
Units	Finding	ANS	
Unit 6C + 6D	Positive	15 – 26	
Unit 8	Negative	-	
Unit 15C	Positive	7 – 10	

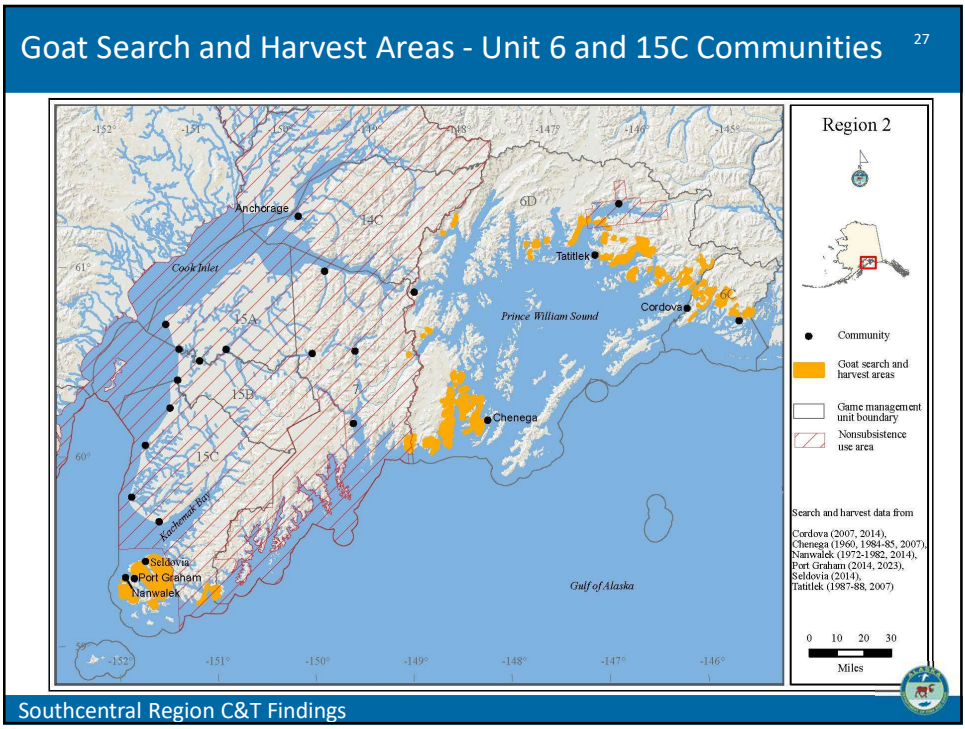
  

Other Large Game			
Species	Unit	Finding	ANS
Caribou	8	Negative	-
Elk	8	Negative	-
Wolves	6	Positive	None set

Goats in Unit 8. Credit: J. Keating

Southcentral Region C&T Findings

26



27

### C&T Findings for Small Game 28

Species	Unit	Finding	ANS
<b>Canada Geese</b>	6	Positive	None set
<b>Grouse</b>	15	Positive	None set
<b>Ptarmigan</b>	15	Positive	None set
<b>Migratory game birds</b>	*All	Positive	None set
<b>Furbearers</b>	*All	Positive	90% of the harvestable portion

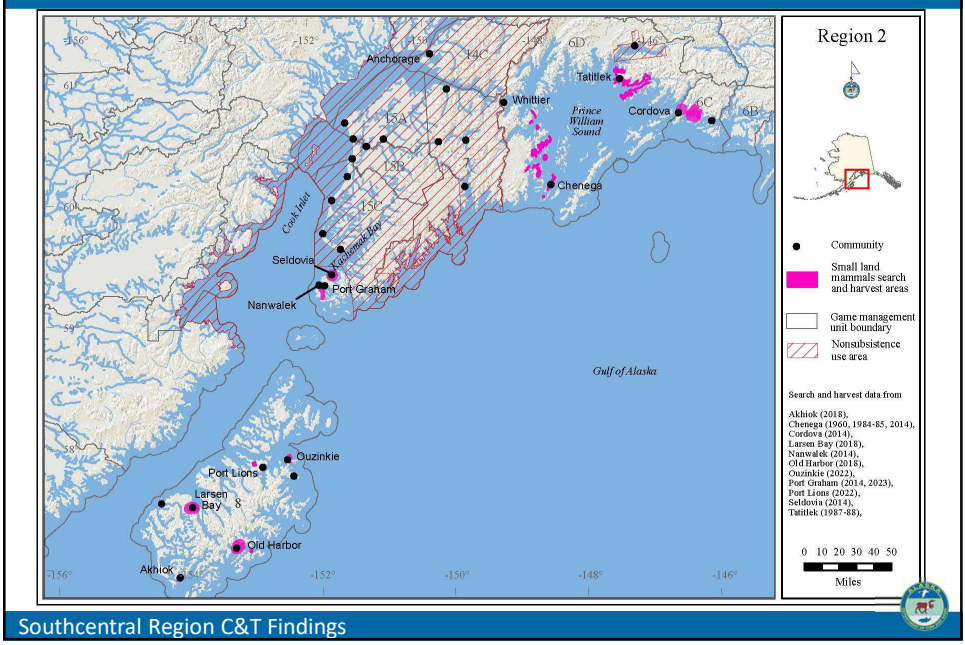
\*Units with a harvestable portion

Ptarmigan and fox in Unit 8. Credit: J. Keating

**Southcentral Region C&T Findings**

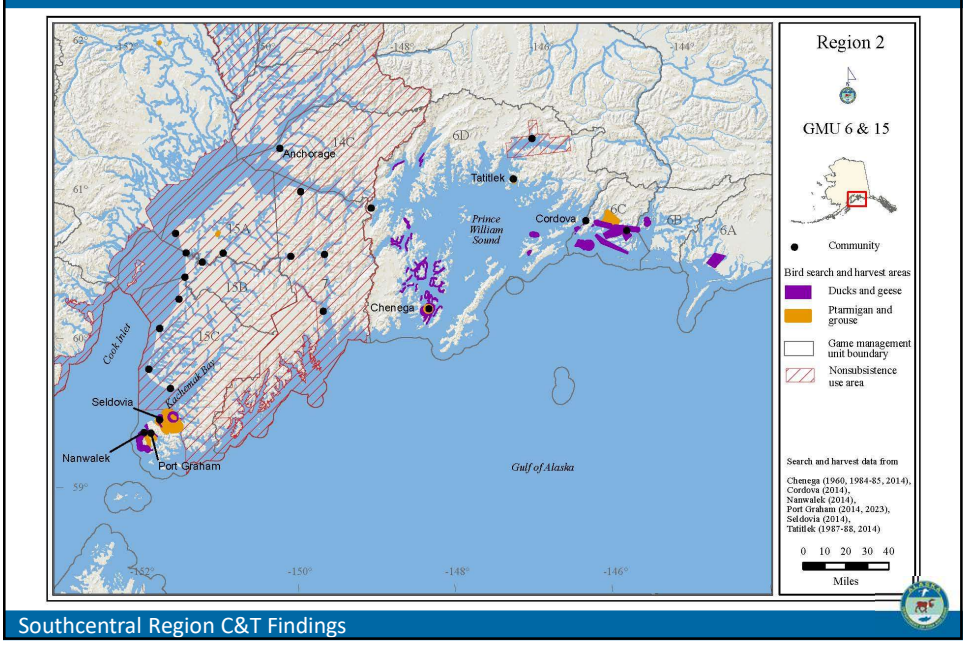
28

### Small Land Mammal Search and Harvest Areas – Units 6, 8, and 15C 29

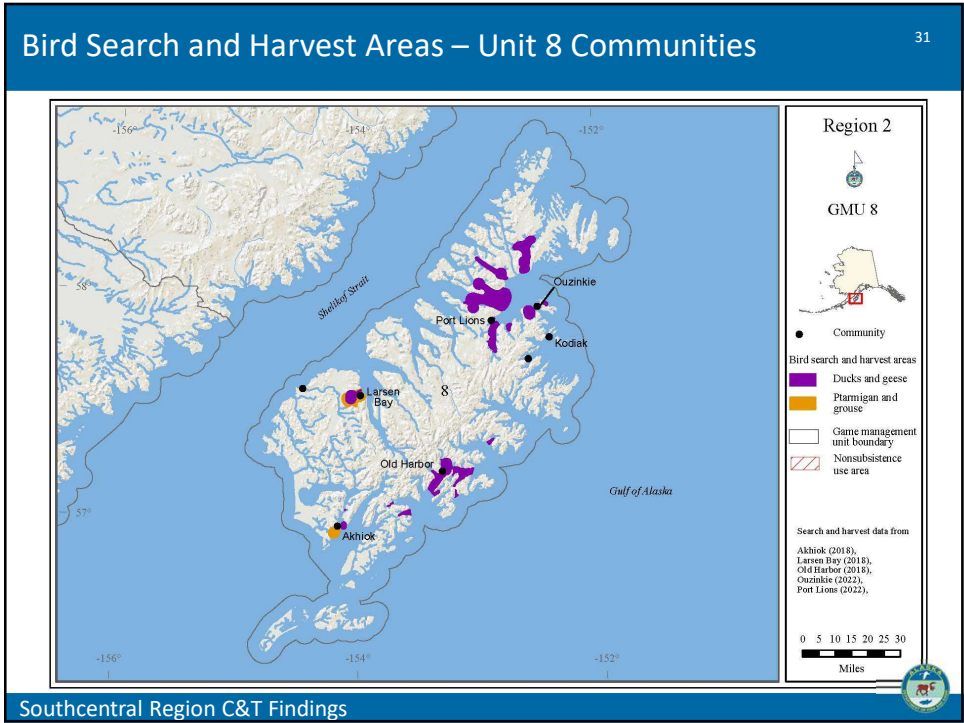


29

### Bird Search and Harvest Areas - Unit 6 and 15C Communities 30



30



31

### Contact Us

32

**Lauren Sill**  
 Southern Region Program Manager  
[lauren.sill@alaska.gov](mailto:lauren.sill@alaska.gov)  
 (907) 465-3617

**Jackie Keating**  
 Southcentral Subsistence Resource Specialist  
[jacqueline.keating@alaska.gov](mailto:jacqueline.keating@alaska.gov)  
 (907) 267-2368

**Community Subsistence Harvest Information System**  
<http://www.adfg.alaska.gov/sb/CSIS/>

**Division Technical Paper Series**  
<http://www.adfg.alaska.gov/sf/publications>

Survey lists in Port Lions, 2023

**Thank you to all the partners, communities, and residents who make our research possible!**

Including: Chugach Regional Resource Commission, Native Village of Eyak, Ouzinkie, Port Lions, Port Graham, and the Kodiak National Wildlife Refuge.

Contact Us

32