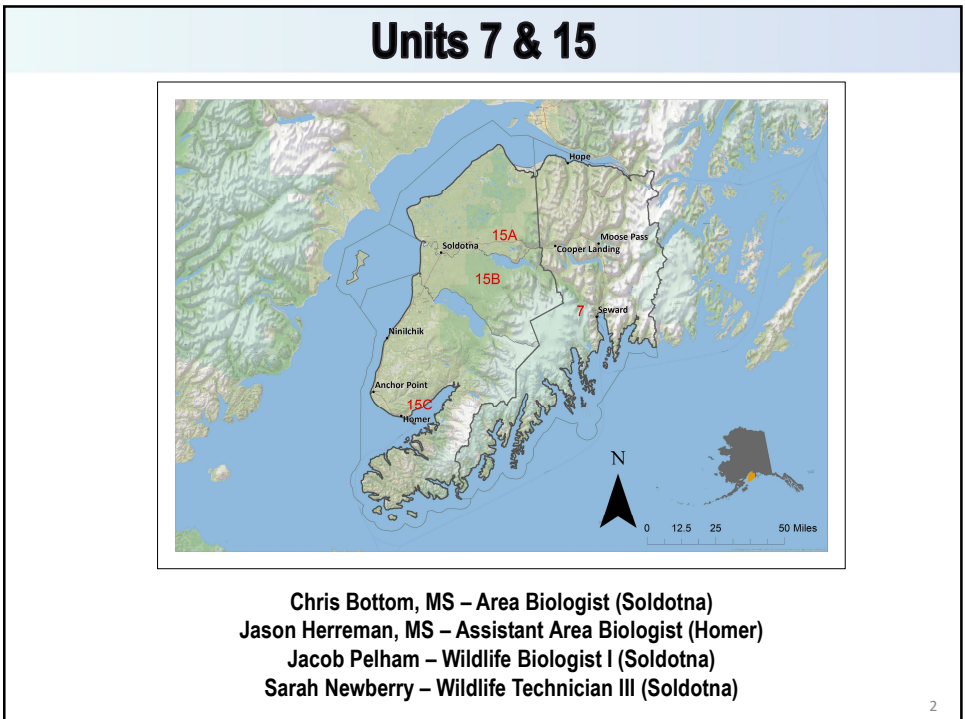


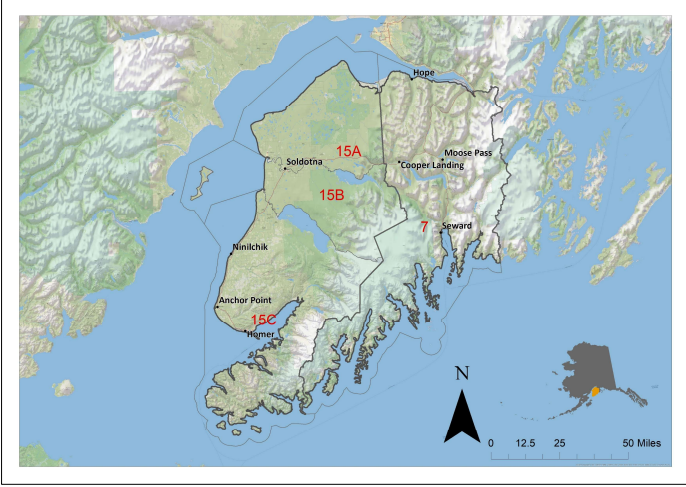


1



2

Units 7 & 15

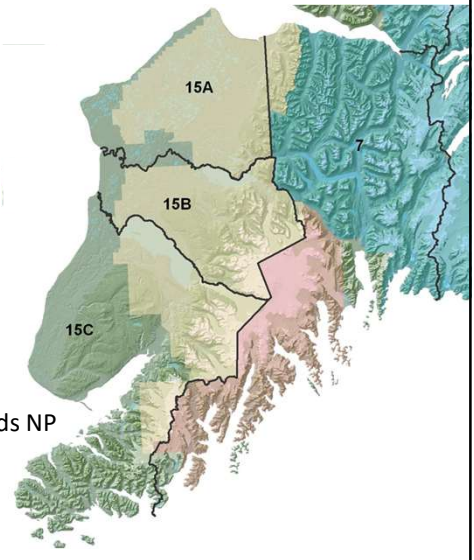


Constance Nicks– Program Technician(Soldotna)
 Katelyn Jordan–Program Technician(Soldotna)
 Nathan McClenning– Program Technician (Homer)

3

Humans and Land Attributes

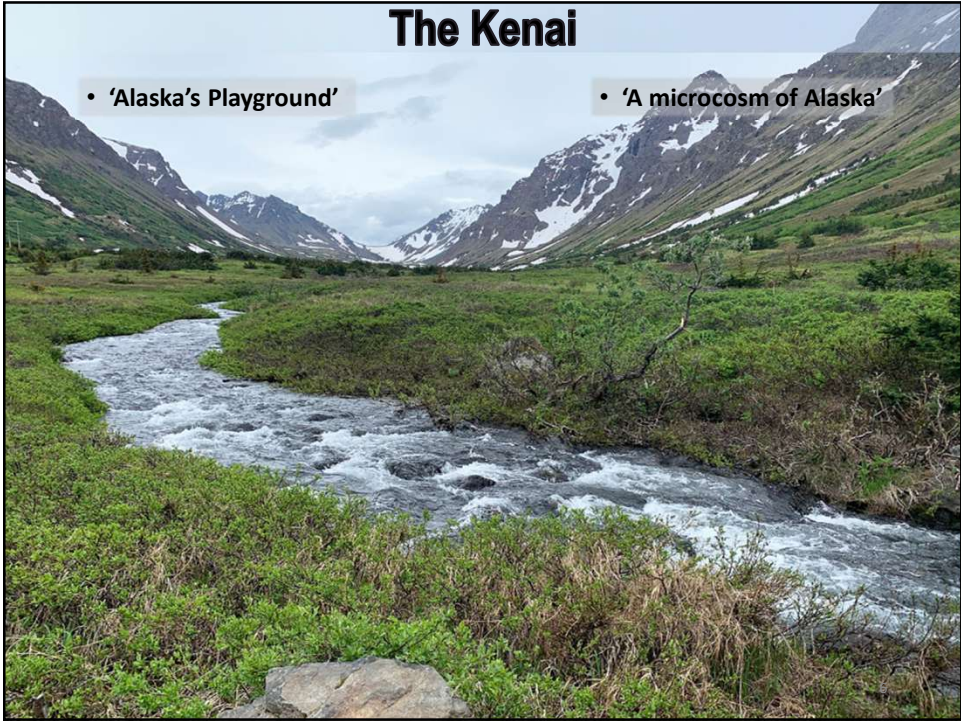
- ADFG Offices in Soldotna & Homer, Moose Research Center
- ~ 60,000 full-time residents
- Summer tourists > 500,000 annually
- ~8,400 mi²
 - 71% Federal
 - 29% State/Borough /Private/Native
 - Kenai NWR, Chugach NF, Kenai Fjords NP
- 6 advisory committees



4



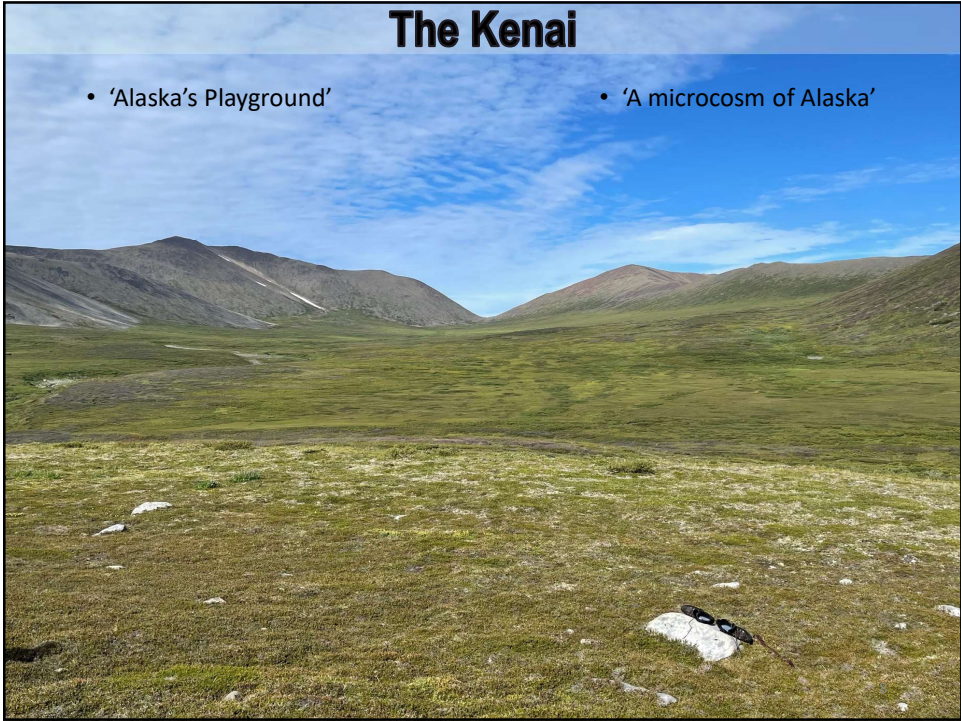
5



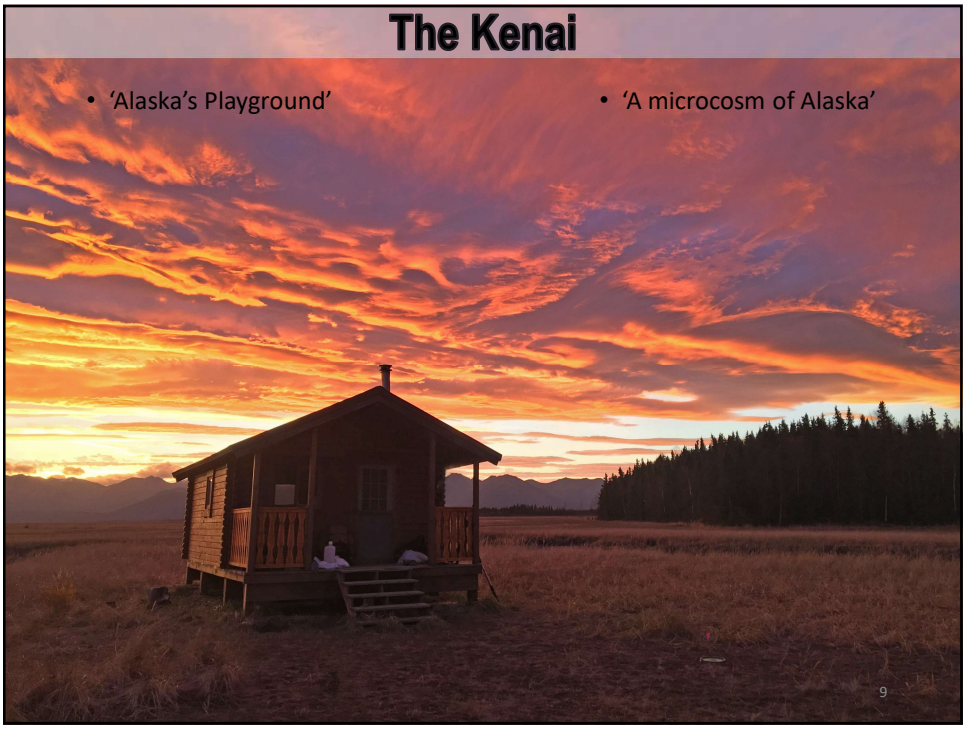
6



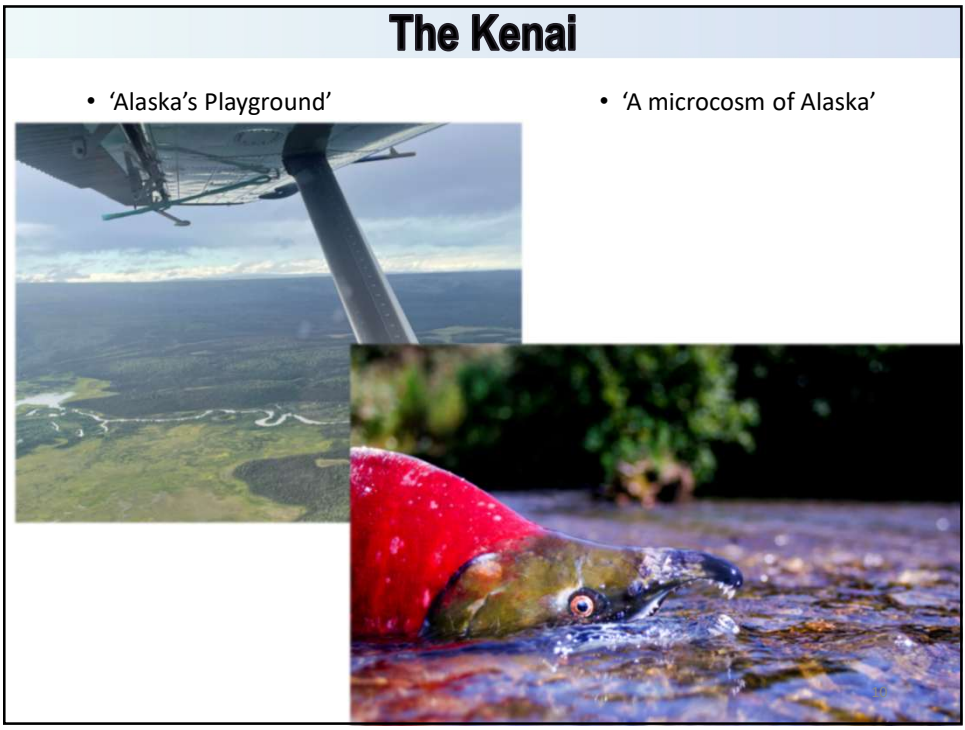
7



8



9



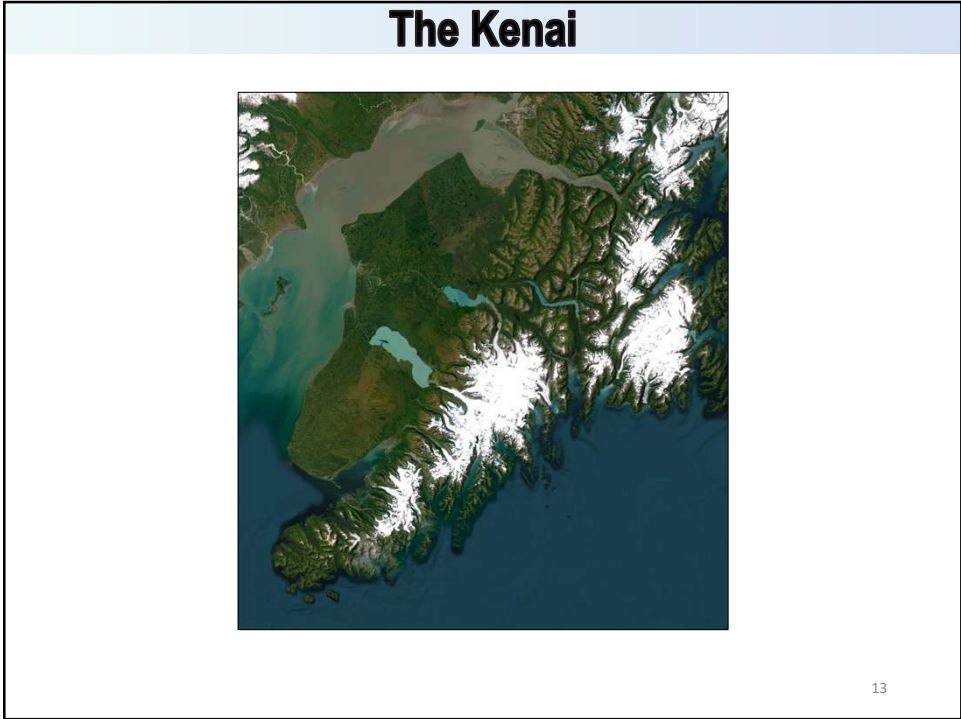
10



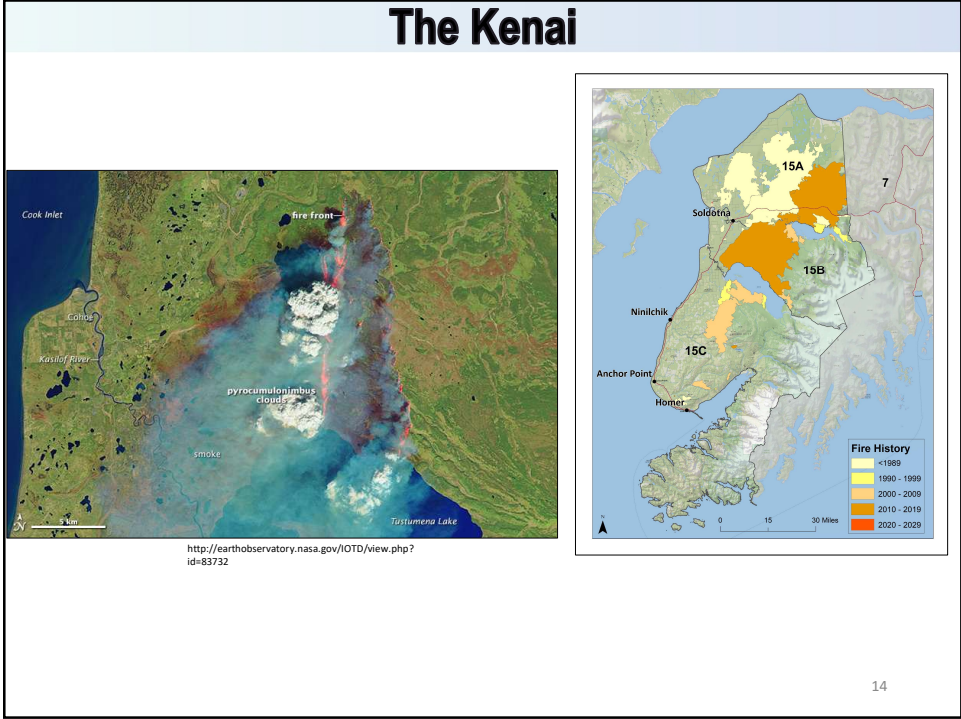
11



12



13



14

Species summaries

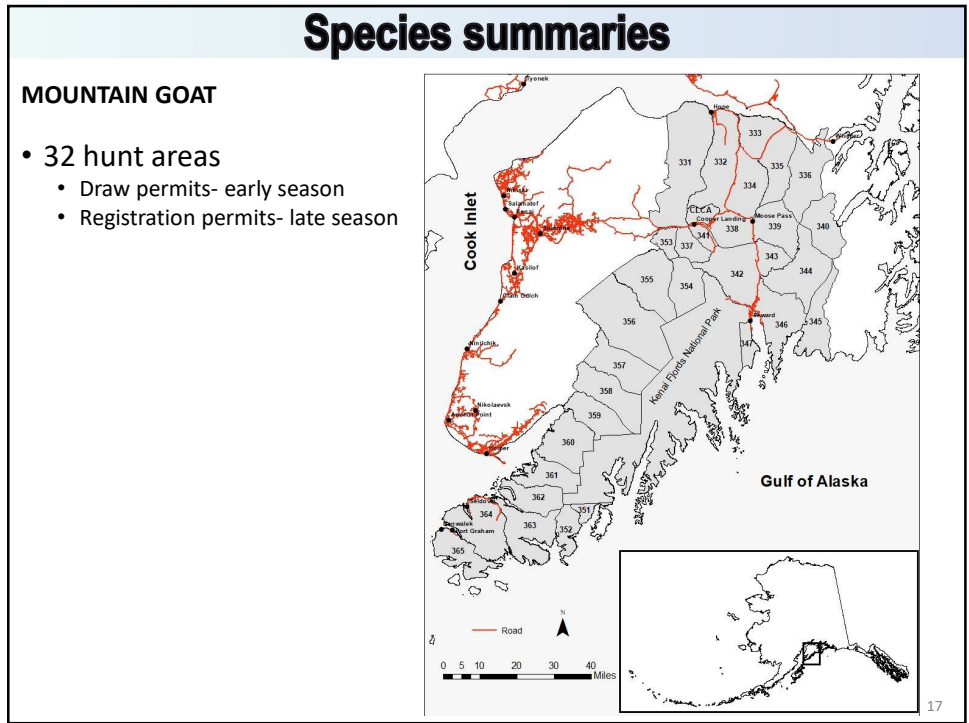
- Species summaries
- Research
- Human-wildlife interactions
- Outreach and education

15

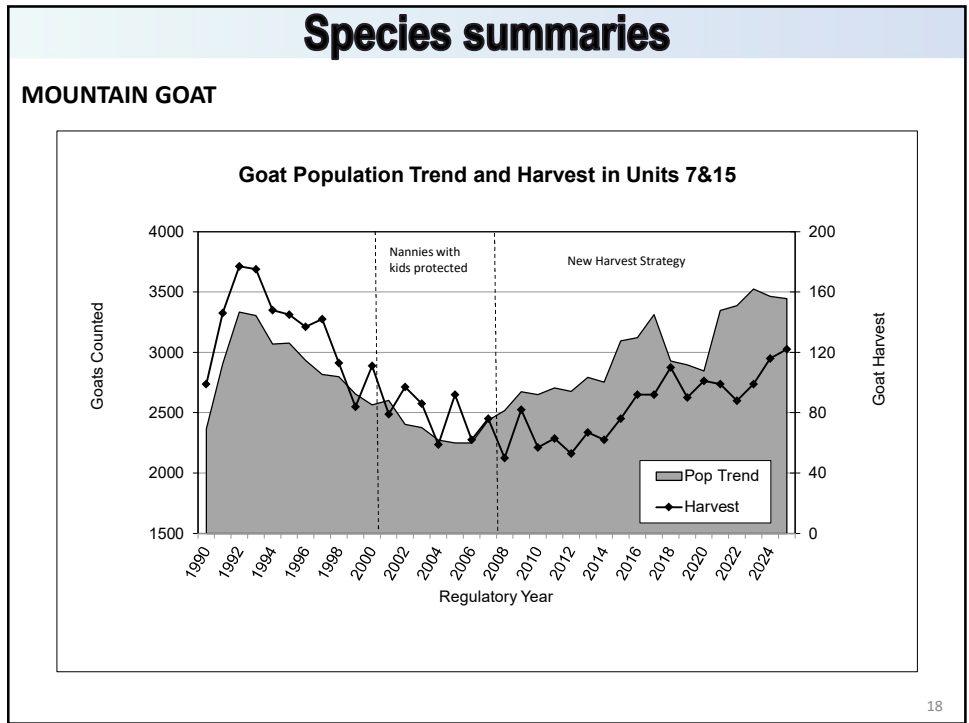
15



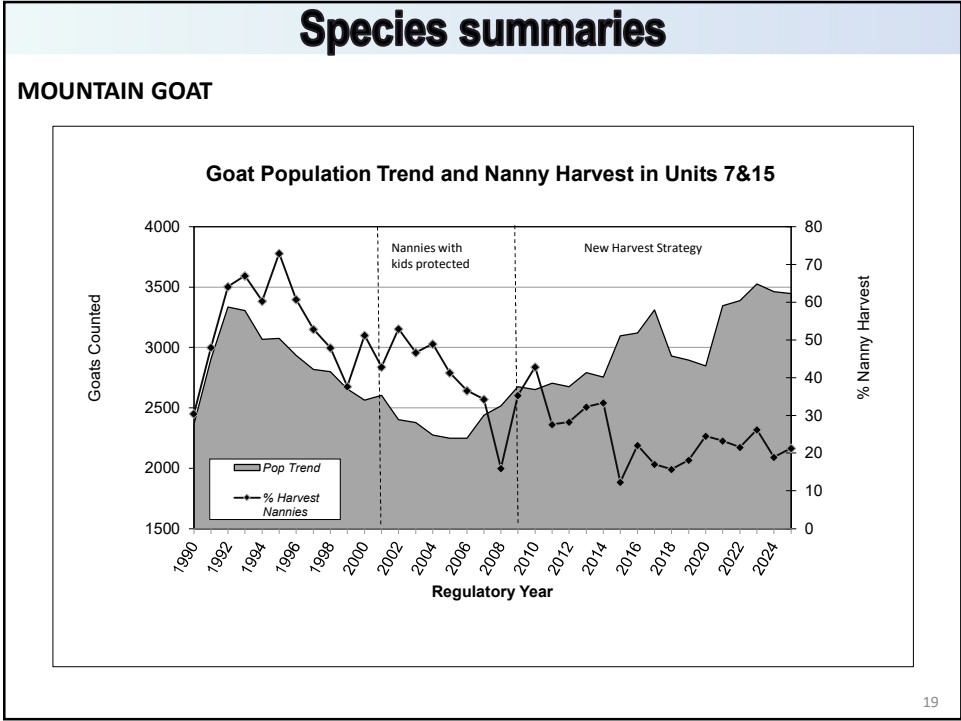
16



17



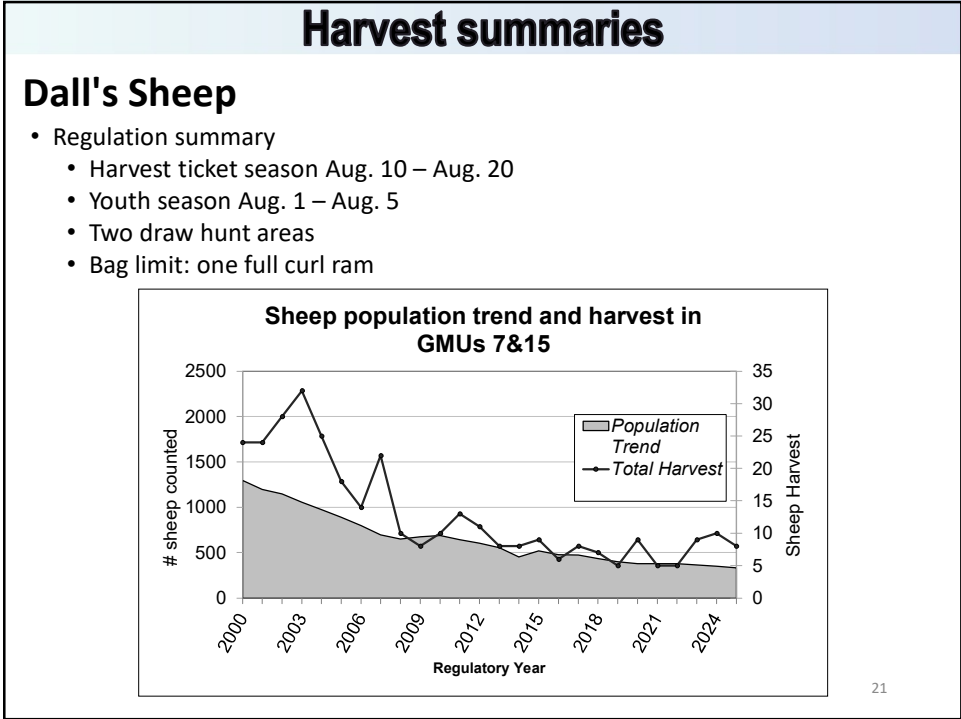
18



19



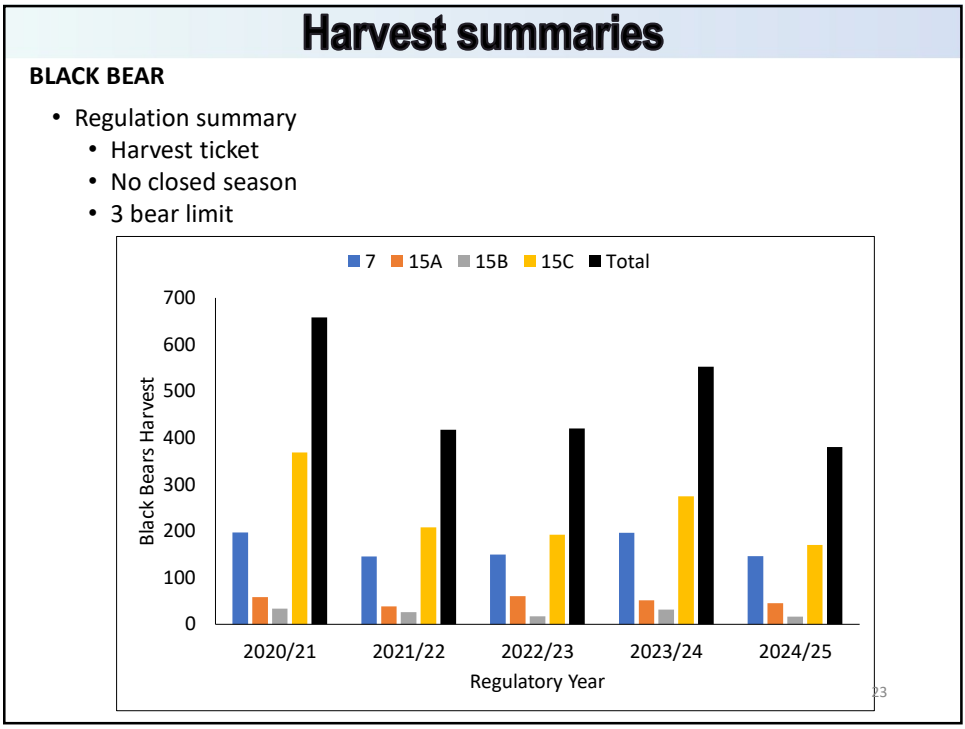
20



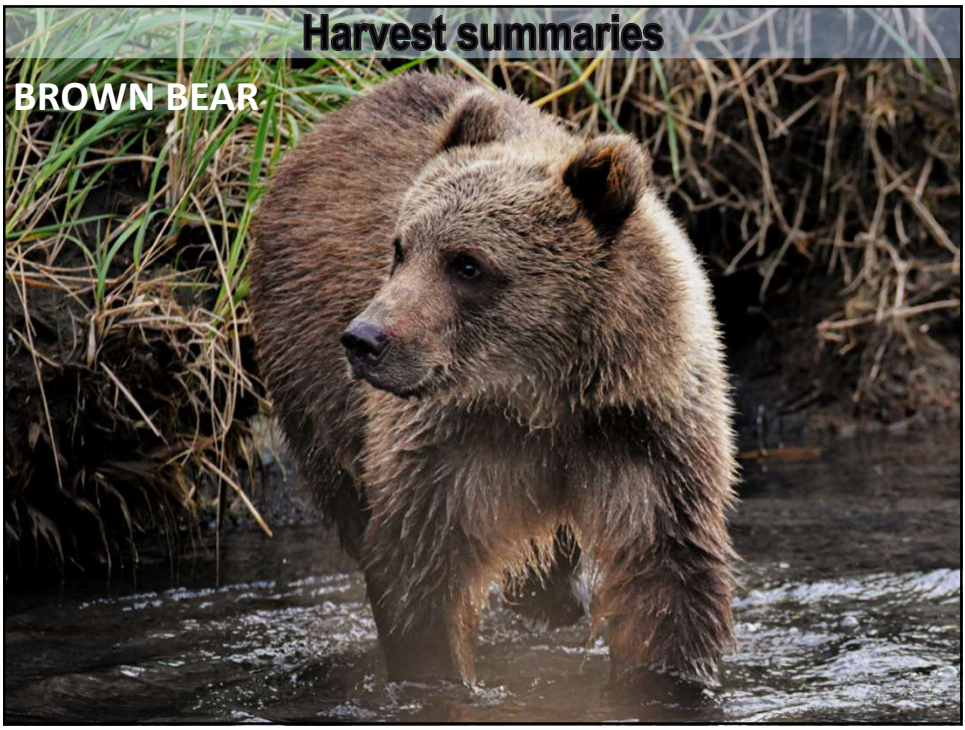
21



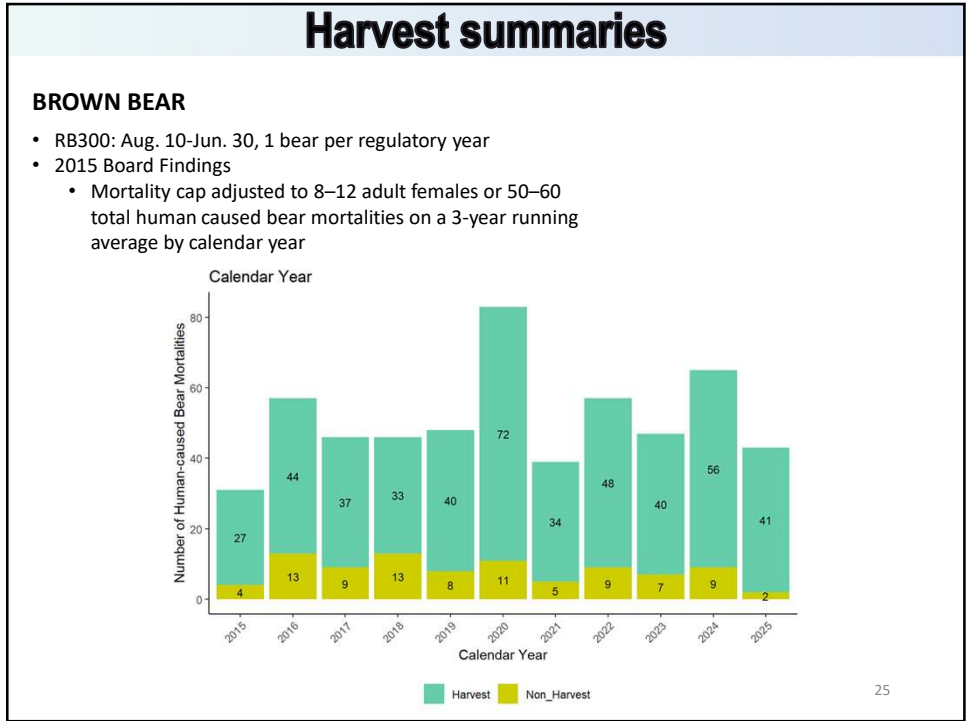
22



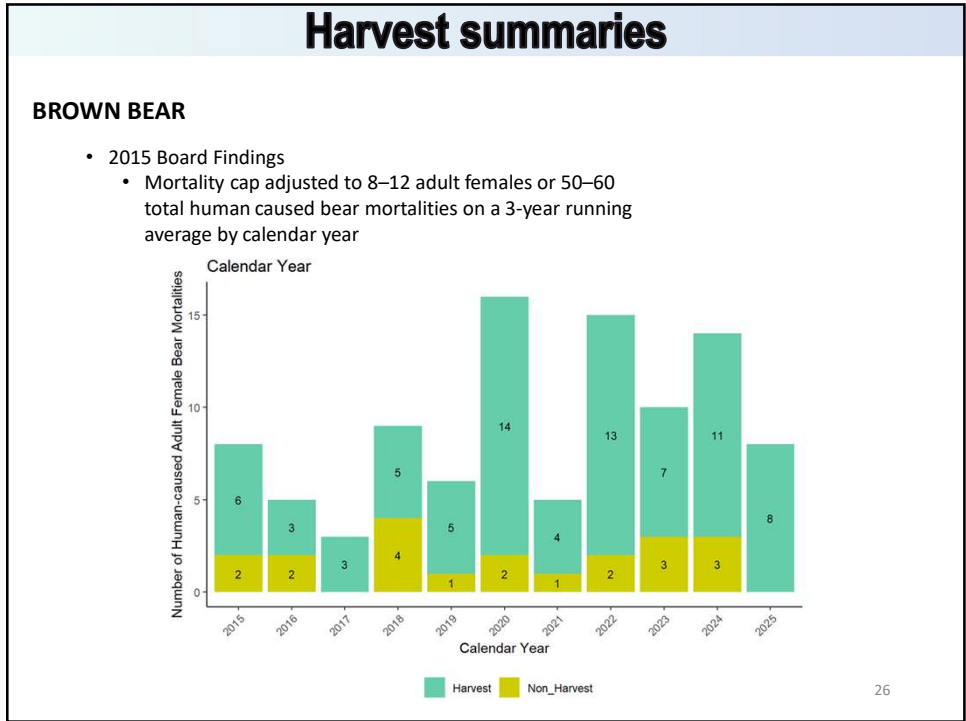
23



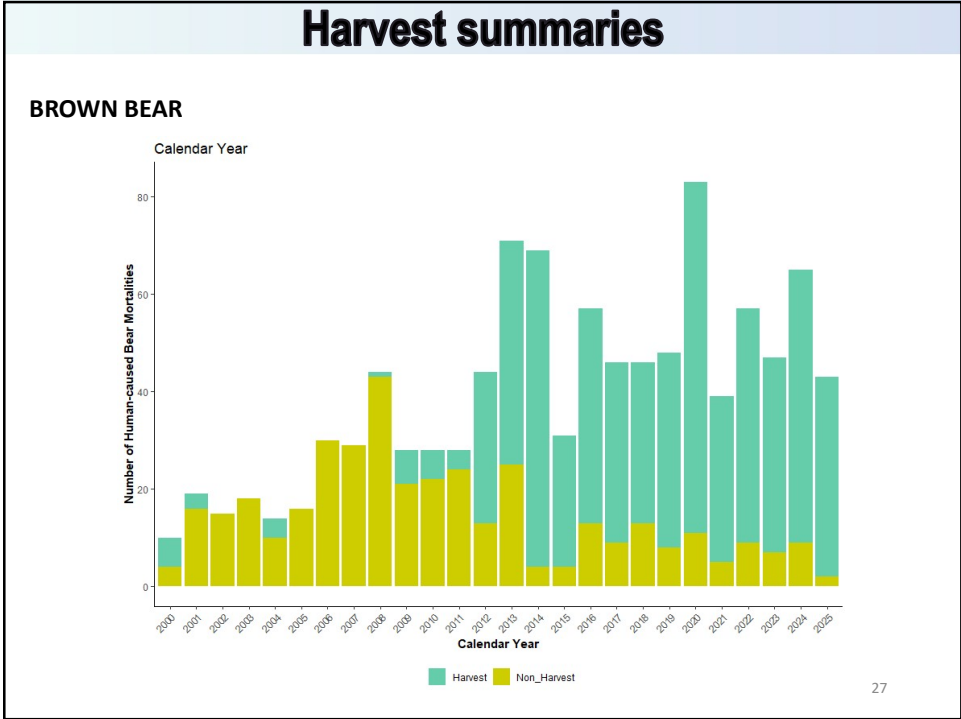
24



25



26



27

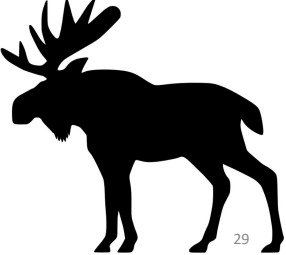


28

Harvest summaries

MOOSE

- Population outlook
 - Unit 07
 - Likely increasing in proximity to Swan Lake Fire, elsewhere unlikely to change without landscape level change
 - Subunit 15A
 - Abundance likely increasing proximity to Swan Lake Fire
 - Unlikely to change with landscape level change in most of the subunit
 - Subunit 15B
 - Likely increasing in response to wildfire
 - Relatively limited access
 - Subunit 15C
 - High hunter and harvest densities
 - At or above IM management objectives
 - Likely increasing to stable

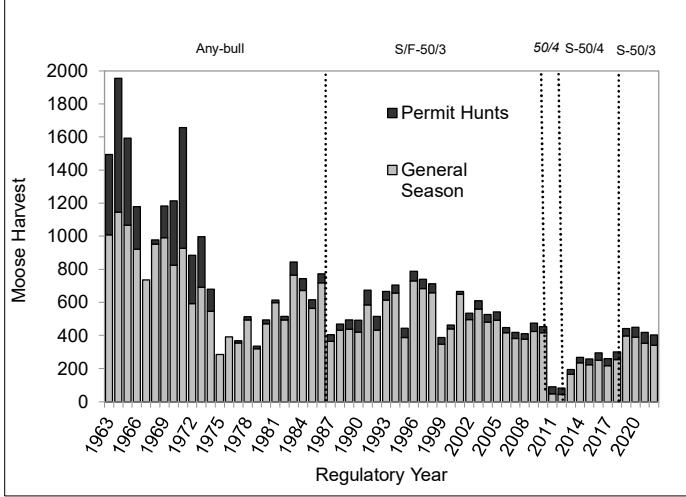


29

Harvest summaries

MOOSE

- Regulations
 - Antler restrictions
 - Sublegal rate ~%10
 - 6 any bull hunts
 - DM549 cow hunt
 - 1 Tier II sub. hunt



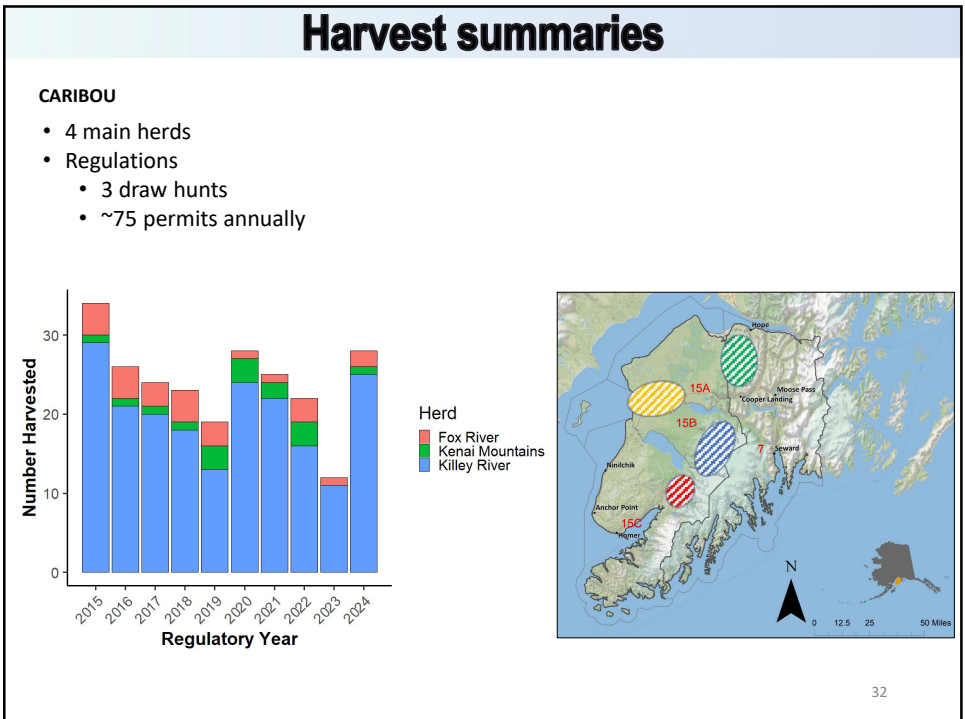
Moose Harvest

Regulatory Year

30



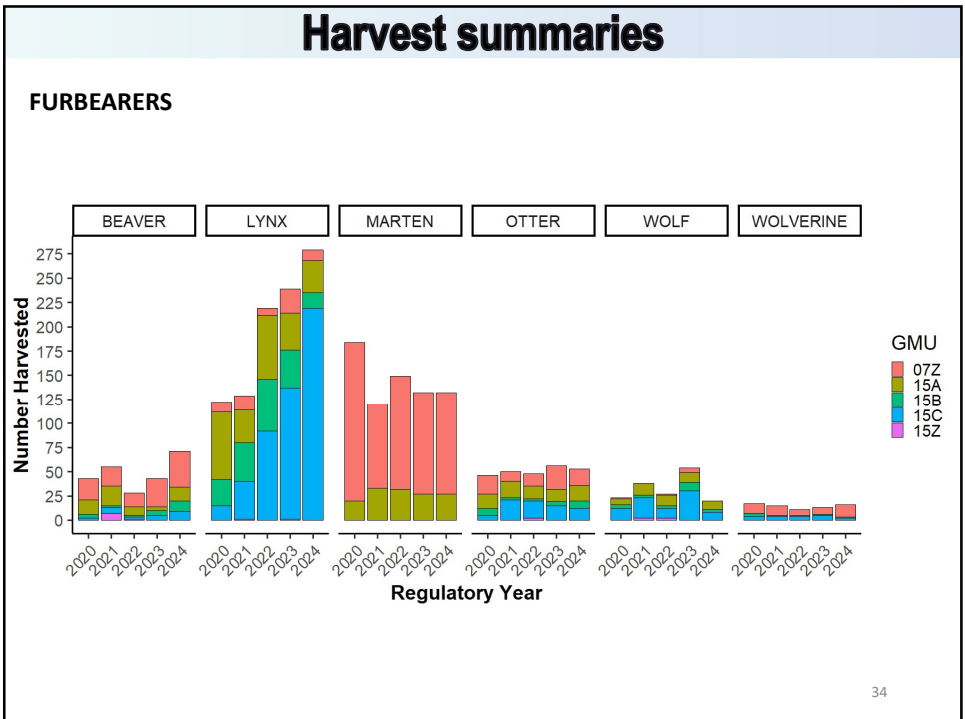
31



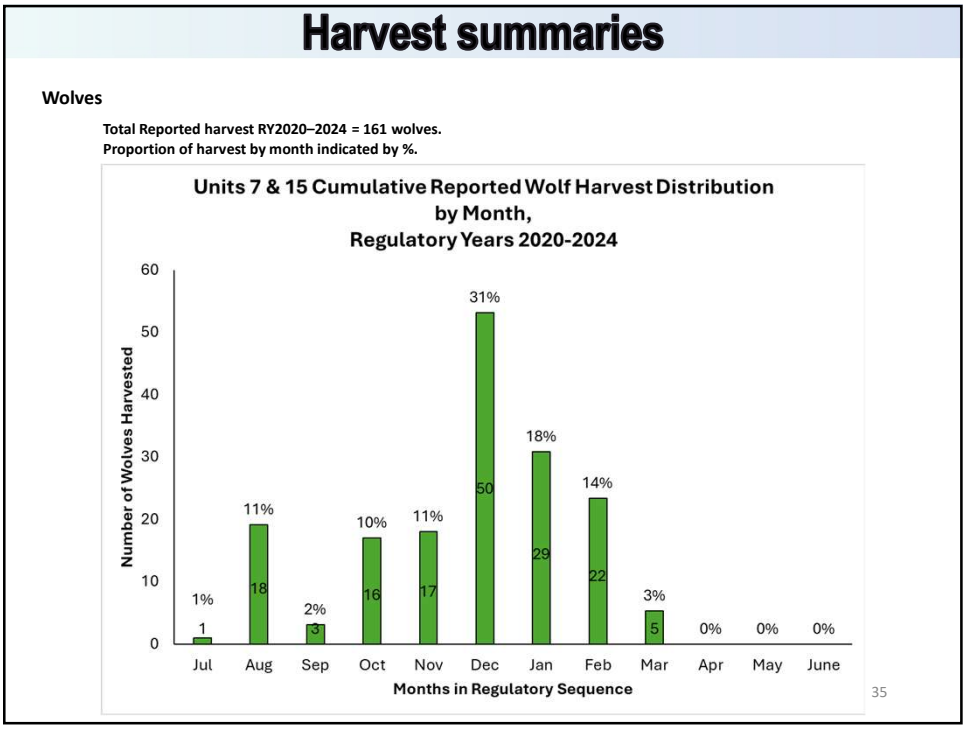
32



33



34



35



36

Human-Wildlife Interactions

- > 1,000 Wildlife incidents reported through the online system alone in 2022-2025
 - 75% related to moose



37

37

Outreach and Education

- Kenai Trappers Association
- North American Versatile Hunting Dogs Assn.
- Trap Safety for Pet Owners Workshops
- Russian River Interagency Meetings
- KNWR Trappers Orientation
- Electric Fence Demonstrations
- Safari Club International
- Local media (KDLL, Peninsula Clarion, Homer News, Seward Journal, KSRM)
- Kenai Peninsula College, Kachemak Bay Campus
- Kenai River Guide Association
- Troop 555 Boy Scouts of America
- Local school groups
- Kachemak Bay State Park
- Homer Soil and Water Conservation District
- Educational permits

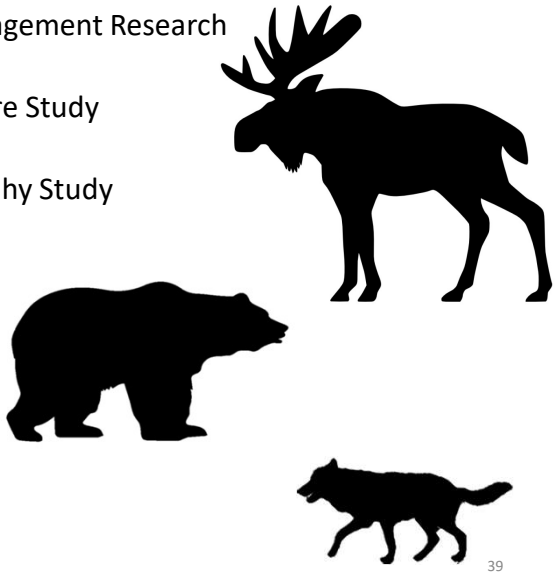


38

38

Research

- Moose Intensive Management Research
- Moose Response to Fire Study
- Brown Bear Demography Study
- Kenai Wolf Research
- Bull Moose Study
- Lynx Starting 2027




39

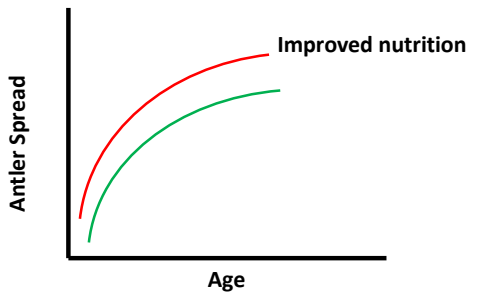
39

Bull Moose Study

ADFG 1974





MOOSE ANTLERS: How Fast Do They Grow?



40

40

Bull Moose Study


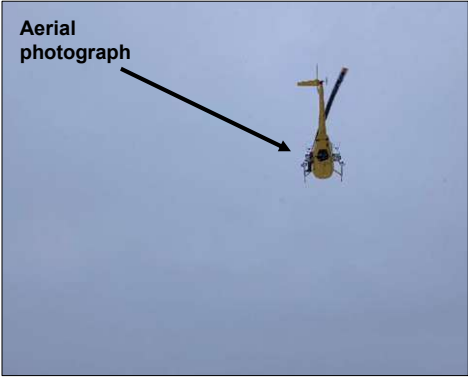


Sealed antler photos ($n = 224$)

41

41

Bull Moose Study



42

42

Bull Moose Study

ALASKA DEPARTMENT OF FISH AND GAME

43

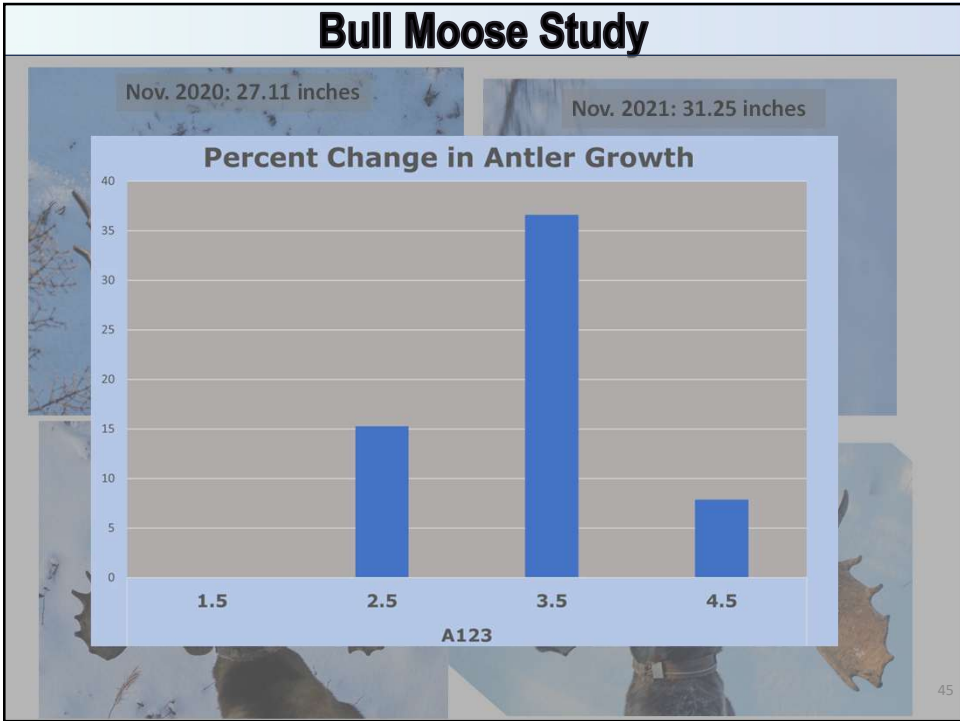
43

Bull Moose Study

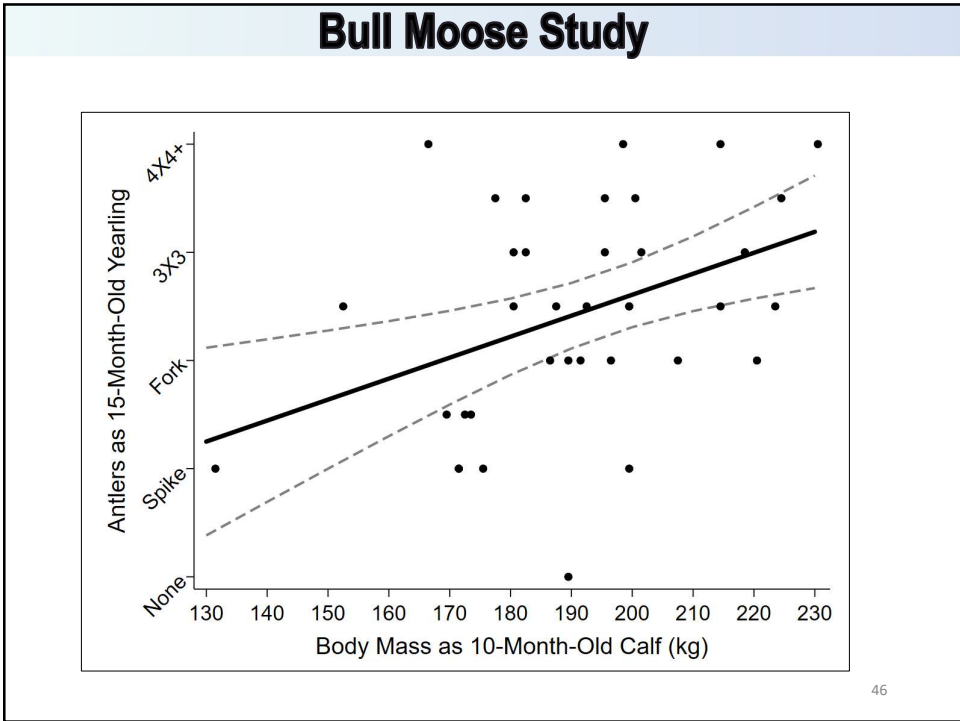
<p>Nov. 2020: 27.11 inches</p>	<p>Nov. 2021: 31.25 inches</p>
<p>Nov. 2022: 42.69 inches</p>	<p>Nov. 2023: 46.05 inches</p>

44

44

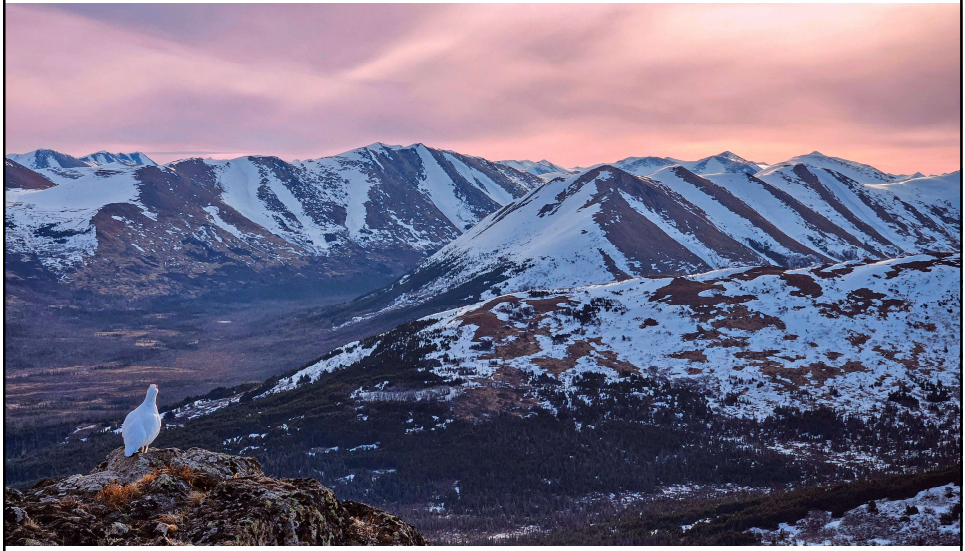


45



46

Questions



47

47